

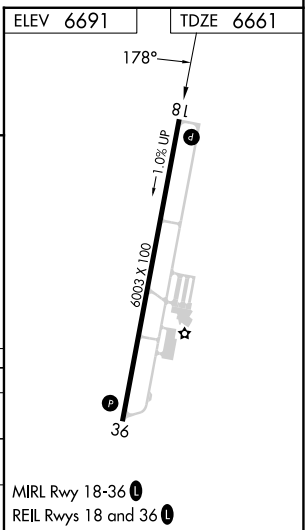
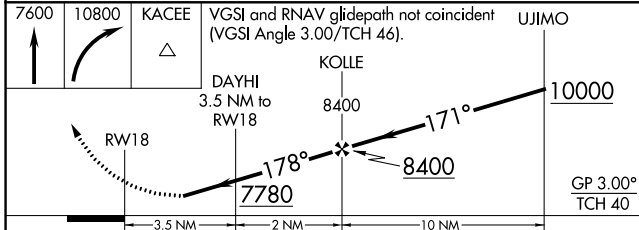
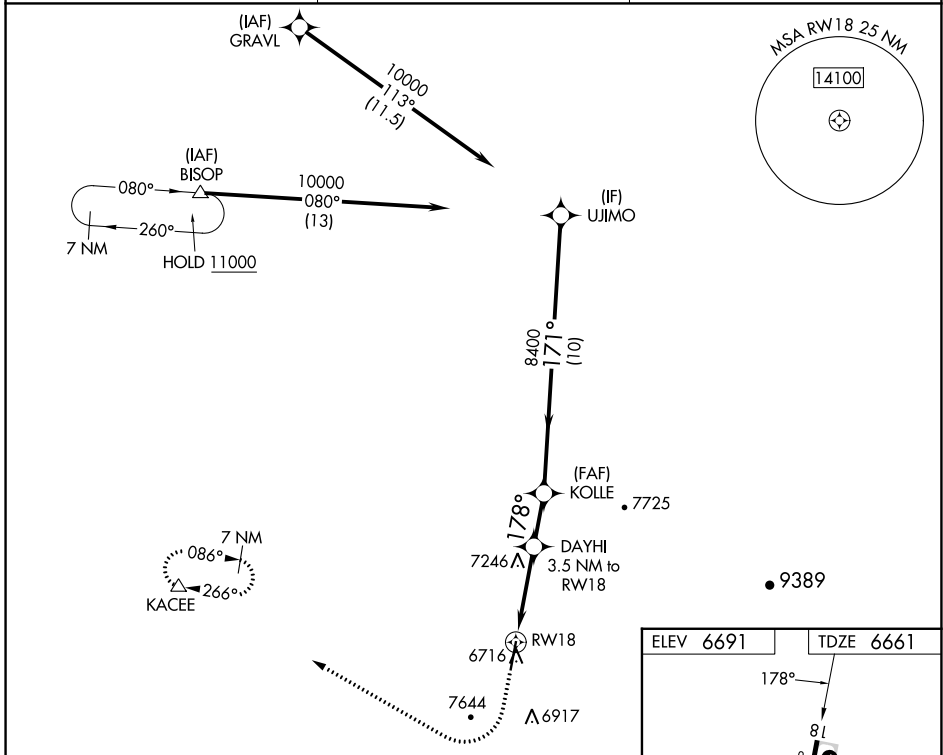
WAAS CH 63043 W18A	APP CRS 178°	Rwy Idg TDZE Apt Elev	6003 6661 6691
--	------------------------	-----------------------------	---

RNAV (GPS) RWY 18

H A CLARK MEML FLD (CMR)

RNP APCH - GPS.	MISSED APPROACH: Climb to 7600, then climbing right turn to 10800 direct KACEE and hold, continue climb-in-hold to 10800.
<p>Procedure NA at night. Rwy 18 helicopter visibility reduction below 1 SM NA. Circling NA east of Rwy 18-36.</p>	

AWOS-3 121.125	ALBUQUERQUE CENTER 128.45 298.9	UNICOM 122.8 (CTAF)
--------------------------	---	-------------------------------



CATEGORY	A	B	C	D
LPV DA	7281-1¼		620 (600-1¼)	
LNAV MDA	7520-1 859 (900-1)	7520-1¼ 859 (900-1¼)	7520-2½	859 (900-2½)
CIRCLING	7520-1¼ 829 (900-1¼)	7540-1¼ 849 (900-1¼)	8020-3	1329 (1400-3)

SW-4, 13 JUN 2024 to 11 JUL 2024

SW-4, 13 JUN 2024 to 11 JUL 2024