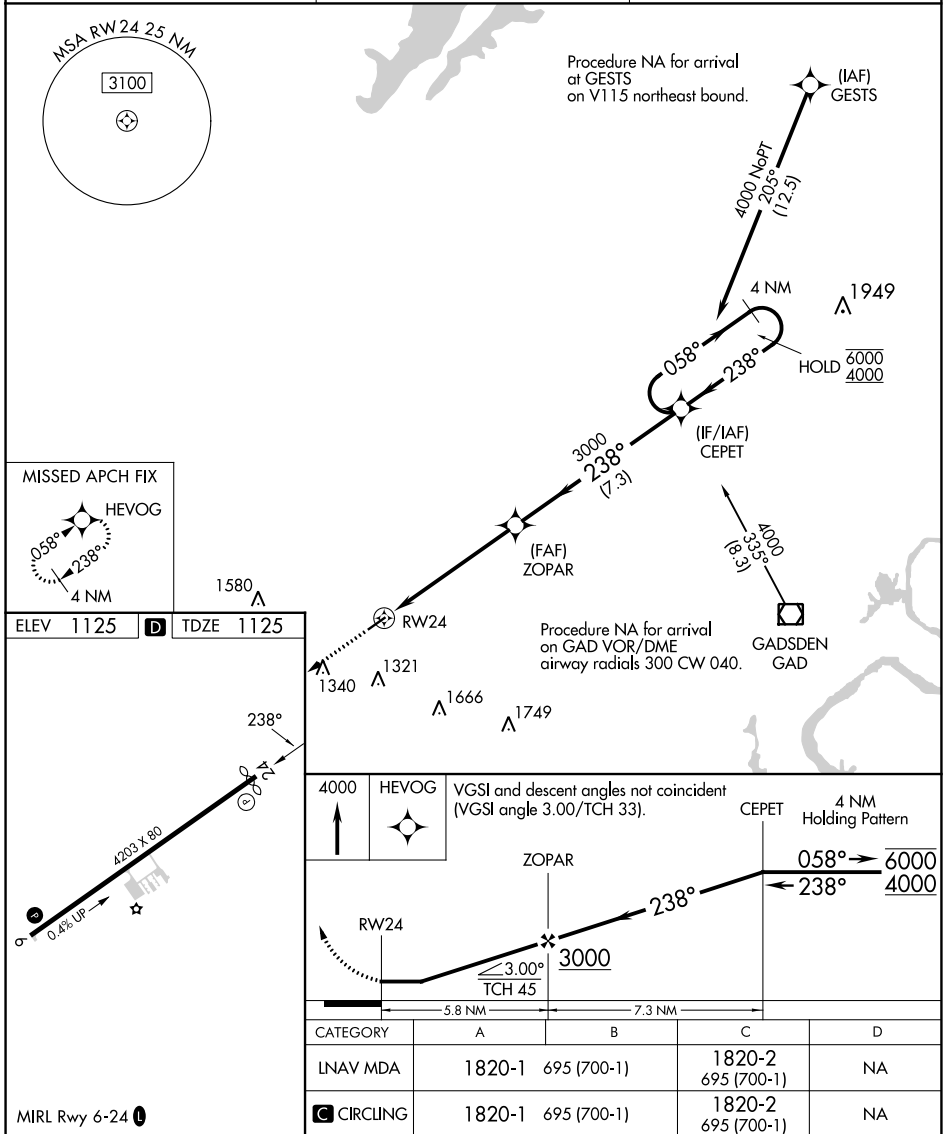


APP CRS	Rwy Idg	<b>4098</b>
<b>238°</b>	TDZE	<b>1125</b>
	Apt Elev	<b>1125</b>

# RNAV (GPS) RWY 24

ROBBINS FLD (20A)

RNP APCH.		MISSED APPROACH: Climb to 4000 direct HEVOG and hold.
<p><b>▼</b> Procedure NA at night. Use Albertville Rgnl/Thomas J Brumlik Fld altimeter setting, when not received, use Northeast Alabama Rgnl altimeter setting and increase all MDA 60 feet and increase LNAV Cat B visibility ¼ SM, Cat C Circling visibility ¼ SM. Rwy 24 helicopter visibility reduction below 1 SM NA.</p>	8A0 AWOS-3PT <b>119.575</b>	BIRMINGHAM APP CON <b>125.45 279.65</b>
		UNICOM <b>122.8 (CTAF)</b>



SE-4, 13 JUN 2024 to 11 JUL 2024

SE-4, 13 JUN 2024 to 11 JUL 2024

MISSED APCH FIX	HEVOG
ELEV 1125	TDZE 1125
<p>RWY 24</p> <p>1340 <math>\Delta</math> 1580 <math>\Delta</math> 1666 <math>\Delta</math> 1749 <math>\Delta</math></p> <p>4000 HEVOG</p> <p>ZOPAR</p> <p>CEPET</p> <p>RWY 24</p> <p>3000</p> <p>5.8 NM 7.3 NM</p>	
CATEGORY	A B C D
LNAV MDA	1820-1 695 (700-1) 1820-2 695 (700-1) NA
CIRCLING	1820-1 695 (700-1) 1820-2 695 (700-1) NA