

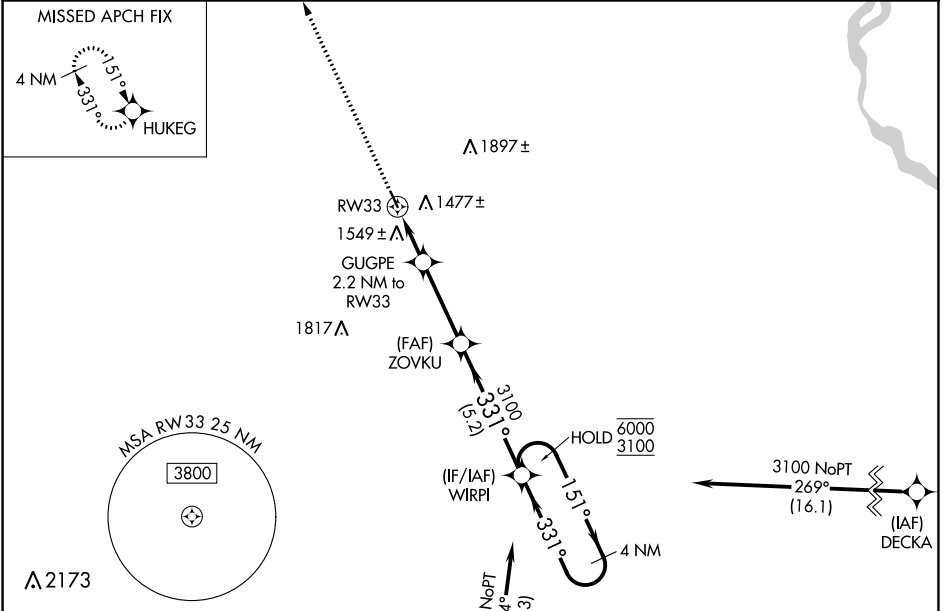
WAAS CH 72627 W33A	APP CRS 331°	Rwy Idg TDZE Apt Elev	3600 1343 1345
--	------------------------	-----------------------------	---

RNAV (GPS) RWY 33

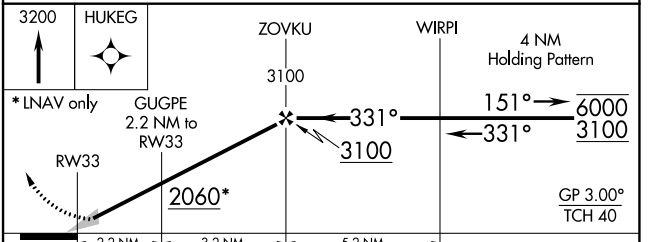
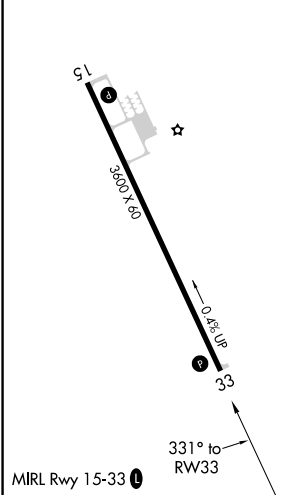
PENDER MUNI (ØC4)

RNP APCH.		MISSED APPROACH: Climb to 3200 direct HUKEG and hold.
<p>▼ Baro-VNAV NA. Use Wayne altimeter setting; when not received, use Sioux City altimeter setting; increase LPV DA to 1681 feet and LNAV/VNAV DA to 1972 feet and all MDAs 60 feet.</p> <p>▲ NA</p>		

LCG AWOS-3 120.125	SIOUX CITY APP CON * 124.6 307.0	CTAF 122.9
------------------------------	--	----------------------



ELEV 1345	TDZE 1343
-----------	-----------



CATEGORY	A	B	C	D
LPV DA	1637-1	294 (300-1)		NA
LNAV/VNAV DA	1928-2	585 (600-2)		NA
LNAV MDA	1860-1	517 (600-1)		NA

NC-2, 13 JUN 2024 to 11 JUL 2024

NC-2, 13 JUN 2024 to 11 JUL 2024