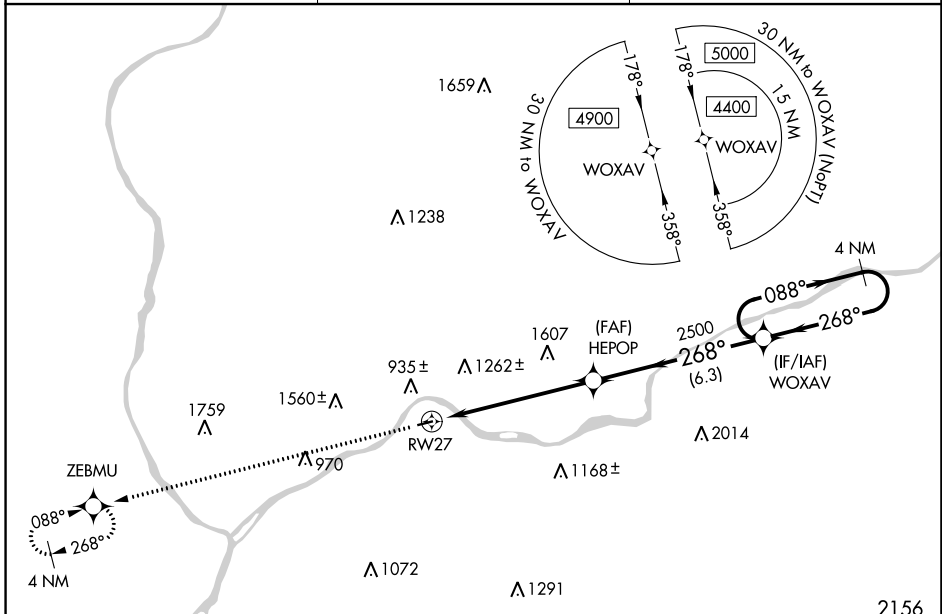


APP CRS	Rwy Idg	3000
268°	TDZE	559
	Apt Elev	559

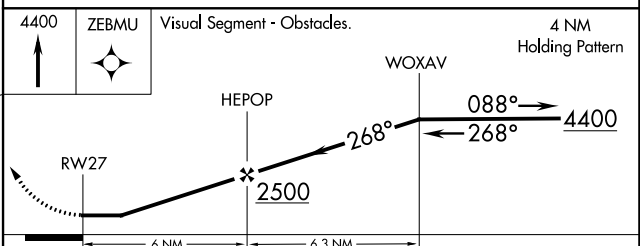
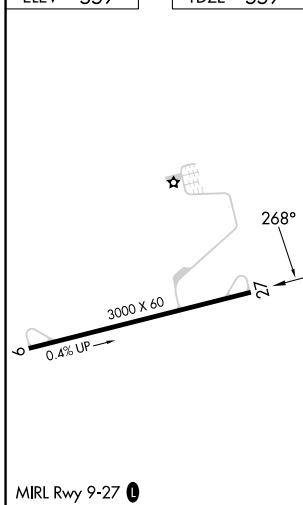
RNAV (GPS) RWY 27

DANVILLE (8N8)

RNP APCH - GPS.		MISSED APPROACH: Climb to 4400 direct ZEBMU and hold, continue climb-in-hold 4400.
▼	Use Williamsport altimeter setting; when not received, procedure NA.	
▲ NA	Procedure NA at night. Rwy 27 helicopter visibility reduction below 1 SM NA.	
IPT ASOS 125.225	WILKES-BARRE APP CON 126.3 256.7	UNICOM 122.8 (CTAF) ①



ELEV 559	TDZE 559
----------	----------



CATEGORY	A	B	C	D
LNAV MDA	1540-1¼ 981 (1000-1¼)	1540-1½ 981 (1000-1½)	NA	

NE-4, 13 JUN 2024 to 11 JUL 2024

NE-4, 13 JUN 2024 to 11 JUL 2024

MIRL Rwy 9-27 ①