

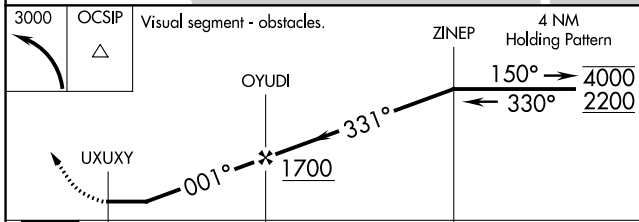
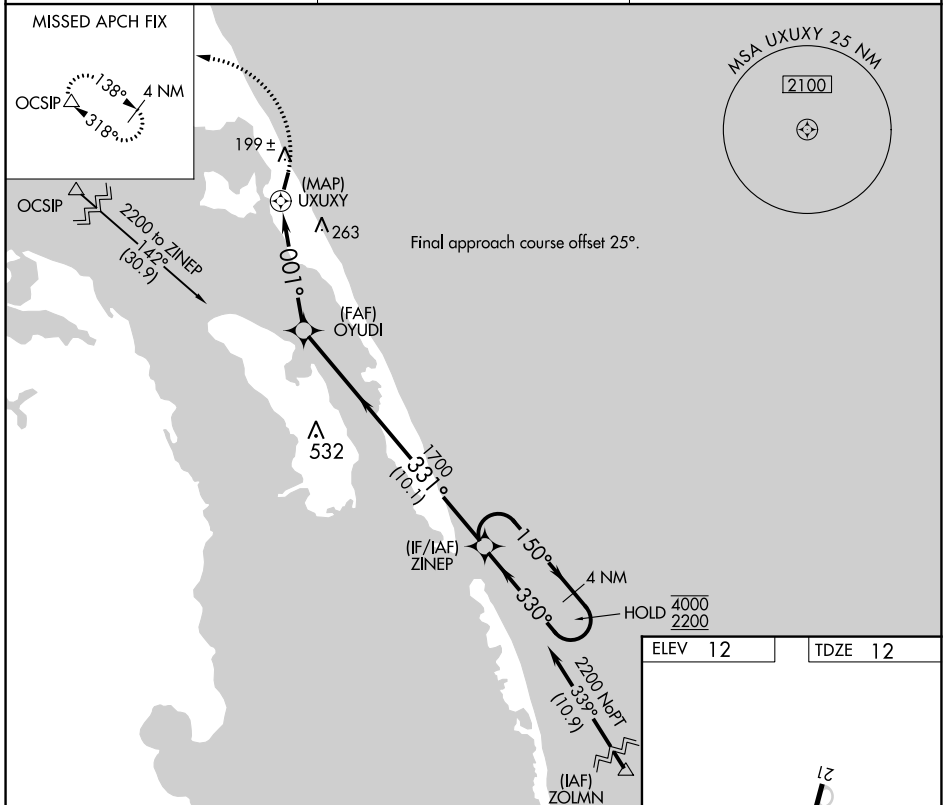
APP CRS	Rwy Idg	3000
001°	TDZE	12
	Apt Elev	12

RNAV (GPS) RWY 3

FIRST FLIGHT (F'FA)

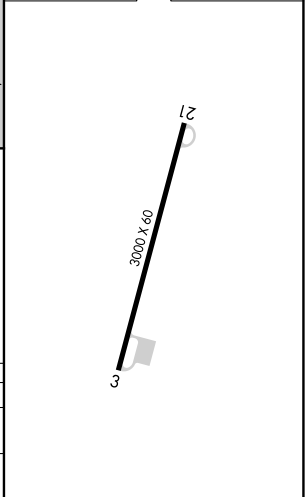
RNP APCH - GPS.	MISSED APPROACH: Climbing left turn to 3000 direct OCSIP and hold.
▼ Procedure NA at night.	
▲ Rwy 3 helicopter visibility reduction below 1 SM NA.	

AWOS-3 118.075	CHERRY POINT APP CON 124.725 350.35	CTAF 122.9
--------------------------	---	----------------------



CATEGORY	A	B	C	D
LNAV MDA	480-1	468 (500-1)		NA
CIRCLING	520-1 508 (600-1)	540-1 528 (600-1)		NA

ELEV 12	TDZE 12
---------	---------



SE-2, 13 JUN 2024 to 11 JUL 2024

SE-2, 13 JUN 2024 to 11 JUL 2024