

WAAS CH 72844 W35A	APP CRS 353°	Rwy Idg TDZE Apt Elev	4500 1621 1633
--	------------------------	-----------------------------	---

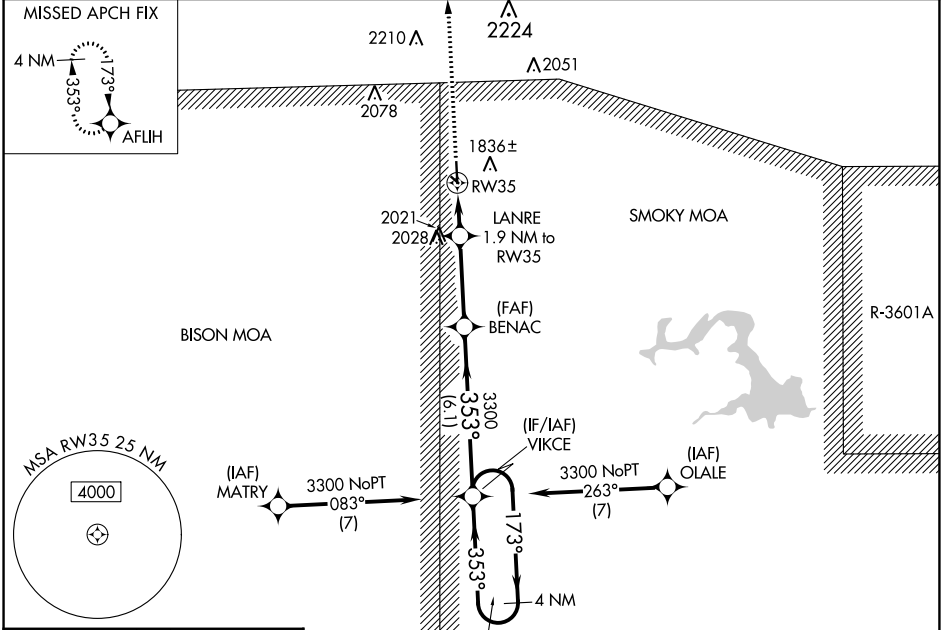
RNAV (GPS) RWY 35

ELLSWORTH MUNI (9K7)

RNP APCH - GPS.

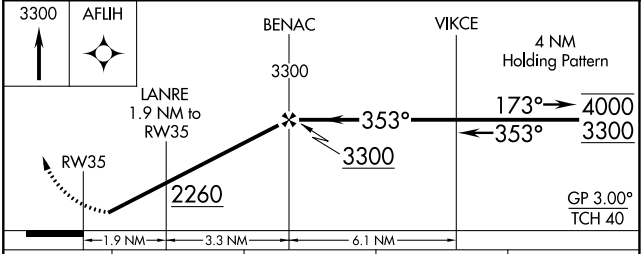
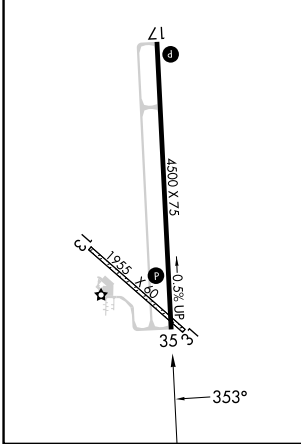
MISSED APPROACH: Climb to 3300 direct AFUHI and hold.

AWOS-3PT 119.675	KANSAS CITY CENTER 134.9 363.2	UNICOM 122.7 (CTAF) 0
----------------------------	--	---------------------------------



ELEV 1633	TDZE 1621
-----------	-----------

MIRL Rwy 17-35 **1**
REIL Rwy 17 and 35 **1**



CATEGORY	A	B	C	D
LPV DA	1871-1 250 (300-1)			NA
LNAV/VNAV DA	2094-1 $\frac{3}{8}$ 473 (500-1 $\frac{3}{8}$)			NA
LNAV MDA	2160-1	539 (600-1)	2160-1 $\frac{1}{2}$ 539 (600-1 $\frac{1}{2}$)	NA
C CIRCLING	2200-1	567 (600-1)	2540-2 $\frac{3}{4}$ 907 (1000-2 $\frac{3}{4}$)	NA

NC-2, 13 JUN 2024 to 11 JUL 2024

NC-2, 13 JUN 2024 to 11 JUL 2024