

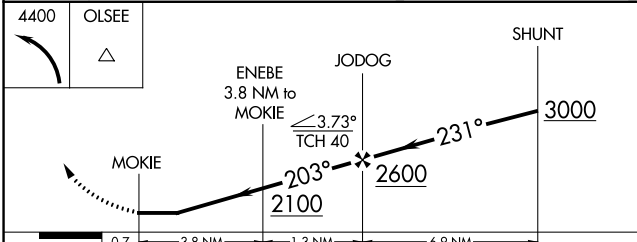
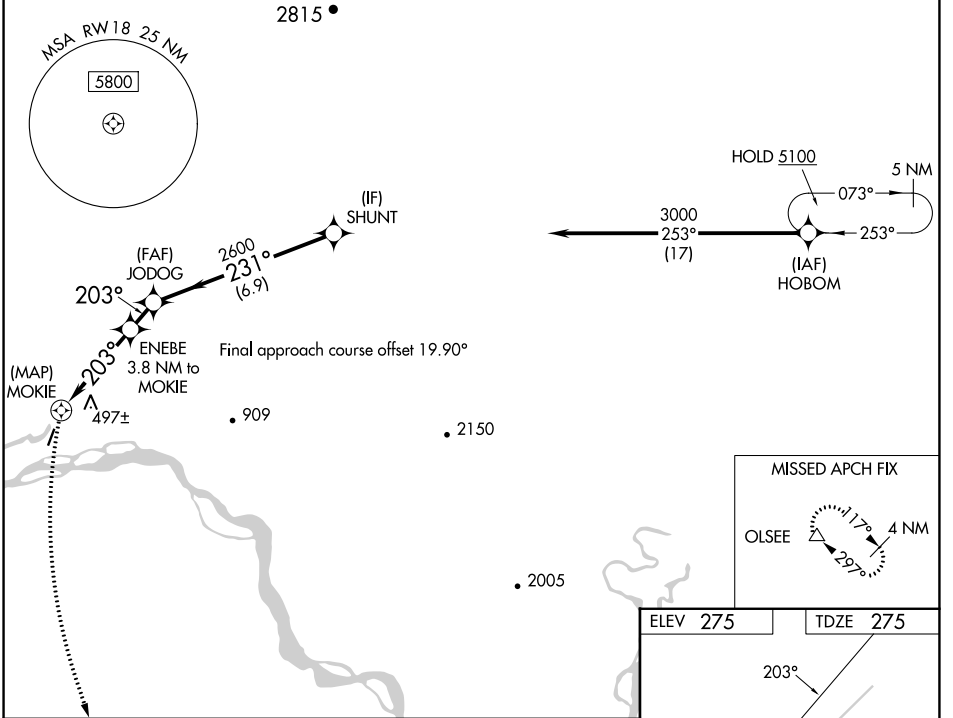
WAAS CH 69541 W18A	APP CRS 203°	Rwy Idg TDZE Apt Elev	3400 275 275
--	------------------------	-----------------------------	---

RNAV (GPS) RWY 18

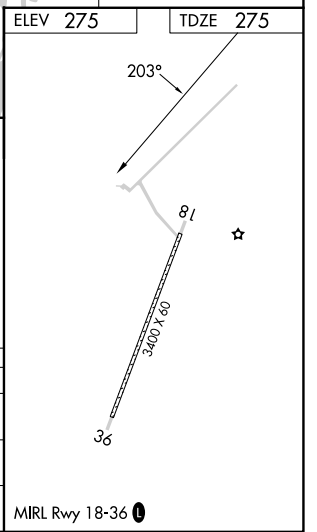
MANLEY HOT SPRINGS (MLY)(P.A.M.L)

RNP APCH.	<p>When Tanana altimeter setting not received, procedure NA.</p> <p>⚠ NA Circling NA west of Rwy 18-36. Rwy 18 helicopter visibility reduction below 1 SM NA. Procedure NA at night.</p> <p>⚠ -22°C</p>	<p>MISSED APPROACH: Climbing left turn to 4400 direct OLSEE and hold.</p>
-----------	---	---

TAL/PATA ASOS 135.1	ANCHORAGE CENTER 120.9 319.2	FAIRBANKS RADIO 122.3 122.65	UNICOM 122.8(CTAF) 0
-------------------------------	--	--	--------------------------------



	0.7	3.8 NM	1.3 NM	6.9 NM	
CATEGORY	A	B	C	D	
LP MDA	1860-1¼ 1585 (1600-1¼)	1860-1½ 1585 (1600-1½)	1860-3 1585 (1600-3)	NA	
LNAV MDA	1960-1¼ 1685 (1700-1¼)	1960-1½ 1685 (1700-1½)	1960-3 1685 (1700-3)	NA	
Ⓢ CIRCLING	1960-1¼ 1685 (1700-1¼)	1960-1½ 1685 (1700-1½)	1960-3 1685 (1700-3)	NA	



AK, 16 MAY 2024 to 11 JUL 2024

AK, 16 MAY 2024 to 11 JUL 2024