

WAAS CH <b>65839</b> <b>W03A</b>	APP CRS <b>034°</b>	Rwy Idg TDZE Apt Elev	<b>5021</b> <b>5503</b> <b>5516</b>
--	------------------------	-----------------------------	---

# RNAV (GPS) RWY 3

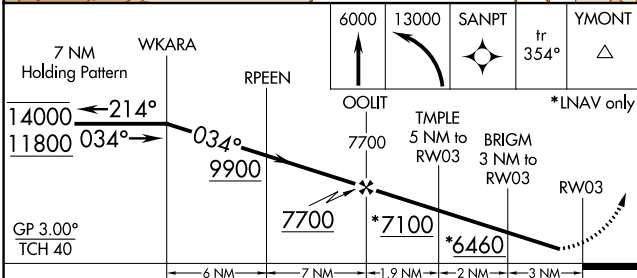
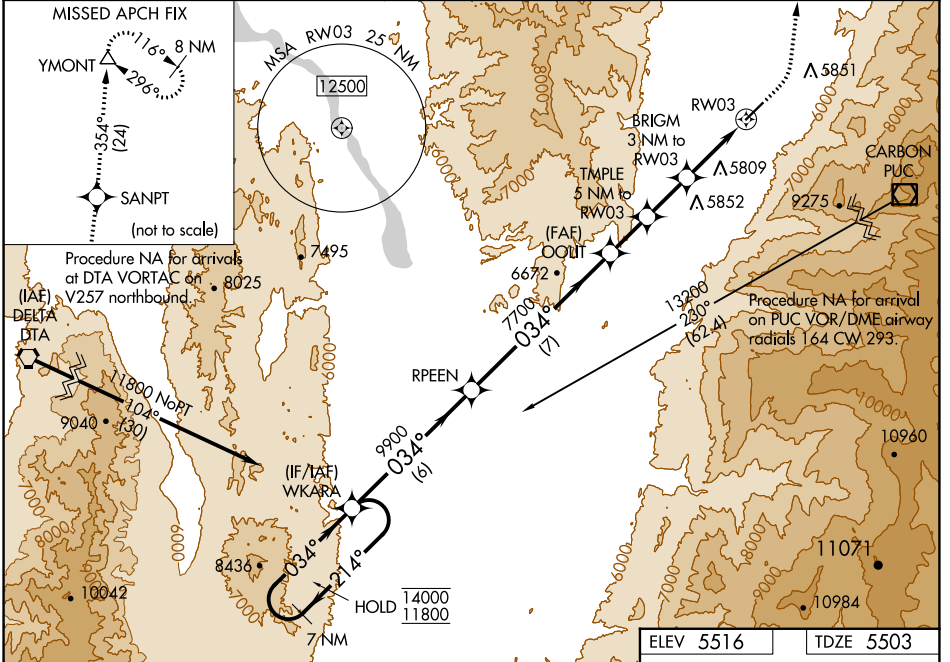
MANTI-EPHRAIM (41U)

RNP APCH.

**NA** Circling NA southeast of Rwy 3-21. Procedure NA at night. Rwy 3 helicopter visibility reduction below 1 SM NA. For uncompensated Baro-VNAV systems, LNAV/VNAV NA below -25°C or above 54°C. When local altimeter setting not received, procedure NA.

MISSED APPROACH: Climb to 6000 then climbing left turn to 13000 direct SANPT and on track 354° direct YMONT and hold.

AWOS-3PT <b>120.025</b>	SALT LAKE CENTER <b>133.6 296.25</b>	UNICOM <b>122.8 (CTAF) 0</b>
----------------------------	---	---------------------------------



ELEV 5516	TDZE 5503																									
<p>7 NM Holding Pattern WKARA</p> <p>RPEEN</p> <p>OOLIT</p> <p>7700</p> <p>7700</p> <p>7100</p> <p>6460</p> <p>6000</p> <p>13000</p> <p>SANPT</p> <p>YMONT</p> <p>tr 354°</p> <p>*LNAV only</p>																										
<table border="1"> <thead> <tr> <th>CATEGORY</th> <th>A</th> <th>B</th> <th>C</th> <th>D</th> </tr> </thead> <tbody> <tr> <td>LPV DA</td> <td colspan="4">5781-1 278 (300-1)</td> </tr> <tr> <td>LNAV/VNAV DA</td> <td colspan="3">5823-1½ 320 (400-1½)</td> <td>NA</td> </tr> <tr> <td>LNAV MDA</td> <td colspan="2">6000-1 497 (500-1)</td> <td>6180-1½ 677 (700-1½)</td> <td></td> </tr> <tr> <td><b>C</b> CIRCLING</td> <td colspan="2">6000-1 484 (500-1)</td> <td>6280-2¼ 764 (800-2¼)</td> <td>7620-3 2104 (2200-3)</td> </tr> </tbody> </table>	CATEGORY	A	B	C	D	LPV DA	5781-1 278 (300-1)				LNAV/VNAV DA	5823-1½ 320 (400-1½)			NA	LNAV MDA	6000-1 497 (500-1)		6180-1½ 677 (700-1½)		<b>C</b> CIRCLING	6000-1 484 (500-1)		6280-2¼ 764 (800-2¼)	7620-3 2104 (2200-3)	<p>0.8% UP</p> <p>034° to RWY 3</p>
CATEGORY	A	B	C	D																						
LPV DA	5781-1 278 (300-1)																									
LNAV/VNAV DA	5823-1½ 320 (400-1½)			NA																						
LNAV MDA	6000-1 497 (500-1)		6180-1½ 677 (700-1½)																							
<b>C</b> CIRCLING	6000-1 484 (500-1)		6280-2¼ 764 (800-2¼)	7620-3 2104 (2200-3)																						

SW-4, 13 JUN 2024 to 11 JUL 2024

SW-4, 13 JUN 2024 to 11 JUL 2024

MIRL Rwy 3-21  
REIL Rwys 3 and 21