

(YMONT1.YMONT) 17173

AL-10960 (FAA)

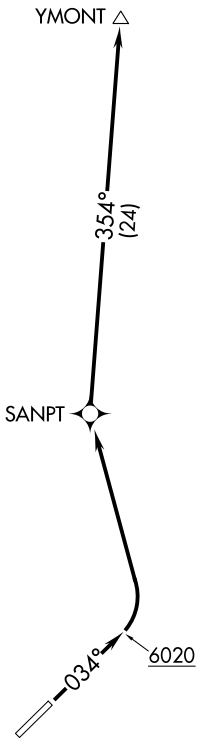
MANTI-EPHRAIM (41U)

# YMONT ONE DEPARTURE (OBSTACLE) (RNAV)

MANTI, UTAH

AWOS-3PT  
120.025  
SALT LAKE CENTER  
133.6 296.25  
CTAF  
122.8

**TOP ALTITUDE:  
ASSIGNED BY ATC**



NOTE: RNAV-1.  
NOTE: GPS required.

### TAKEOFF MINIMUMS

Rwy 3: Standard with minimum climb of 340' per NM to 7000.

### TAKEOFF OBSTACLE NOTES

Rwy 3: Rising terrain 7' from DER, left and right of centerline, up to 5517' MSL.

Rising terrain 48' from DER, 324' right of centerline, 5522' MSL.

Vehicles on road beginning 115' from DER, 522' left of centerline, up to 5526' MSL.

Vehicles on road and rising terrain beginning 122' from DER, 212' right of centerline, up to 5539' MSL.

Vehicles on road beginning 169' from DER, 24' left of centerline, up to 5537' MSL.

Vehicles on road and rising terrain beginning 225' from DER, 273' right of centerline, up to 5543' MSL.

Trees, bushes, poles and vehicles on road beginning 552' from DER, 40' right of centerline, up to 39' AGL/5568' MSL.

Pole 1710' from DER, 630' right of centerline, 5573' MSL.

Communication tower 1.9 NM from DER, 3176' right of centerline, 124' AGL/5851' MSL.

Pole 2 NM from DER, 3612' right of centerline, 5854' MSL.

Pole 2.1 NM from DER, 3970' right of centerline, 30' AGL/5900' MSL.

NOTE: Chart not to scale.

### DEPARTURE ROUTE DESCRIPTION

**TAKEOFF RUNWAY 3:** Climb heading 034° to 6020 then climbing left turn to 13000 direct SANPT then on track 354° to YMONT.

# YMONT ONE DEPARTURE (OBSTACLE) (RNAV)

(YMONT1.YMONT) 22JUN17

MANTI, UTAH  
MANTI-EPHRAIM (41U)

SW-4, 13 JUN 2024 to 11 JUL 2024

SW-4, 13 JUN 2024 to 11 JUL 2024