

APP CRS <b>210°</b>	Rwy Idg TDZE Apt Elev <b>N/A</b> <b>N/A</b> <b>N/A</b>
------------------------	---

# COPTER RNAV (GPS) 210°

WEST 30TH ST (JRA)

<p><b>▼</b> DME/DME RNP-0.3 NA. <b>▲</b> NA Radar required. Use Teterboro altimeter setting when not received use LaGuardia altimeter setting.</p>	<p>MISSED APPROACH: Climbing left turn to 2000 direct JEDIL and hold.</p>
--	---

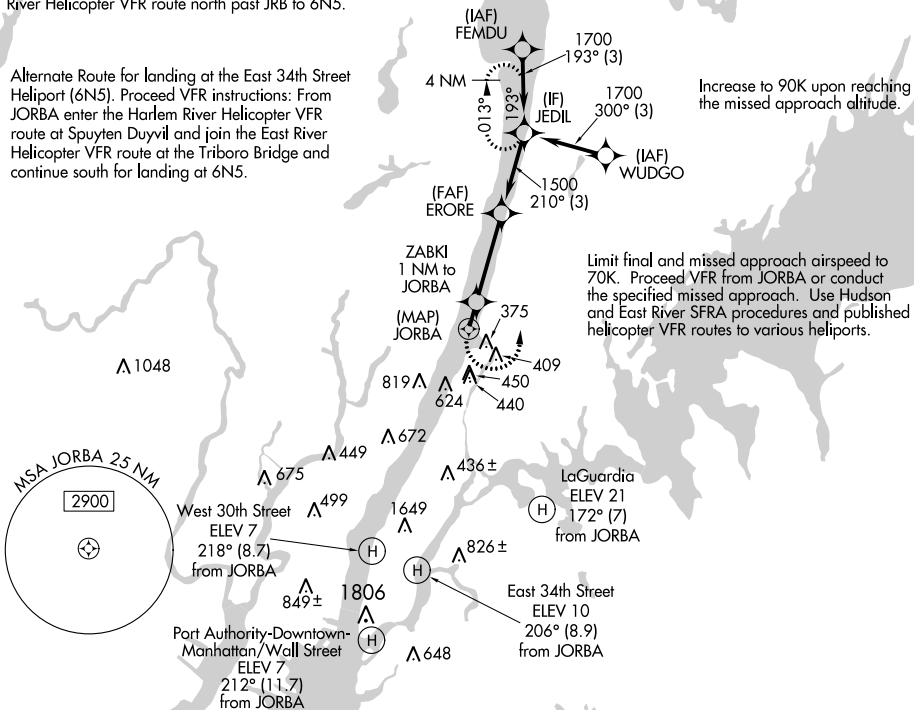
LA GUARDIA APP CON <b>126.05</b>	NEWARK APP CON <b>127.85</b>	UNICOM <b>123.050</b> (CTAF) <b>0</b>
-------------------------------------	---------------------------------	--

Proceed VFR instructions: From JORBA enter Hudson River helicopter VFR route at Spuyten Duyvil and continue south for landing at West 30th Street Heliport (JRA). Continue south and join the East River helicopter VFR route at Battery Park for landing at Wall Street Heliport (JRB). For landing at the East 34th Street Heliport (6N5) continue following East River Helicopter VFR route north past JRB to 6N5.

Limit initial and intermediate approach to 90K.

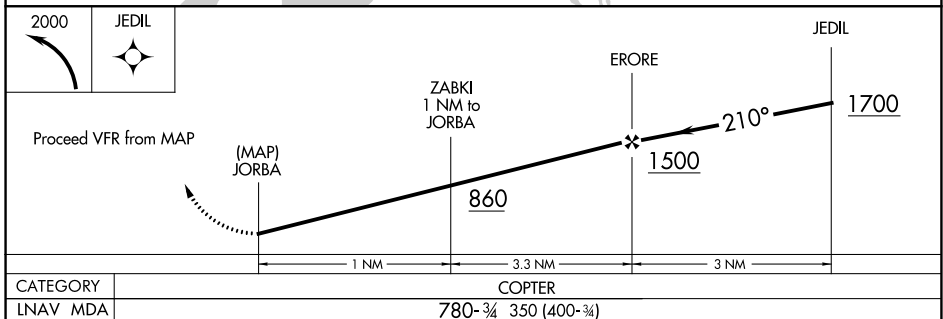
Alternate Route for landing at the East 34th Street Heliport (6N5). Proceed VFR instructions: From JORBA enter the Harlem River Helicopter VFR route at Spuyten Duyvil and join the East River Helicopter VFR route at the Triboro Bridge and continue south for landing at 6N5.

Increase to 90K upon reaching the missed approach altitude.



NE-2, 13 JUN 2024 to 11 JUL 2024

NE-2, 13 JUN 2024 to 11 JUL 2024



CATEGORY	COPTER	
LNAV MDA	780-¾ 350 (400-¾)	