

| | | | |
|--|------------------------|-----------------------------|---|
| WAAS CH 70735 W11A | APP CRS 111° | Rwy Idg TDZE Apt Elev | 3998 100 100 |
|--|------------------------|-----------------------------|---|

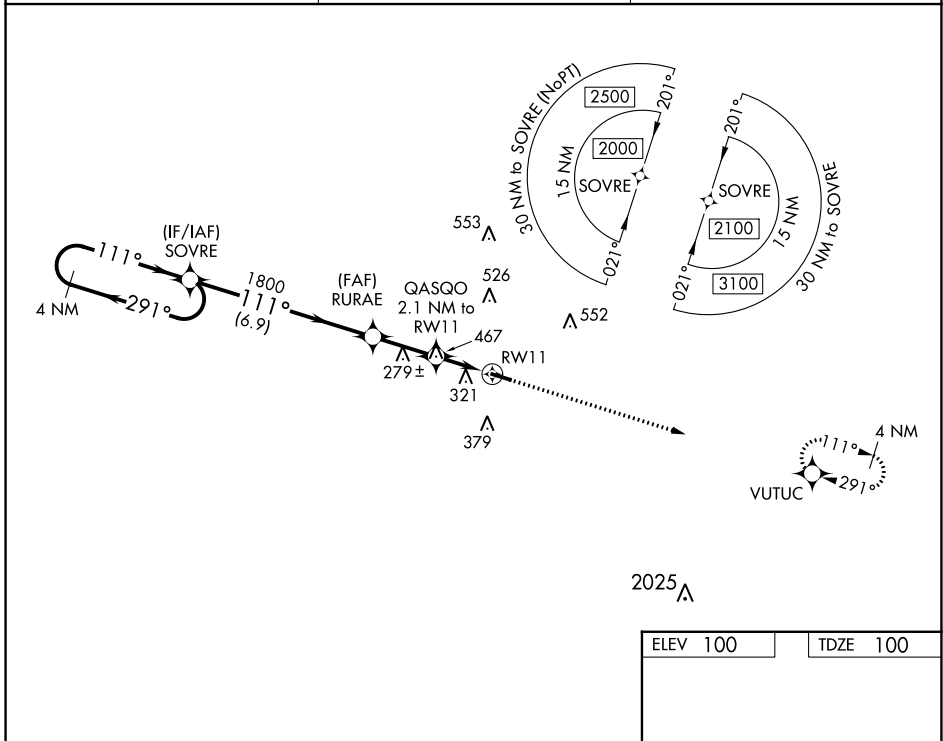
RNAV (GPS) RWY 11

GENEVA MUNI (33J)

⚠ DME/DME RNP-0.3 NA. Procedure NA at night. Rwy 11 helicopter visibility reduction below 1 SM NA. Use Cairns AAF altimeter setting, when not received, use Dothan altimeter setting and increase all MDA 40 feet, increase LP and LNAV Cat C visibility $\frac{1}{8}$ SM and Circling Cat C visibility $\frac{1}{4}$ mile.

⚠ NA MISSED APPROACH: Climb to 2000 direct VUTUC and hold.

| | | |
|----------------------------------|--|---------------------------------|
| KOZR ATIS 111.2 316.15 | CAIRNS APP CON * 133.75 270.35 | UNICOM 122.8 (CTAF) 0 |
|----------------------------------|--|---------------------------------|



SE-4, 13 JUN 2024 to 11 JUL 2024

SE-4, 13 JUN 2024 to 11 JUL 2024

| | | | |
|----------------------|----------------------|----------------------|---|
| 4 NM Holding Pattern | | 2000 VUTUC | |
| SOVRE | | RURAE | |
| QASQO 2.1 NM to RW11 | | RW11 | |
| 6.9 NM | | 2.4 NM | |
| 2000 | | 1800 | |
| 920 | | 3998 X 100 | |
| CATEGORY | A | B | C |
| LP MDA | 600-1 | 500 (500-1) | 600-1 $\frac{3}{8}$ 500 (500-1 $\frac{3}{8}$) |
| LNAV MDA | 640-1 | 540 (600-1) | 640-1 $\frac{1}{2}$ 540 (600-1 $\frac{1}{2}$) |
| C CIRCLING | 700-1 600 (600-1) | 720-1 620 (700-1) | 900-2 $\frac{1}{4}$ 800 (800-2 $\frac{1}{4}$) |

MIRL Rwy 11-29 0