

WAAS CH 77538 W22A	APP CRS 224°	Rwy Idg TDZE Apt Elev	5500 276 276
--	------------------------	-----------------------------	---

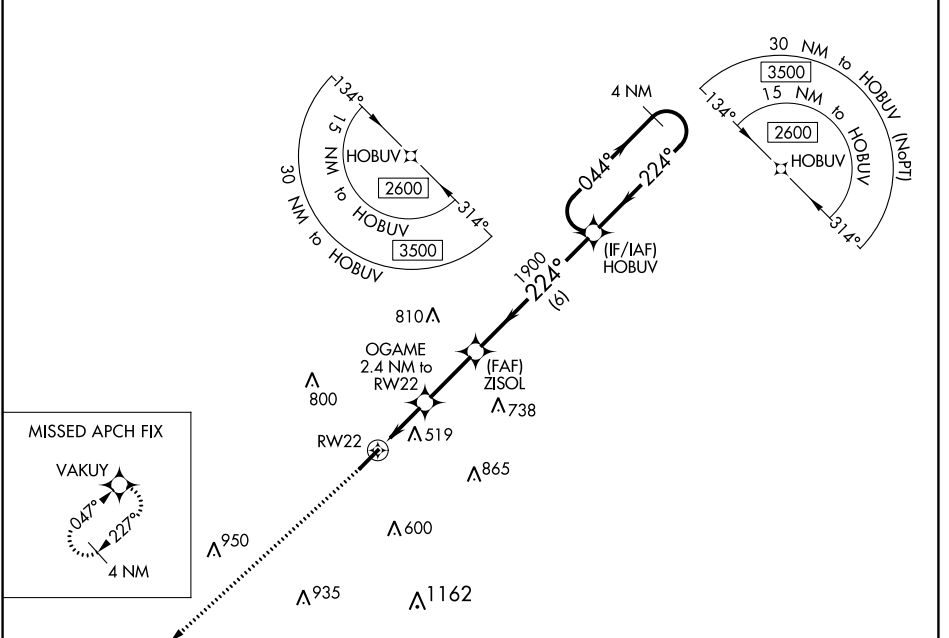
RNAV (GPS) RWY 22

CONWAY RGNL (CXW)

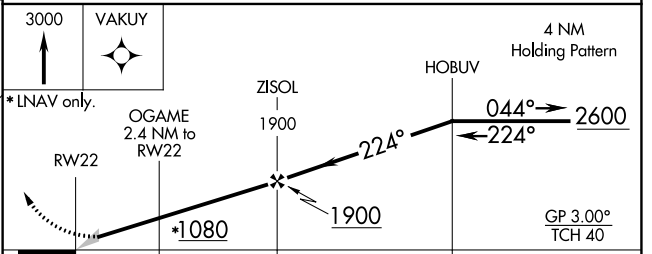
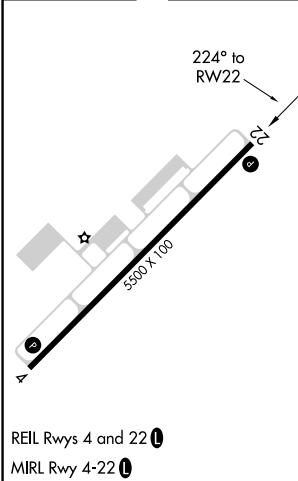
Baro-VNAV NA.
NA Use Bill and Hillary Clinton National/Adams Field altimeter setting; when not received, procedure NA.
 DME/DME RNP-0.3 NA.

MISSED APPROACH: Climb to 3000 direct VAKUY and hold.

AWOS-2 118.775	LITTLE ROCK APP CON 135.4 353.6 (040°-239°) 119.5 306.2 (240°-039°)	CLNC DEL 121.2	UNICOM 123.05 (CTAF) 📻
--------------------------	---	--------------------------	---



ELEV 276	TDZE 276
----------	----------



CATEGORY	A	B	C	D
LPV DA		533-7/8	257 (300-7/8)	
LNAV/VNAV DA		853-2	577 (600-2)	
LNAV MDA	780-1	504 (600-1)	780-1 3/8	504 (600-1 1/8)
C CIRCLING	1000-1	724 (800-1)	1000-2 724 (800-2)	1380-3 1104 (1200-3)

SC-1, 13 JUN 2024 to 11 JUL 2024

SC-1, 13 JUN 2024 to 11 JUL 2024