

WAAS CH 82242 W17A	APP CRS 173°	Rwy Idg TDZE Apt Elev	5500 1409 1409
--	------------------------	-----------------------------	---

RNAV (GPS) RWY 17

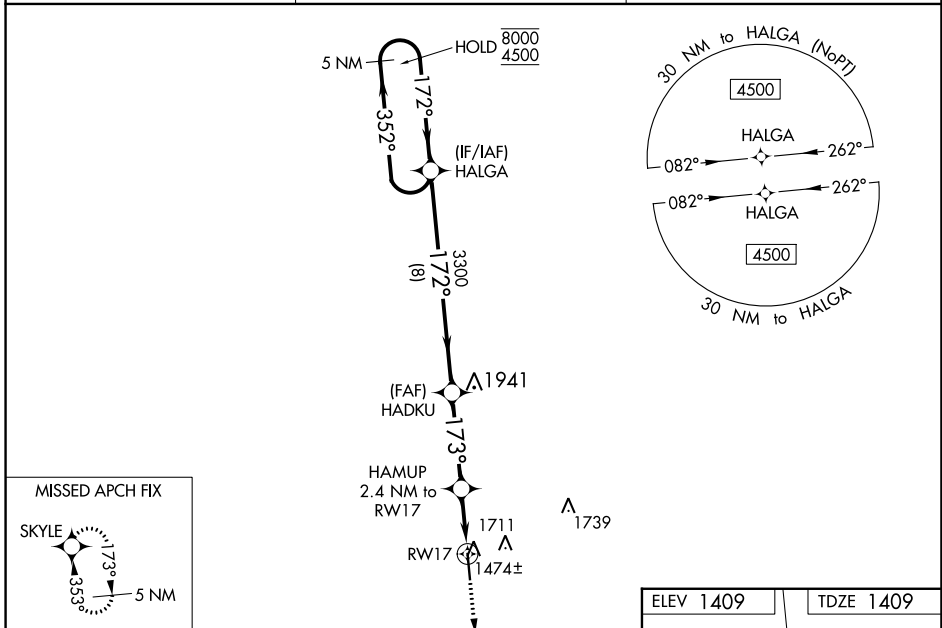
SIoux COUNTY RGnL (SXX)

RNP APCH.

⚠ Baro-VNAV and VDP NA when using Le Mars altimeter setting. For uncompensated Baro-VNAV systems, LNAV/VNAV NA below -17°C or above 34°C. When local altimeter setting not received, use Le Mars altimeter setting: increase DA 59 feet and all MDA 60 feet. Increase LNAV/VNAV all Cats visibility to ½ SM and LNAV Cat C/D visibilities to ¾ SM.

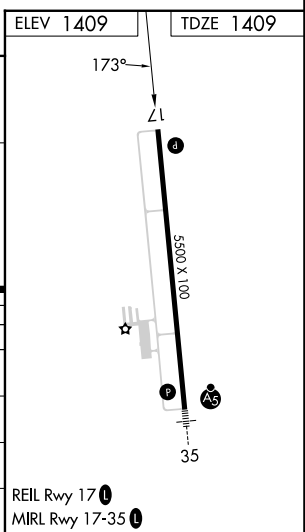
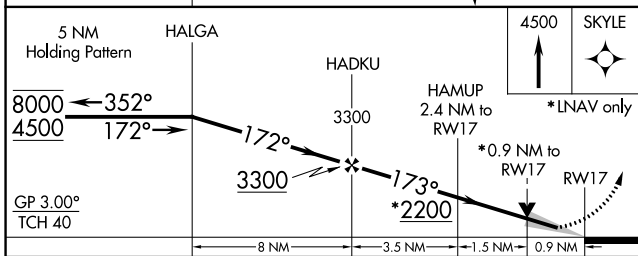
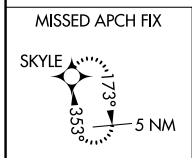
MISSED APPROACH: Climb to 4500 direct SKYLE and hold.

AWOS-3P 120.075	SIoux CITY APP CON * 124.6 307.0	UNICOM 122.7 (CTAF)
---------------------------	--	-------------------------------



NC-3, 13 JUN 2024 to 11 JUL 2024

NC-3, 13 JUN 2024 to 11 JUL 2024



CATEGORY	A	B	C	D
LPV DA		1609-¾	200 (200-¾)	
LNAV/VNAV DA		1659-¾	250 (300-¾)	
LNAV MDA		1740-1	331 (400-1)	
CIRCLING	1820-1 411 (500-1)	2080-1 671 (700-1)	2080-2 671 (700-2)	2080-2¼ 671 (700-2¼)