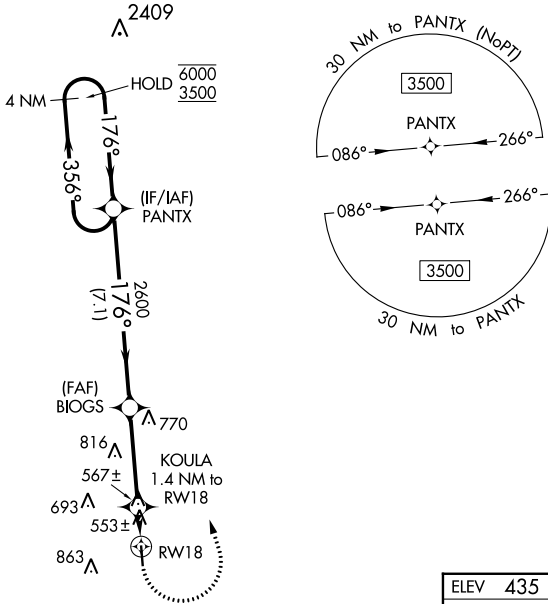


APP CRS	Rwy Idg	4007
176°	TDZE	435
	Apt Elev	435

RNAV (GPS) RWY 18

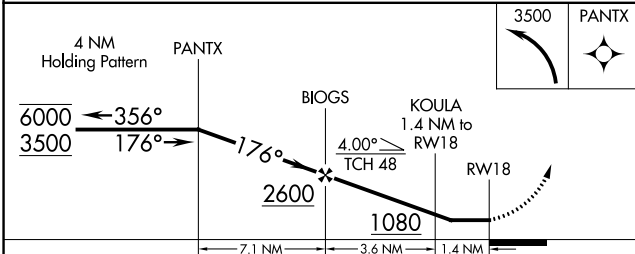
COPIAH COUNTY (M11)

RNP APCH.		MISSED APPROACH: Climbing left turn to 3500 direct PANTX and hold, continue climb-in-hold to 3500.	
<p>▽ Rwy 18 helicopter visibility reduction below 1 SM NA. Use Brookhaven altimeter setting, when not received, use Hawkins Fld altimeter setting and increase all MDA 40 feet. Straight-in Rwy 18 NA at night, Circling Rwy 18 NA at night.</p> <p>▲ NA</p>	1R7 AWOS-3P 118.125	MEMPHIS CENTER 132.5 259.1	CTAF 122.9



SC-4, 13 JUN 2024 to 11 JUL 2024

SC-4, 13 JUN 2024 to 11 JUL 2024



ELEV 435	TDZE 435
----------	----------

Diagram showing RWY 18 and RWY 36 with 4007 X 75 markings. Elevation 81 and 36 are indicated. A 1.0% UP slope is shown for RWY 36.

CATEGORY	A	B	C	D
LNVA MDA	860-1	425 (500-1)	NA	
C CIRCLING	940-1 505 (600-1)	1140-1 705 (800-1)	NA	

MIRL Rwy 18-36
REIL Rws 18 and 36