

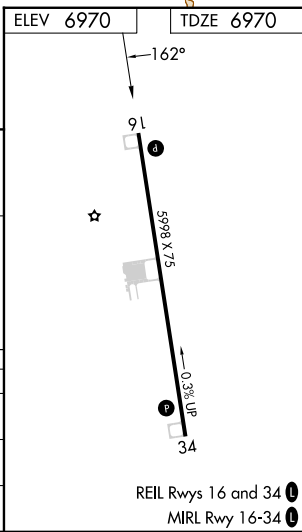
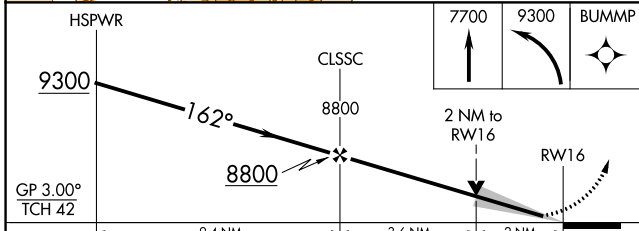
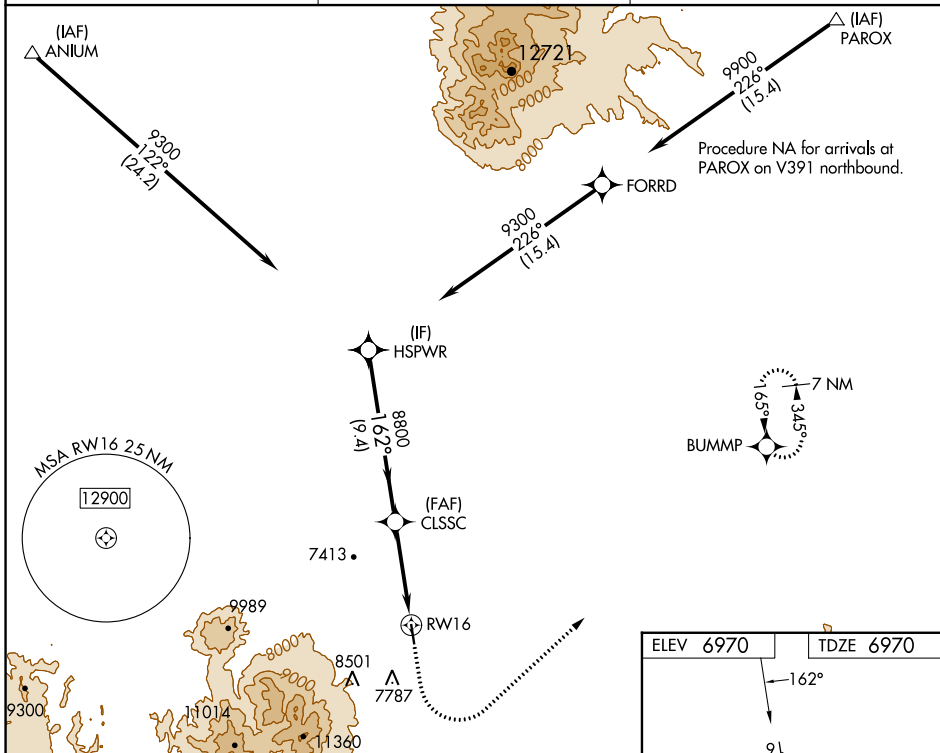
WAAS CH <b>86246</b> <b>W16A</b>	APP CRS <b>162°</b>	Rwy ldg TDZE Apt Elev	<b>5998</b> <b>6970</b> <b>6970</b>
--	------------------------	-----------------------------	---

# RNAV (GPS) RWY 16

MONTICELLO (U64)

RNP APCH - GPS.	MISSED APPROACH: Climb to 7700 then climbing left turn to 9300 direct BUMMP and hold.
▼ For uncompensated Baro-VNAV systems, LNAV/VNAV NA below -28°C or above 54°C.	

AWOS-3PT <b>121.025</b>	DENVER CENTER <b>127.55 256.875</b>	UNICOM <b>122.8 (CTAF) 0</b>
----------------------------	--	---------------------------------



CATEGORY	A	B	C	D
LPV DA	7170-1	200 (200-1)		NA
LNAV/VNAV DA	7407-1¼	437 (500-1¼)		NA
LNAV MDA	7660-1	690 (700-1)		NA

REIL Rws 16 and 34  
MIRL Rwy 16-34

SW-4, 13 JUN 2024 to 11 JUL 2024

SW-4, 13 JUN 2024 to 11 JUL 2024