

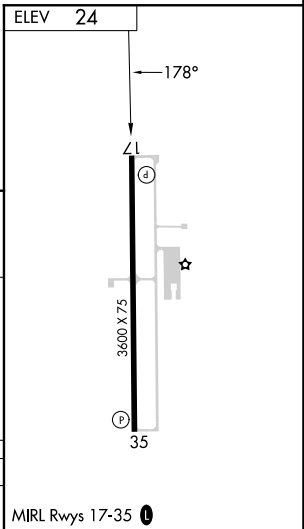
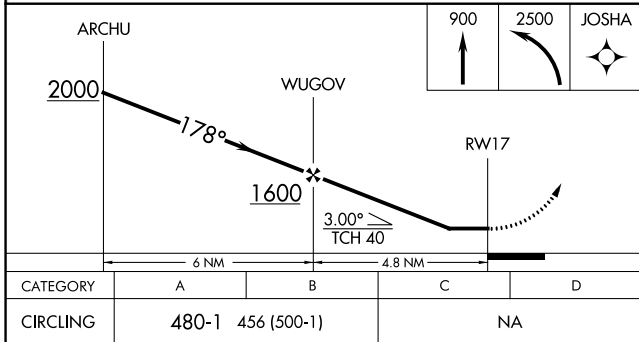
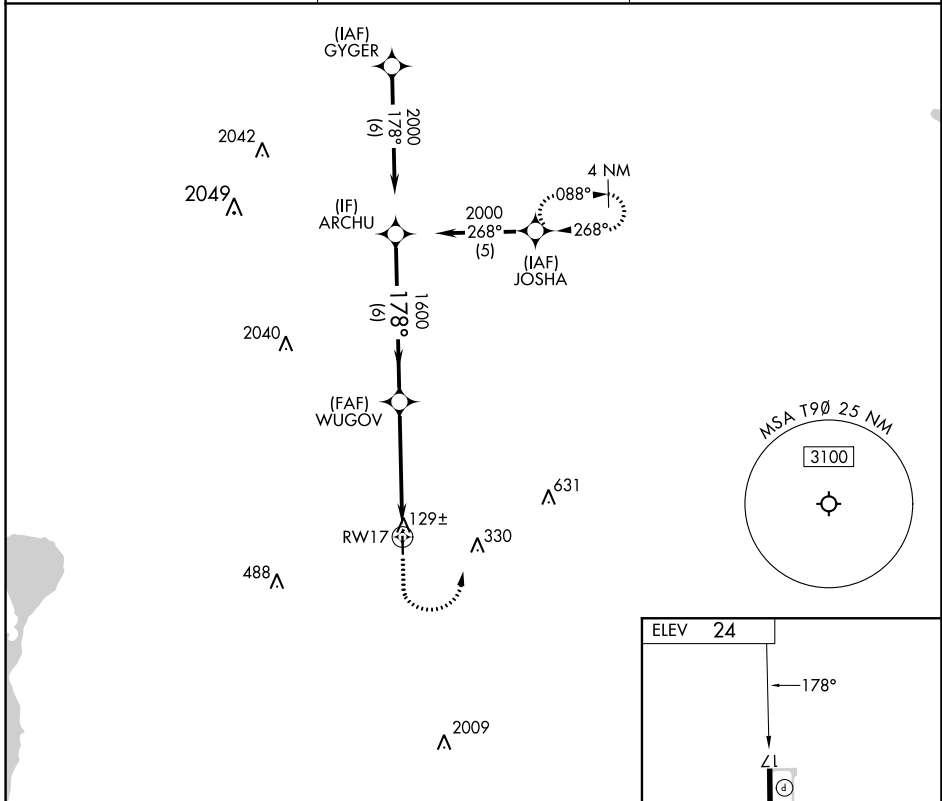
APP CRS	Rwy Idg	NA
178°	TDZE	NA
	Apt Elev	24

RNAV (GPS)-A

CHAMBERS COUNTY/WINNIE STOWELL (T9 \emptyset)

RNP APCH - GPS.	<p>⚠ Procedure NA at night. Rwy 17 and 35 helicopter visibility reduction below 1 SM NA. Use Beaumont altimeter setting; when not received, use Liberty altimeter setting and increase all MDA's 20 feet.</p>	<p>MISSED APPROACH: Climb to 900 then climbing left turn to 2500 direct JOSHUA and hold.</p>
-----------------	--	---

BMT AWOS-3PT 118.425	HOUSTON APP CON 121.3 377.1	CTAF 122.9 \emptyset
--------------------------------	---------------------------------------	---



WINNIE/STOWELL, TEXAS	CHAMBERS COUNTY/WINNIE STOWELL (T9 \emptyset)
Orig 05OCT23	29°49'N-94°26'W

RNAV (GPS)-A

SC-5, 13 JUN 2024 to 11 JUL 2024

SC-5, 13 JUN 2024 to 11 JUL 2024