

# COPTER TACAN RWY 22

TACAN NGF Chan <b>93</b>	APCH CRS <b>192°</b>	Rwy Idg TDZE Arpt Elev <b>7772</b> <b>23</b> <b>23</b>
-----------------------------	-------------------------	---

AL-757 [USN]

KANEOHE BAY MCAS (PHNG)

RADAR required.

▼ \* Circling not authorized SE of Rwy 04-22.

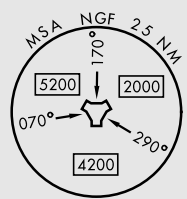
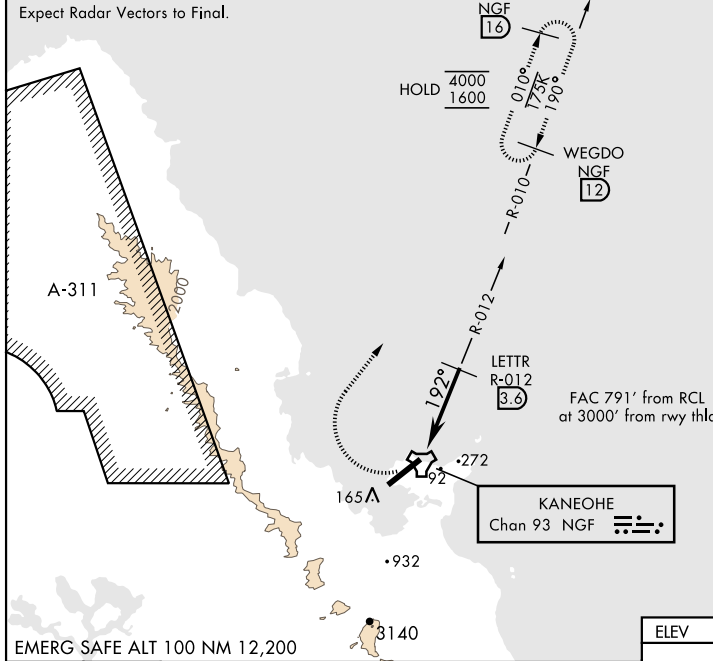
Visibility reduction not authorized.

† MISSED APPROACH: Climbing right turn to 1800, intercept NGF TACAN R-010 and proceed direct WEGDO and hold.

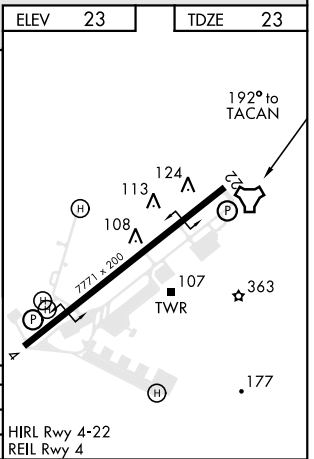
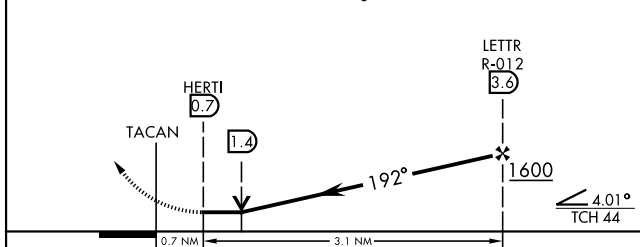
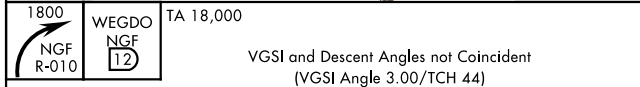
ATIS <b>284.5</b>	APP/DEP CON <b>125.0 263.5</b>	TOWER <b>120.7(CTAF) 360.2</b>	GND CON <b>382.8</b>	CLNC DEL <b>294.7</b>	ASR/ PAR
----------------------	-----------------------------------	-----------------------------------	-------------------------	--------------------------	-------------

CAUTION: Mountainous terrain E, S, and W of airfield.	Knots 60 120
Max procedure airspeed 90 KIAS.	V/V(fpm) 326 652

† Min climb of 326 ft/NM to 800  
Controlling Obstacle 27'



EMERG SAFE ALT 100 NM 12,200



CATEGORY	COPTER	
H-22	520-1	497 (500-1)
<b>CIRCLING*</b>	520-1	497 (500-1)

HIRL Rwy 4-22  
REIL Rwy 4

# COPTER TACAN RWY 22

PAC, 16 MAY 2024 to 11 JUL 2024

PAC, 16 MAY 2024 to 11 JUL 2024