

21224

HELUX FIVE DEPARTURE (OBSTACLE) (HELUX5•MKK)

KANEOHE BAY MCAS (PHNG)

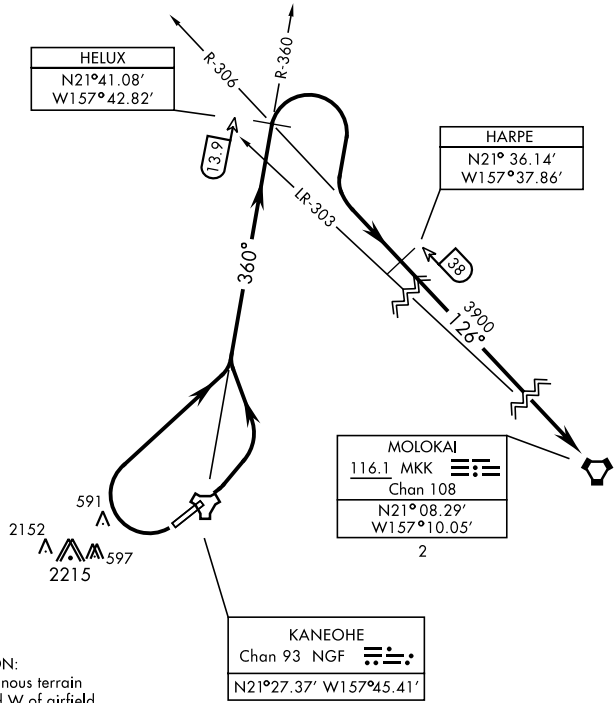
MOKAPU POINT, OAHU I, HAWAII

ATIS 284.5
 CLNC DEL
 294.7
 GND CON
 382.8
 KANEOHE TOWER
 120.7 (CTAF) 360.2
 KANEOHE APP/DEP CON
 125.0 263.5

AL-757 [USN]

| Rwy | Knots | 60 | 120 | 180 | 240 | 300 | 360 |
|-----|----------|-----|------|------|------|------|------|
| 22 | V/V(fpm) | 975 | 1950 | 2925 | 3900 | 4875 | 5850 |

Minimum Climb Rate to 3900



PAC, 16 MAY 2024 to 11 JUL 2024

PAC, 16 MAY 2024 to 11 JUL 2024

TA 18,000

DEPARTURE ROUTE DESCRIPTION

TAKE-OFF RWY 4: Turn left to intercept NGF TACAN R-360 to HELUX, then intercept MKK VORTAC R-306 to MKK.

TAKE-OFF RWY 22: Turn right as soon as practicable to intercept NGF TACAN R-360 to HELUX, then intercept MKK VORTAC R-306 to MKK.

HELUX FIVE DEPARTURE (OBSTACLE) (HELUX5•MKK)

Orig 12AUG21

MOKAPU POINT, OAHU I, HAWAII

KANEOHE BAY MCAS (PHNG)