

HI-TACAN Y RWY 22

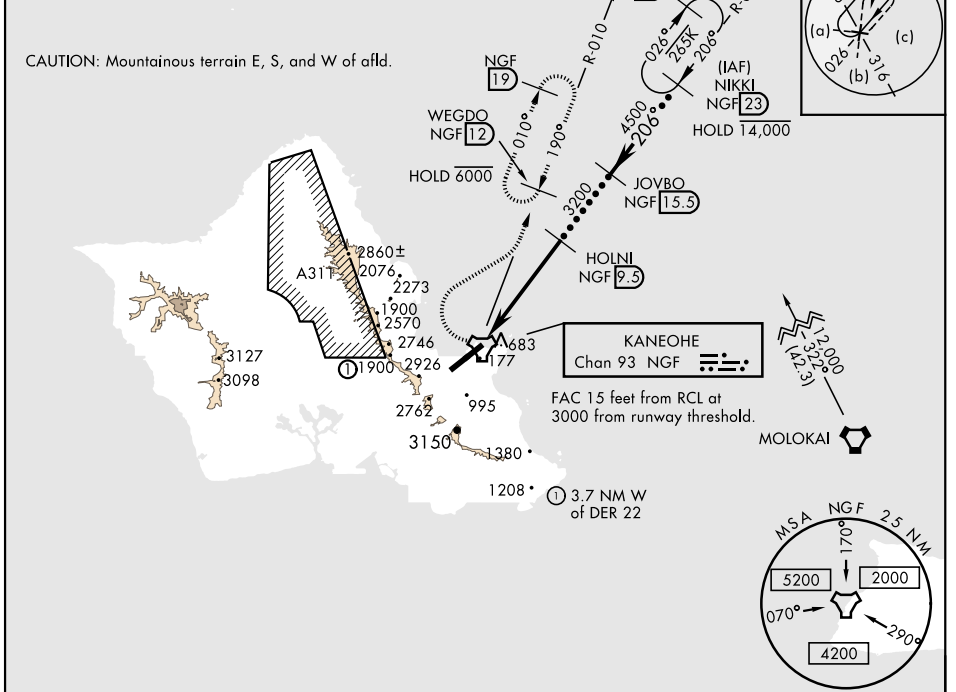
TACAN NGF Chan 93	APCH CRS 206°	Rwy Idg TDZE 23 Arpt Elev 23	AL-757 [USN]	KANEOHE BAY MCAS (PHNG)
--------------------------	----------------------	---	--------------	-------------------------

⚠ *Circling not authorized SE of Rwy 4-22.
 † MISSED APPROACH: Climbing right turn to 4100, intercept NGF TACAN R-010 and proceed direct WEGDO and hold.

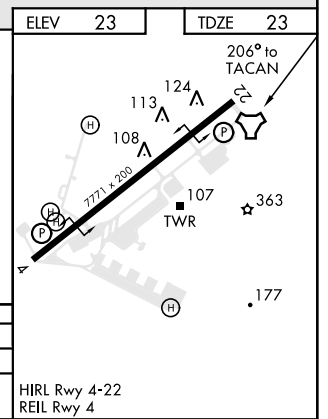
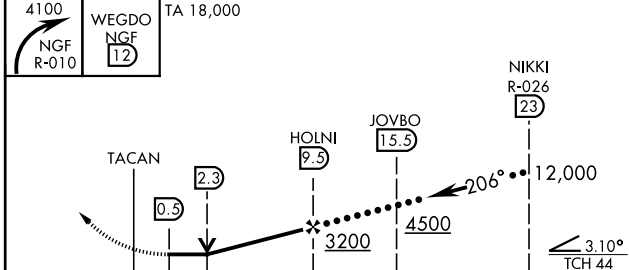
ATIS 284.5	APP/DEP CON 125.0 263.5	TOWER 120.7(CTAF) 360.2	GND CON 382.8	CLNC DEL 294.7	ASR/PAR
-------------------	--------------------------------	--------------------------------	----------------------	-----------------------	---------

Knots	60	120	180	240	300	360
V/V(fpm)	514	1028	1542	2056	2570	3084

† Min climb of 514 ft/NM to 3500 - Controlling Obstacle 2779



EMERG SAFE ALT 100 NM 12,200



ELEV 23	TDZE 23		
CATEGORY	C	D	E
S-22	820-2½	797	(800-2½)
CIRCLING*	1020-3 997 (1000-3)	3120-3	3097 (3100-3)
HIRL Rwy 4-22		REIL Rwy 4	

HI-TACAN Y RWY 22

PAC, 16 MAY 2024 to 11 JUL 2024

PAC, 16 MAY 2024 to 11 JUL 2024