

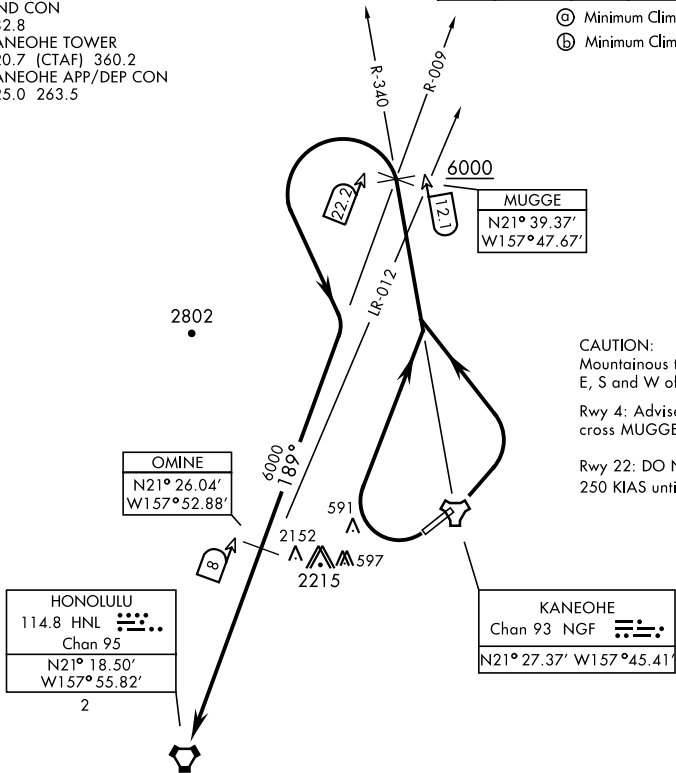
MUGGE NINE DEPARTURE (OBSTACLE) (MUGGE9•HNL)

MOKAPU POINT, OAHU I, HAWAII

AL-757 [USN]
 ATIS 284.5
 CLNC DEL
 294.7
 GND CON
 382.8
 KANEOHE TOWER
 120.7 (CTAF) 360.2
 KANEOHE APP/DEP CON
 125.0 263.5

Rwy	Knots	60	120	180	240	300	360
04 (a)	V/V(fpm)	473	946	1419	1892	2365	2838
22 (b)	V/V(fpm)	975	1950	2925	4900	4875	5850

- (a) Minimum Climb Rate to 6000
- (b) Minimum Climb Rate to 3900



CAUTION:
 Mountainous terrain
 E, S and W of airfield.
 Rwy 4: Advise ATC if unable to
 cross MUGGE at or above 6000
 Rwy 22: DO NOT exceed
 250 KIAS until OMINE.

PAC, 16 MAY 2024 to 11 JUL 2024

PAC, 16 MAY 2024 to 11 JUL 2024

TA 18,000



DEPARTURE ROUTE DESCRIPTION

TAKE-OFF RWY 4: Turn left to intercept NGF TACAN R-340 to MUGGE, then intercept HNL VORTAC R-009 to HNL. Cross MUGGE at or above 6000.

TAKE-OFF RWY 22: Turn right as soon as practicable to intercept NGF TACAN R-340 to MUGGE, then intercept HNL VORTAC R-009 to HNL.