

RNAV (GPS) Y RWY 22

AL-757 [USN]

KANEHOE BAY MCAS (PHNG)

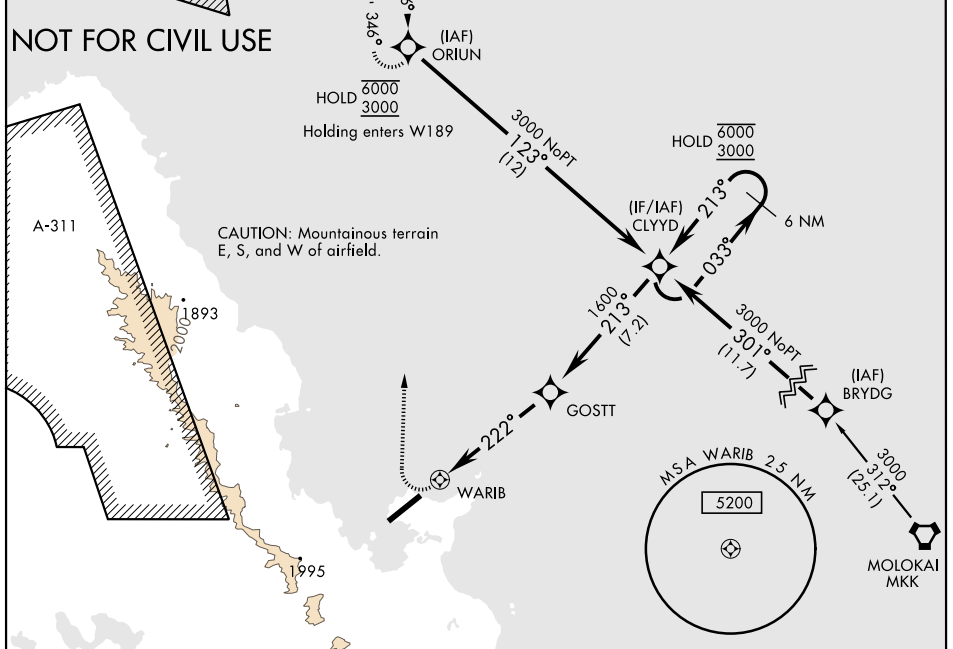
APCH CRS	Rwy Idg	7772
222°	TDZE	23
	Arpt Elev	23

RNP APCH	MISSED APPROACH: Climb to 900 then climbing right turn to 4200 direct ORIUN and hold.
----------	---

ATIS 284.5	APP/DEP CON 125.0 263.5	TOWER 120.7 (CTAF) 360.2	GND CON 382.8	CLNC DEL 294.7	ASR/ PAR
----------------------	-----------------------------------	------------------------------------	-------------------------	--------------------------	-------------

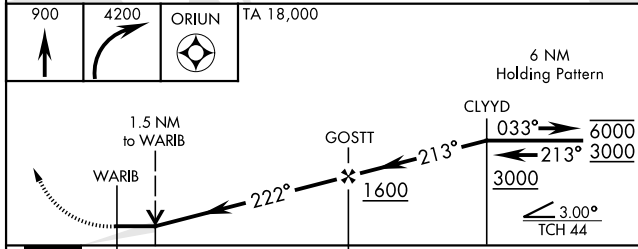
	Knots	60	120	180	240	300	360
	V/V (fpm)	251	502	753	1004	1255	1506

Min climb of 251 ft/NM to 2200 - Controlling Obstacle 1838

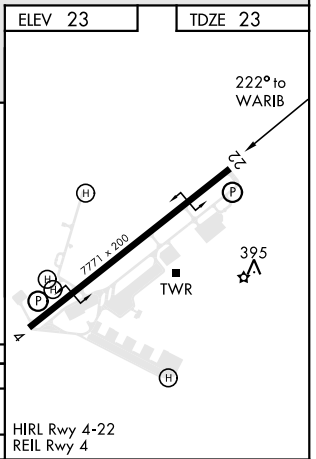


EMERG SAFE ALTITUDE 100 NM 12,200

900	4200	ORIUN	TA 18,000
-----	------	-------	-----------



CATEGORY	A	B	C	D
LNVA MDA	NOT AUTHORIZED			880-2½ 857 (900-2½)
CIRCLING	NOT AUTHORIZED			



RNAV (GPS) Y RWY 22

PAC, 16 MAY 2024 to 11 JUL 2024

PAC, 16 MAY 2024 to 11 JUL 2024