

GALENA

EDWARD G PITKA SR (GAL)(PAGA) 0 NW UTC-9(-8DT) N64°44.17' W156°56.07'

FAIRBANKS

154 B NOTAM FILE GAL

H-1A, 2J, L-3C, 4I

RWY 08-26: H6000X100 (ASPH) S-110, D-144, 2D-240

IAP, DIAP, AD

PCN 62 F/C/X/T MIRL

RWY 08: Thld dsplcd 400'.

RWY 26: Thld dsplcd 800'. Road.

RWY 06-24: 2600X50 (GRVL)

RUNWAY DECLARED DISTANCE INFORMATION

RWY 08: TORA-6000 TODA-6000 ASDA-6000 LDA-5600

RWY 26: TORA-6000 TODA-6000 ASDA-6000 LDA-5200

SERVICE: FUEL 100LL, JET A LGT ACTVT MIRL Rwy 08-26—CTAF.

AIRPORT REMARKS: Attended Oct-Apr, Mon-Fri 1500-0200Z†. Fuel avbl

Mon-Fri 1700-0200Z†; aft hr fee—907-656-1872. Ultralights on

& invof arpt. Acft may be closer to lndg sfc than it appears. Rwy

08-26 windshear psbl blw 2000 ft on fnl. Snow removal

ops—monitor CTAF. Maint hrs Mon-Fri 1700-0100Z† excp hols.

Hazus rptg durg duty hr unless prior arngmt in writing— Amgr, P.O.

Box 09, Galena AK 99741.

AIRPORT MANAGER: 907-451-5280

WEATHER DATA SOURCES: AWOS-3P 132.525 (907) 656-2483. (WX CAM)

COMMUNICATIONS: CTAF 123.0

GALENA RCO 122.2 (FAIRBANKS RADIO)

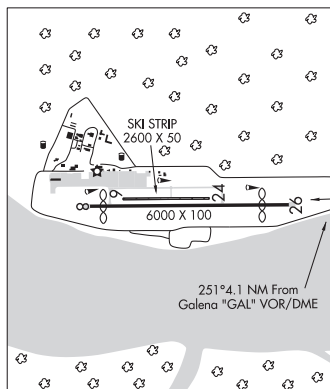
ANCHORAGE CENTER APP/DEP CON 127.0 290.2

AIRSPACE: CLASS E svc continuous.

RADIO AIDS TO NAVIGATION: NOTAM FILE GAL.

GALENA (H) (H) VORW/DME 114.8 GAL Chan 95 N64°44.29' W156°46.63' 256° 4.1 NM to fld. 183/12E.

COMM/NAV/WEATHER REMARKS: For a toll free call to Fairbanks FSS dial 1-866-248-6516.



GALENA N64°44.29' W156°46.63' NOTAM FILE GAL.

FAIRBANKS

(H) (H) VORW/DME 114.8 GAL Chan 95 256° 4.1 NM to Edward G Pitka Sr. 183/12E.

H-1A, 2J, L-3C, 4I

RCO 122.2 (FAIRBANKS RADIO)

GAMBELL (GAM)(PAGM) 0 SW UTC-9(-8DT) N63°46.00' W171°43.97'

BETHEL

30 B NOTAM FILE GAM

H-1A, L-4G

RWY 16-34: H4500X100 (ASPH-CONC) S-22 MIRL

IAP

RWY 16: REIL. VASI(V4L)—GA 3.0° TCH 37'. Antenna. Rgt tfc.

RWY 34: ODALS. REIL. VASI(V4R)—GA 3.0° TCH 39'.

SERVICE: LGT ACTVT ODALS Rwy 34; REIL Rwy 16 and Rwy 34; VASI

Rwy 16 and Rwy 34; MIRL Rwy 16-34—CTAF.

AIRPORT REMARKS: Unattended. Cold temperature airport. Altitude

correction required at or below -27C. Rwy condition not monitored;

recommend visual inspection prior to landing. Rwy 16-34 safety

areas soft and loose gravel. 98 ft twr (lgt) 3400 ft fm apch end Rwy

16.

AIRPORT MANAGER: 907-443-2500

WEATHER DATA SOURCES: AWOS-3P 125.9 (907) 985-5733. (WX CAM)

COMMUNICATIONS: CTAF 122.7

RCO 122.0 (NOME RADIO)

ANCHORAGE CENTER APP/DEP CON 132.2

RADIO AIDS TO NAVIGATION: NOTAM FILE GAM.

NDB/DME (MHW) 369 GAM Chan 92 N63°46.91'

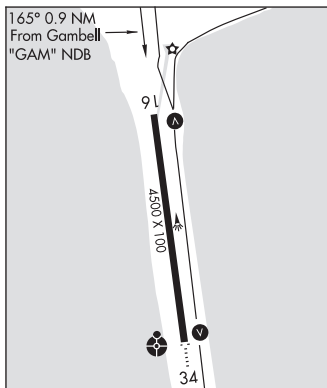
W171°44.21' at fld. 30/8E.

DME unusable:

070°-135° byd 9 NM blw 10,000'

COMM/NAV/WEATHER REMARKS: For a toll free call to Nome FSS dial

800-478-8400. For a toll free call to Fairbanks FSS dial 1-866-248-6516. DME chan 92 paired with VHF freq 114.5.



GANNON'S LANDING (See WASILLA on page 255)

GATTIS STRIP (See WASILLA on page 255)