

JUNEAU INTL (JNU)(PAJN) 7 NW UTC-9(-8DT) N58°21.28' W134°34.71'

25 B TPA—See Remarks AOE Class I, ARFF Index C NOTAM FILE JNU

JUNEAU

H-1C, L-1B

IAP, AD

RWY 08-26: H8857X150 (ASPH-GRVD) S-120, D-250, 2D-550

PCN 89 F/C/X/T HIRL CL

RWY 08: MALSF. REIL. VASI(V2L)—GA 3.5° TCH 38'. RVR-TR Tower.

Rgt tfc.

RWY 26: MALSF. REIL. PAPI(P4L)—GA 3.5° TCH 46'. RVR-TR

RUNWAY DECLARED DISTANCE INFORMATION

RWY 08: TORA-8857 TODA-8857 ASDA-8457 LDA-8457

RWY 26: TORA-8857 TODA-8857 ASDA-8457 LDA-8457

SERVICE: S4 FUEL 100LL, JET A1+ LGT For HIRL Rwy 08-26,

MALSF Rwy 08 and REIL Rwy 26 ctc JNU twr on freq 118.7. When ATCT clsd ctc JNU FSS on freq 118.7. VASI Rwy 08 and PAPI Rwy 26 opr 24 hrs. Rwy 26 PAPI unusbl byd 2 NM due to terrain. Rwy 08 VASI aligned aprx 13 degs rgt of ry cntrl and is not visible on ry cntrl. Rwy 08 VASI unusbl byd 06 degs left of crs. Rwy 08 RLLS lgts. Rwy 26 MALF NSTD; length 800 ft.

AIRPORT REMARKS: Attended continuously. Fuel avbl thru arpt svcs on UNICOM or 907-789-0055 or 907-789-5622. Cold temperature airport. Altitude correction required at or below -0C. Wildlife and birds on and in/ov arpt. Incr helicopter/lgt acft activity Apr 15-Oct 1 entire length on Gastineau Channel and within 5 miles of arpt. Paragliding activity 3 miles North of arpt in/ov Thunder Mtn and over Gastineau Channel nears downtown Apr 15-Oct 1 6000' and blo. Airframe/powerplant svc for single/twin propeller engine acft turbine and avionics. Mil contract fuel avbl. National Guard 24 hr PPR due to ltd parking, C907-789-3366. 1630-0100Z± weekdays ctc Guard Ops, 10 minutes prior to ldg on 124.65. Mountainous background restricts controllers visibility of apch Rwy 26. Rwy visibility value Rwy 08 and Rwy 26 avbl. Apron terminal ramp clsd to rotorcraft. Apron US CUSTOMS ramp clsd to acft with wingspan more than 79' intl acft with wingspan more than 79' and all intl rotorcraft use E-1 ramp (natl guard ramp). TPA 1500' AGL for large turbine acft, 1000' AGL for fixed wing acft and 500' AGL for helicopters. Rwy 08-26 sand used to enhance rwy friction may not meet FAA specs. Ldg fee. See Special Notices and General Notices for additional information on ops in Juneau area.

AIRPORT MANAGER: 907-789-7821

WEATHER DATA SOURCES: ASOS (907) 789-1243 LLWAS. (WX CAM)

COMMUNICATIONS: CTAF 118.7 UNICOM 122.95 ATIS 135.2

FSS JNU (JUNEAU)

JUNEAU RADIO 118.7 121.5 122.2 243.0

JUNEAU DOWNTOWN RCO 122.15 (JUNEAU FSS)

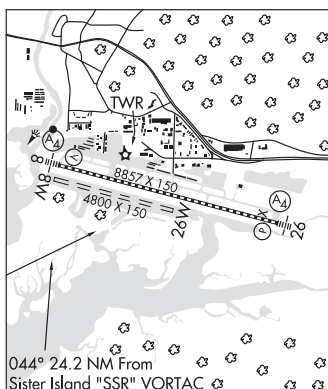
Ⓡ **ANCHORAGE CENTER APP/DEP CON** 133.9

TOWER 278.3 118.7 120.7 (Apr 1-Sep 30 1500-0800Z±, Oct 1-Mar 31 1600-0500Z±) **GND CON** 121.9

NG OPS 124.65 64.70

AIRSPACE: CLASS D svc 1 Apr - Sep 30 1500-0800Z±, 1 Oct-Mar 31 1600-0500Z±; other times CLASS E.

VOR TEST FACILITY (VOT) 111.0



CONTINUED ON NEXT PAGE

CONTINUED FROM PRECEDING PAGE

RADIO AIDS TO NAVIGATION: NOTAM FILE JNU.

SISTERS ISLAND (H) VORTACW 114.0 SSR Chan 87 N58°10.66' W135°15.53' 043° 24.0 NM to fld. 40/20E.

VOR unusable:

- 050°-070° byd 12 NM blo 10,000'
- 115°-130° byd 32 NM blo 8,000'
- 131°-175° byd 25 NM blo 13,000'
- 176°-189° byd 35 NM blo 14,000'
- 190°-245° byd 30 NM blo 12,000'
- 246°-260° byd 18 NM blo 7,000'
- 306°-360° byd 21 NM

TAC AZM unusable:

- 050°-070° byd 12 NM blo 10,000'
- 115°-130° byd 32 NM blo 8,000'
- 131°-175° byd 25 NM blo 13,000'
- 176°-189° byd 28 NM blo 14,000'
- 190°-245° byd 30 NM blo 12,000'
- 246°-260° byd 18 NM blo 7,000'
- 306°-360° byd 21 NM

DME unusable:

- 050°-070° byd 12 NM blo 10,000'
- 115°-130° byd 32 NM blo 8,000'
- 131°-175° byd 25 NM blo 13,000'
- 176°-189° byd 28 NM blo 14,000'
- 190°-245° byd 30 NM blo 12,000'
- 246°-260° byd 18 NM blo 7,000'
- 306°-360° byd 21 NM

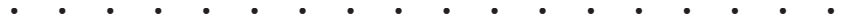
COGHLAN ISLAND NDB (HWZ) 212 CGL N58°21.56' W134°41.97' 074° 3.8 NM to fld. 58/20E.

NDB unusable:

- 325°-050° byd 30 NM
- 270°-324° byd 35 NM
- 220°-270° byd 24 NM blo 13,000'

LDA/DME 109.9 I-JDL Chan 36 Rwy 08. LOC unusable byd 30° left of inbound course.

COMM/NAV/WEATHER REMARKS: Ctc Juneau FSS for arpt advisory service on 118.7 when twr is clsd. For a toll free call to Juneau FSS dial 1-866-297-2236. For lcl call to Juneau FSS call 907-789-7380. Between May and Sep an additional twr freq of 120.7 will be in use. Its use will be announced via the ATIS. All other times use 118.7. Juneau Intl Seaplane Basin contact Juneau Tower on freq 118.7 for taxi, take-off and landing instructions. Waterlane controlled by Juneau Tower. Taxiing acft should taxi clockwise around the outer edge of float pond.



WATERWAY 08W-26W: 4800X150 (WATER)

SEAPLANE REMARKS: Attended continuously. Wildlife and birds on and in vicinity of seaplane base. Transient dock avbl for public use for up to six acft, SW corner.

KAARUK N67°40.04' W149°49.50'
RCO 122.4 (FAIRBANKS RADIO)

FAIRBANKS
L-4J

KACHEMAK N59°38.48' W151°30.02' NOTAM FILE HOM.
NDB (HW) 277 ACE at Homer. 17E.

SEWARD
H-1B, 2K, L-1A, 2J, 3D, 4F