

NOORVIK

ROBERT/BOB/CURTIS MEML (D76)(PFNO) 1 SE UTC-9(-8DT) N66°49.05' W161°01.34'

NOME
H-1A, L-4I
IAP

55 B NOTAM FILE D76

RWY 06-24: 4000X100 (GRVL-DIRT) MIRL

RWY 06: PAPI(P4R)—GA 3.0° TCH 25'.

SERVICE: LGT ACTVT PAPI Rwy 06; MIRL Rwy 06-24—CTAF.

AIRPORT REMARKS: Unattended. Rwy cond unmntd; rcmd visual insp bfr lndg. Rwy 06-24 mkd with lgts and plastic mkr. Winter snow removal—mnt CTAF. Cold temperature airport. Altitude correction required at or below -23C.

AIRPORT MANAGER: 907-442-3147

WEATHER DATA SOURCES: AWOS-3P 120.00 (907) 636-2010.

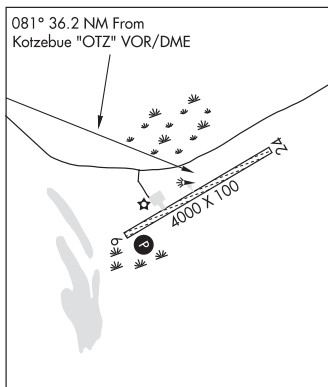
COMMUNICATIONS: CTAF 122.7

Ⓡ **ANCHORAGE CENTER APP/DEP CON** 119.2

RADIO AIDS TO NAVIGATION: NOTAM FILE OTZ.

KOTZEBUE (H) (H) VORW/DME 115.7 OTZ Chan 104 N66°53.14' W162°32.40' 081° 36.2 NM to fld. 121/15E.

COMM/NAV/WEATHER REMARKS: For LC to Kotzebue FSS dial 907-442-3310. For a toll free call to Kotzebue FSS dial 1-866-478-7460. For a toll free call to Fairbanks FSS dial 1-866-248-6516



NORTH POLE

AIRWAY (5AK3) PVT 2 NE UTC-9(-8DT) N64°46.39' W147°20.03'

FAIRBANKS

480 NOTAM FILE

RWY 15-33: 2550X45 (GRVL)

RWY 15: Road.

RWY 33: Trees.

AIRPORT REMARKS: Unattended. Pvt arpt; ops members only. Lnd at your own risk. Tsnt PPR—Amgr or property owner. Not mntnd; fac na. Rwy cond unmnt; rcmd visual insp bfr use. CTN: Ops fm adj gravel pit, pond and timber trails rwy. Ski expt ops durg fall, winter and spring. Rwy 15-33 packed snow winter months. Turnaround N and S end; midfield turnaround NA. Wind indicator: Rwy 33 apch end.

AIRPORT MANAGER: 907-347-1460

COMMUNICATIONS: CTAF 122.8

COMM/NAV/WEATHER REMARKS: For a toll free call to Fairbanks FSS dial 1-866-248-6516, for a local call to Fairbanks FSS dial 907-474-0137.

BRADLEY SKY-RANCH (95Z) 1 NW UTC-9(-8DT) N64°45.55' W147°23.26'

FAIRBANKS
L-3A, 3D, 4J

483 NOTAM FILE FAI

RWY 15-33: 4100X60 (GRVL-DIRT)

RWY 15: Road.

RWY 33: Road. Rgt tfc.

NOISE: For noise abatement owner requests pilots maintain maximum feasible altitude when landing on Rwy 15.

AIRPORT REMARKS: Attended daylight hours. Recommend visual inspection prior landing. Hard packed snow surface is maintained on rwy Nov-Apr. Be alert: Ultralight and glider activity on and invof arpt. Dirt road crosses apchs to Rwy 15 and Rwy 33. Rwy 15-33 thlds marked with panels.

AIRPORT MANAGER: 907-488-9792

COMMUNICATIONS: CTAF/UNICOM 122.8

SUAIS 125.3 126.3 (1800-758-8723).

RADIO AIDS TO NAVIGATION: NOTAM FILE FAI.

FAIRBANKS (H) (H) VORTACW 108.6 FAI Chan 23 N64°48.00' W148°00.72' 077° 16.2 NM to fld. 1526/21E.

TACAN AZIMUTH unusable:

065°-100° byd 30 NM

270°-330° byd 10 NM blo 10,000'

270°-330° byd 30 NM

COMM/NAV/WEATHER REMARKS: For a toll free call to Fairbanks FSS dial 1-866-248-6516, for a local call to Fairbanks FSS dial 907-474-0137.

