

TAMGAS HARBOR SPB (Z43) 2 NE UTC-9(-8DT) N55°04.08' W131°33.42'

KETCHIKAN

00 NOTAM FILE KTN

WATERWAY NW-SE: 10560X1500 (WATER)

SEAPLANE REMARKS: Unattended. Rock jetty, dock available. Call police department at 907-886-4011 or VHF Channel 80 prior to landing at strip or SPB. Be alert many divers and boaters in the area.

AIRPORT MANAGER: (907) 886-4011

COMMUNICATIONS: CTAF 122.9

RADIO AIDS TO NAVIGATION: NOTAM FILE ANN.

ANNETTE ISLAND (H) (H) VOR/DME 117.1 ANN Chan 118

N55°03.62' W131°34.70' at fld. 184/21E.

VOR unusable:

000°-100° byd 11 NM blo 12,000'

000°-100° byd 15 NM

000°-100° byd 9 NM blo 6,500'

120°-130° byd 37 NM blo 6,000'

290°-320° byd 32 NM blo 7,000'

290°-320° byd 37 NM blo 9,000'

345°-000° byd 20 NM

DME unusable:

000°-100° byd 11 NM blo 12,000'

000°-100° byd 15 NM

000°-100° byd 9 NM blo 6,500'

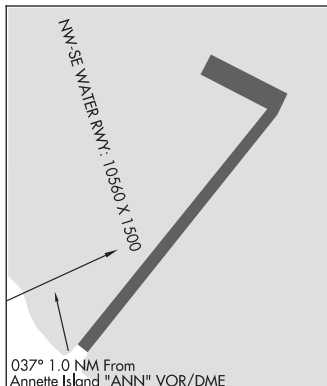
120°-130° byd 37 NM blo 6,000'

290°-320° byd 32 NM blo 7,000'

290°-320° byd 37 NM blo 9,000'

345°-000° byd 20 NM

COMM/NAV/WEATHER REMARKS: For a LC to Ketchikan FSS dial 225-9481. For a LC to Juneau FSS dial 789-7380.



ANVIK

ANVIK (ANV)(PANV) 1 SE UTC-9(-8DT) N62°38.84' W160°11.40'

297 B NOTAM FILE ANV

RWY 17-35: 4000X75 (GRVL) MIRL

RWY 17: REIL. PAPI(P4L)—GA 3.0° TCH 25'. Brush.

RWY 35: REIL. PAPI(P4L)—GA 3.0° TCH 25'. Brush.

SERVICE: LGT ACTIVATE MIRL Rwy 17-35, PAPI Rwy 17 & 35, REIL Rwy 17 & 35—122.7.

AIRPORT REMARKS: Unattended. Rwy condition not monitored, recommend visual inspection prior to landing. 77' trees 200' east of windssock may result in erroneous wind indications.

AIRPORT MANAGER: 907-438-2416

WEATHER DATA SOURCES: AWOS-3P 133.55 (907) 663-6353. (WX CAM)

COMMUNICATIONS: CTAF/UNICOM 122.7

RCO 122.4 (KENAI RADIO)

Ⓡ **ANCHORAGE CENTER APP/DEP CON** 135.7

RADIO AIDS TO NAVIGATION: NOTAM FILE ANV.

NDB (HW) 365 ANV N62°38.49' W160°11.12' at fld. 318/15E.

COMM/NAV/WEATHER REMARKS: For a toll free call Kenai FSS dial 1-866-864-1737.

MC GRATH
H-1B, 2I, L-3C
IAP

