

**DETROIT/GROSSE ILE****GROSSE ILE MUNI** (ONZ)(KONZ) 2 S UTC-5(-4DT) N42°05.94' W83°09.69'

591 B NOTAM FILE ONZ

**RWY 04-22:** H4846X100 (ASPH) S-66, D-83, 2D-105 MIRL

0.3% up NE

**RWY 04:** REIL. PAPI(P4L)—GA 3.04° TCH 40'. Tree. Rgt tfc.**RWY 22:** REIL. PAPI(P4L)—GA 3.04° TCH 40'. Thld dspcd 428'. Trees.**RWY 17-35:** H4424X75 (CONC) S-40, D-55, 2D-90 MIRL**RWY 17:** PAPI(P4L)—GA 3.0° TCH 26'. Thld dspcd 672'. Trees.**RWY 35:** PAPI(P4L)—GA 3.0° TCH 20'. Rgt tfc.**SERVICE:** S4 FUEL 100LL, JET A LGT Actvt REIL Rwy 04 & 22; PAPI Rwy 04, 22, 17, & 35; MIRL Rwy 04-22 & 17-35—CTAF.**AIRPORT REMARKS:** Attended Mon-Fri 1300-2300Z†, Sat-Sat prior arngmt. Birds and deer on and invof arpt. Ultralight & pwrld prcht act invof arpt. Arpt clsd to acr ops grtr than 30 pax seats exc PPR call amgr. Rwy 17-35 extsv peeling & cracking—FOD hazard.**AIRPORT MANAGER:** 734-675-0155**WEATHER DATA SOURCES:** AWOS-3 119.675 (734) 692-9686.**COMMUNICATIONS:** CTAF/UNICOM 123.0

CARLETON RCO 122.1R 115.7T (LANSING RADIO)

Ⓡ DETROIT APP/DEP CON 134.3

**CLEARANCE DELIVERY PHONE:** For CD ctc Detroit Apch at 734-955-1404.**RADIO AIDS TO NAVIGATION:** NOTAM FILE LAN.**CARLETON (VH) (DH) VOR/DME** 115.7 CRL Chan 104 N42°02.88' W83°27.45' 080° 13.6 NM to fld. 628/3W.

VOR unusable:

000°-019° blo 5,000'

020°-030° byd 13 NM blo 5,000'

020°-030° byd 40 NM

031°-040° blo 5,000'

041°-050° byd 25 NM blo 8,000'

041°-083° byd 40 NM

084°-104° byd 40 NM blo 18,000'

105°-191° byd 40 NM

192°-202° byd 40 NM blo 18,000'

203°-261° byd 40 NM

255°-335° byd 30 NM blo 8,000'

262°-278° byd 40 NM blo 18,000'

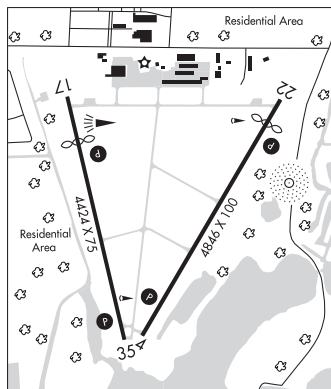
279°-294° byd 40 NM

295°-305° byd 40 NM blo 18,000'

306°-359° byd 40 NM

**NDB (MHW)** 419 RYS N42°06.07' W83°09.18' at fld.

576/7W. NOTAM FILE ONZ.

**COMM/NAV/WEATHER REMARKS:** For CD ctc Detroit Apch at 734-955-1404.**DETROIT  
COPTER  
L-281, A  
IAP****DEXTER****CACKLEBERRY** (2E8) 5 N UTC-5(-4DT) N42°25.51' W83°52.11'

898 NOTAM FILE LAN

**RWY 06-24:** 2113X100 (TURF) 0.6% up NE**RWY 06:** Thld dspcd 515'. Trees.**RWY 24:** Thld dspcd 500'. Tree.**AIRPORT REMARKS:** Unattended. Birds and deer invof rwy. Rwy 06-24 CLOSED when snow covd. For rwy conds call amgr. Rwy 24 3' yellow cones dthr mkd with 3' wide gnd lvl conc stones. 75' trees in pri sfc, SE edge of rwy, may obst line of sight to Rwy 24 dthr.**AIRPORT MANAGER:** 734-424-3437**COMMUNICATIONS:** CTAF 122.9**CLEARANCE DELIVERY PHONE:** For CD ctc Detroit Apch at 734-955-1404.**DETROIT  
COPTER**