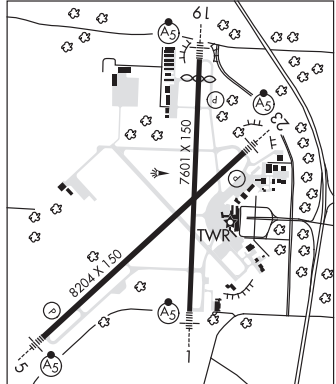


AKRON—CANTON RGNL (CAK)(KCAK) P (ARNG) 10 SE UTC-5(-4DT) N40°54.90' W81°26.62'
 1226 B LRA ARFF Index—See Remarks NOTAM FILE CAK MON Airport
RWY 05-23: H8204X150 (ASPH-GRVD) S-120, D-160, 2S-175,
 2D-250 PCN 133F/C/X/T HIRL

DETROIT
H-10G, L-29B
IAP, AD

RWY 05: MALSR. PAPI(P4L)—GA 3.0° TCH 50'. RVR-TR 0.5% up.
RWY 23: MALSR. PAPI(P4L)—GA 3.0° TCH 47'. RVR-TR 0.6% down.
RWY 01-19: H7601X150 (ASPH-GRVD) S-120, D-160, 2S-175,
 2D-250 PCN 85 F/C/X/T HIRL
RWY 01: MALSR. RVR-TR
RWY 19: MALSR. PAPI(P4L)—GA 3.0° TCH 53'. RVR-TR Thld dsplcd 601'.



LAND AND HOLD—SHORT OPERATIONS

LDG RWY	HOLD—SHORT POINT	AVBL LDG DIST
RWY 05	01-19	5723
RWY 19	05-23	3100

RUNWAY DECLARED DISTANCE INFORMATION

RWY 01: TORA-7601 TODA-7601 ASDA-7007 LDA-7007
RWY 05: TORA-8204 TODA-8204 ASDA-8204 LDA-8204
RWY 19: TORA-7601 TODA-7601 ASDA-7601 LDA-7007
RWY 23: TORA-8204 TODA-8204 ASDA-8204 LDA-8204

SERVICE: S4 FUEL 100LL, JET A OX 1, 2 MILITARY— FUEL A, A+ (C330-494-6104) (NC-100LL).

AIRPORT REMARKS: Attended continuously. All acft taxiing on Air Camis

Ramp and north hangar areas not visible from twr. Deer and birds on and invof arpt. Class I, ARFF Index B, ARFF svc not avbl 0100-0500 local (0600-1000Z±) daily. One hour PPR for unsked air carrier ops, call arpt manager 330-499-4059. Twy E east of Twy B clsd to acft over 118' wingspan. Non-commercial landing fee: multi-engine only. Flight Notification Service (ADCUS) avbl.

AIRPORT MANAGER: 330-754-5233

WEATHER DATA SOURCES: ASOS (330) 493-5260

COMMUNICATIONS: ATIS 121.05 UNICOM 122.95

Ⓡ CLEVELAND APP/DEP CON 118.6 (187°-006°) 125.5 (007°-186°) (1100-0600Z±)

Ⓡ CLEVELAND CENTER APP/DEP CON 134.9 (0600-1100Z±) ctc Cleveland ARTCC at 440-774-0223.

TOWER 134.75 GND CON 121.7 CLNC DEL 132.05

ARNG OPS 40.1 138.55 226.9

CLEARANCE DELIVERY PHONE: For CD ctc Cleveland ARTCC at 440-774-0223.

AIRSPACE: CLASS C svc ctc APP CON svc 1100-0600Z±; other times CLASS D.

VOR TEST FACILITY (VOT) 110.6

RADIO AIDS TO NAVIGATION: NOTAM FILE CAK.

(L) (L) VORW/DME 114.4 ACO Chan 91 N41°06.47' W81°12.09' 228° 16.0 NM to fld. 1197/4W.

DME unusable:

Byd 10 NM

ILS 109.5 I-CAK Rwy 01. Class IA.

ILS/DME 108.3 I-EQX Chan 20 Rwy 05. Class IE.

ILS 109.5 I-RGO Rwy 19. Class IE.

ILS/DME 108.3 I-GGZ Chan 20 Rwy 23. Class IE. DME unusable byd 3° r of course.

MAYFIELD (1D4) 5 SE UTC-5(-4DT) N40°59.55' W81°25.91'

DETROIT

1100 NOTAM FILE CLE

RWY 09-27: 2315X110 (TURF) 0.3% up E

RWY 09: Thld dsplcd 180'. Trees.

RWY 27: Thld dsplcd 590'. Trees. Rgt tfc.

AIRPORT REMARKS: Attended irregularly. Deer, birds, and wildlife on and invof airport. Rwy 09-27 rolling trrn, Rwy 27 upslope

W end 12' higher than E end. Open to the public, wx and conds pmtg, ldg fees. No prkg, fees may apply. No UAS, or similar acft pmtd. No unauthorized vehicles, no trespassing. Rwy 09-27 mkd with tires at rwy end and dthr only.

AIRPORT MANAGER: 330-699-3066

COMMUNICATIONS: CTAF 122.9

CLEARANCE DELIVERY PHONE: For CD ctc Cleveland Apch at 216-352-2323, when Apch clsd ctc Cleveland ARTCC at 440-774-0223.

ALDERMAN (See ST CLAIRSVILLE on page 312)

ALEXANDER SALAMON (See WEST UNION on page 325)