

## CAHOKIA/ST LOUIS

**ST LOUIS DOWNTOWN** (CPS)(KCPS) 1 E UTC-6(-5DT) N38°34.22' W90°09.31'

413 B ARFF Index—See Remarks NOTAM FILE CPS

**RWY 12R-30L:** H7002X150 (ASPH-GRVD) S-65, D-95, 2S-160,

2D-175 PCN 48 F/D/X/T HIRL

**RWY 12R:** REIL. PAPI(P4L)—GA 3.0° TCH 49'. Tree. Rgt tfc.

**RWY 30L:** MALSR. PAPI(P4L)—GA 3.0° TCH 53'. Pole.

**RWY 12L-30R:** H5301X75 (CONC) S-30, D-30 PCN 10 F/D/X/T MIRL

**RWY 12L:** REIL. Tree.

**RWY 30R:** REIL. Tree. Rgt tfc.

**RWY 05-23:** H2799X75 (ASPH) S-12 PCN 11 R/C/W/T MIRL

**RWY 05:** Tree.

**RWY 23:** Tower.

**RUNWAY DECLARED DISTANCE INFORMATION**

**RWY 05:** TORA-2799 TODA-2799 ASDA-2799 LDA-2799

**RWY 12L:** TORA-5300 TODA-5300 ASDA-5300 LDA-5300

**RWY 12R:** TORA-7002 TODA-7002 ASDA-7002 LDA-7002

**RWY 23:** TORA-2799 TODA-2799 ASDA-2799 LDA-2799

**RWY 30L:** TORA-7002 TODA-7002 ASDA-7002 LDA-7002

**RWY 30R:** TORA-5300 TODA-5300 ASDA-5300 LDA-5300

**SERVICE:** S4 FUEL 100LL, JET A OX1 LGT ACTIVATE MALSR Rwy

30L when twr clsd—CTAF. REIL Rwy 30R—CTAF. HIRL Rwy

12R-30L preset on med ints when twr clsd. MIRL Rwy 12L-30R not

avbl when twr clsd.

**AIRPORT REMARKS:** Attended continuously. Migratory waterfowl on and invof arpt. Be alert: intensive student training and helicopter operations. Sfc conds not mntd 0300-1300Z†. Rwy 12R-30L 2D-200 with PPR. Class IV, ARFF Index A. Clsd to sked acr ops grtr than 9 psgr seats. Unsked acr ops grtr than 30 psgr seats rqr 12 hr PPR. Mon-Sun (1300-0300Z†) other times by req 618-337-6060. After hrs ctc 618-646-8263. Rwy 05-23 not avbl for unscheduled acr at least 31 pasgr seats excp taxi. Rwy 12L-30R not avbl for unscheduled acr at least 31 pasgr seats excp taxi. All twys excp Twy B4 PPR acft over 120,000 lbs. Rwy 05 and 23 sfc markings faded.

**AIRPORT MANAGER:** 618-337-6060

**WEATHER DATA SOURCES:** ASOS (618) 332-0001 LAWRS.

**COMMUNICATIONS:** CTAF 119.925 ATIS 121.45 UNICOM 122.95

® **SAINT LOUIS APP/DEP CON** 123.7

**DOWNTOWN TOWER** 119.925 (1230-0400Z†) **GND CON** 121.8 **CLNC DEL** 118.275 (121.8 when twr clsd)

**AIRSPACE:** CLASS D svc 1230-0400Z†; other times CLASS G.

**RADIO AIDS TO NAVIGATION:** NOTAM FILE STL.

**TROY (L) (L) VORTACW** 116.0 TOY Chan 107 N38°44.35' W89°55.12' 224° 15.0 NM to fld. 576/4E.

TACAN AZIMUTH unusable:

255°-270°

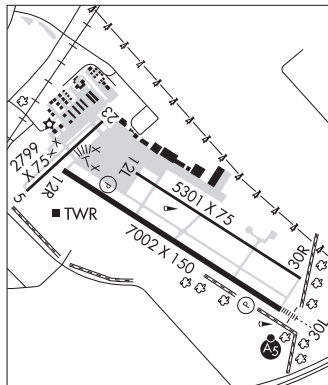
300°-310°

**ACORE NDB (LOMW)** 350 CP N38°31.19' W90°03.56' 304° 5.4 NM to fld. 550/0E. NOTAM FILE CPS.

**ILS 109.1** I-CPS Rwy 30L. Class IA. LOM ACORE NDB. LOC unmonitored when ATCT closed. LOC unusable by

14° rgt of course. OM unmonitored when ATCT closed.

**COMM/NAV/WEATHER REMARKS:** Emerg frequency 121.5 not avbl at twr.



**ST LOUIS**

H-5D, L-27C, A

IAP, AD