

LAWRENCEVILLE-VINCENNES INTL (LWV)(KLWV) 3 NE UTC-6(-5DT) N38°45.86' W87°36.33'

ST LOUIS

430 B TPA—See Remarks NOTAM FILE LWV

H-5E, L-27D

RWY 18-36: H5199X100 (ASPH) S-75, D-100, 2D-180 MIRL

RWY 18: REIL. PVASI(P5IL)—GA 3.0° TCH 25'.

RWY 36: REIL. PAPI(P4L)—GA 3.0° TCH 41'.

RWY 09-27: H5198X100 (ASPH) S-75, D-100, 2D-180 MIRL

RWY 09: REIL. PVASI(P5IL)—GA 3.0° TCH 26'.

RWY 27: ODALS. REIL. PAPI(P4L)—GA 3.0° TCH 26'.

RWY 04U-22U: 1000X200 (TURF)

RWY 22U: Rgt ttc.

SERVICE: S4 **FUEL** 100LL, JET A **LGT** ACTIVATE ODALS Rwy 27; REIL

Rwy 09, 27, 18 and 36; PAPI Rwy 36; MIRL Rwy 09-27—CTAF.

MIRL Rwy 18-36 preset on low instst to incr instst—CTAF. BE ALERT:

ODALS for Rwy 27 are in operation simultaneously with REILS on Rwy

18. Rwy 09 and Rwy 18 PVASI unusable byd 8° left of centerline and

byd 6° right of centerline.

AIRPORT REMARKS: Attended Mon-Fri 1300-0000Z‡, Sat-Sun

1500-2300Z‡. Glider activity SR-SS. Rwy 09-27 and Rwy 18-36

have left hand ttc pattern for glider acft. Traffic pattern indicators on

sod Rwy 04U-22U. TPA—Rwy 09-27 and Rwy 18-36 1330 (900)

powered acft, Rwy 04U-22U 930 (500) max ultralights.

AIRPORT MANAGER: 618-943-5733

WEATHER DATA SOURCES: ASOS 118.0 (618) 943-5252.

COMMUNICATIONS: CTAF/UNICOM 122.8

Ⓡ **EVANSVILLE APP/DEP CON** 125.6 (1200-0500Z‡)

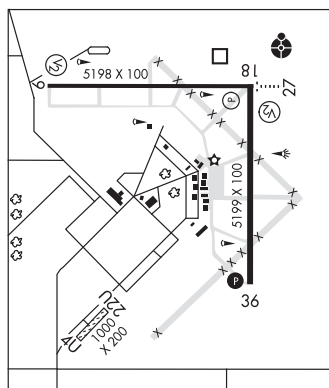
Ⓡ **INDIANAPOLIS CENTER APP/DEP CON** 128.3 (0500-1200Z‡)

CLEARANCE DELIVERY PHONE: For CD when rco 125.6 ots, ctc Evansville Apch at 812-436-4689, when Apch clsd ctc

Indianapolis ARTCC at 317-247-2411.

RADIO AIDS TO NAVIGATION: NOTAM FILE LWV.

(T) DME 108.8 LWV Chan 25 N38°46.19' W87°36.23' at fld. 430.



LEWIS UNIVERSITY (See CHICAGO/ROMEDEVILLE on page 51)

LICOL N39°54.71' W89°36.19' NOTAM FILE STL.

ST. LOUIS

NDB (LOMW) 375 LQ 221° 5.3 NM to Abraham Lincoln Capital. 579/1W.