

WESTPORT (71K) 3 SW UTC-6(-5DT) N37°38.86' W97°23.02'

WICHITA

1290 NOTAM FILE ICT

RWY 17-35: H2520X30 (ASPH) S-3

RWY 17: Thld dsplcd 400'. Bldg.

RWY 35: P-line. Rgt tfc.

SERVICE: S4 FUEL 100LL

AIRPORT REMARKS: Attended dalglt hours. Departures ctc Wichita twr on the ground on frequency 125.7 for departure instructions. If unable—ctc twr on frequency 118.2 upon departure and remain east of the fld until communications are established. Rwy 17-35 has grass encroaching on rwy sides numerous surface cracks.

AIRPORT MANAGER: 316-943-5510

COMMUNICATIONS: CTAF 122.9

CLEARANCE DELIVERY PHONE: For CD ctc Wichita Apch at 316-350-1520.

WESTPORT AUXILIARY (72K) 5 SW UTC-6(-5DT) N37°36.25' W97°21.53'

WICHITA

1272 NOTAM FILE ICT

RWY 17-35: 2550X50 (TURF)

RWY 17: P-line.

RWY 35: Trees.

AIRPORT REMARKS: Unattended. Road crosses north end Rwy 17-35; 775' from AER 17 large ridge at crossing. Crops both sides of Rwy 17-35. Edge drop off along east edge Rwy 17-35. 20' tree 70' right Rwy 35 near mid fld. Rwy 17-35 surface rough and bumpy. If conditions favorable, balloon traffic in area.

AIRPORT MANAGER: 316-943-5510

COMMUNICATIONS: CTAF 122.9

CLEARANCE DELIVERY PHONE: For CD ctc Wichita Apch at 316-350-1520.

WICHITA DWIGHT D EISENHOWER NTL (ICT)(KICT) 5 SW UTC-6(-5DT) N37°39.00'

WICHITA

W97°25.98'

H-5C, L-101, 15D
IAP, AD

1333 B LRA Class I, ARFF Index C NOTAM FILE ICT

RWY 01L-19R: H10302X150 (CONC-GRVD) S-100, D-210, 2S-175,

2D-300 PCN 72 R/B/W/T HIRL CL

RWY 01L: ALSF2. TDZL. RVR-TMR

RWY 19R: MALSR. RVR-TMR Rgt tfc.

RWY 01R-19L: H7302X150 (CONC-GRVD) S-125, D-240, 2D-400

PCN 66 R/B/W/T HIRL

RWY 01R: MALSR. RVR-TR Rgt tfc.

RWY 19L: MALSR. PAPI(P4L)—GA 3.0° TCH 55'. RVR-TR

RWY 14-32: H6301X150 (CONC-GRVD) S-100, D-190, 2S-175,

2D-280 PCN 72 R/B/W/T HIRL

RWY 14: REIL. PAPI(P4L)—GA 3.0° TCH 50'.

RWY 32: REIL. PAPI(P4L)—GA 3.0° TCH 53'.

RUNWAY DECLARED DISTANCE INFORMATION

RWY 01L:TORA-10301 TODA-10301 ASDA-10301 LDA-10301

RWY 01R:TORA-7302 TODA-7302 ASDA-7302 LDA-7302

RWY 14: TORA-6301 TODA-6301 ASDA-6301 LDA-6301

RWY 19L:TORA-7302 TODA-7302 ASDA-7302 LDA-7302

RWY 19R:TORA-10301 TODA-10301 ASDA-10301 LDA-10301

RWY 32: TORA-6301 TODA-6301 ASDA-6301 LDA-6301

SERVICE: S4 FUEL 100LL, JET A OX 1, 2, 3, 4

AIRPORT REMARKS: Attended continuously. Migratory birds on and in vicinity of arpt, all quads. PPR required for acft carrying Class 1—Division 1.1, 1.2 or 1.3 explosives as defined by 49 CFR 173.50 or as amended. ATCT has ltd vis of trml Gates 1 thru 8, Twy H, and customs prkg ramp. Aircraft engine runs above idle not approved on aircraft parking ramps. Call for gate pushback not required. Twys F, G, H, J, P and all acft parking ramps are nonmovement areas. Twy H clsd to acft with wingspan more than 79'. Twy L and L1 clsd to acft with wingspan more than 118'. Twy P clsd to acft with wingspan more than 79'. Air cargo ramp clsd to acft wingspan more than 148'. Acft parking BAS contact 132.00 for parking instructions prior to exiting Twy L1. Flight Notification Service (ADCUS) avbl.

AIRPORT MANAGER: 316-946-4700

WEATHER DATA SOURCES: ASOS (316) 945-8022 TDWR.

COMMUNICATIONS: ATIS 125.15 (316) 350-1528 UNICOM 122.95

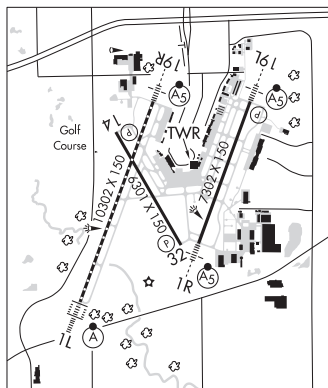
RCO 122.2 (WICHITA RADIO)

Ⓡ APP CON 125.5 134.85 (010°-190°) 126.7 (191°-009°) 125.5 (270°-009° blo 5000' and byd 20 NM).

Ⓡ APP/DEP CON 134.85 (010°-190°) 126.7 (191°-009°)

TOWER 118.2 GND CON 121.9 CLNC DEL 125.7

AIRSPACE: CLASS C svc ctc APP CON.



CONTINUED ON NEXT PAGE

CONTINUED FROM PRECEDING PAGE

VOR TEST FACILITY (VOT) 114.0

RADIO AIDS TO NAVIGATION: NOTAM FILE ICT.

(H) (H) VORTACW 113.8 ICT Chan 85 N37°44.72' W97°35.03' 121° 9.2 NM to fld. 1472/7E.

TACAN AZIMUTH unusable:

025°-035° blo 4,000'

040°-055° byd 20 NM

147°-159° blo 4,900'

VOR unusable:

025°-035° blo 4,000'

147°-159° blo 4,400'

PICHE NDB (HW/LOM) 332 IC N37°34.69' W97°27.35' 010° 4.4 NM to fld. 1315/4E.

ILS 109.1 I-TWI Rwy 01L. Class IIE.

ILS/DME 110.3 I-ICT Chan 40 Rwy 01R. Class IA. LOM PICHE NDB. DME unusable byd 32 degrees left of centerline.

ILS/DME 111.55 I-MVP Chan 52(Y) Rwy 19L. Class IE.

ILS 110.5 I-HOV Rwy 19R. Class IE.

COMM/NAV/WEATHER REMARKS: Emerg frequency 121.5 not avbl at FSS.

WINFIELD/ARKANSAS CITY

STROTHER FLD (WLD)(KWLD) 5 SW UTC-6(-5DT) N37°10.12' W97°02.25'

1160 B NOTAM FILE WLD

RWY 17-35: H5506X100 (ASPH) S-45, D-60 PCN 16 F/D/X/T HIRL

RWY 17: REIL. PAPI(P4L)—GA 3.0° TCH 40'.

RWY 35: REIL. PAPI(P4L)—GA 3.0° TCH 54'.

RWY 13-31: H3137X75 (ASPH) S-28, D-48 MIRL 0.3% up NW

SERVICE: FUEL 100LL, JET A LGT ACTIVATE MIRL Rwy 13-31; HIRL

Rwy 17-35; PAPI Rwy 17 and Rwy 35; REIL Rws 17 and 35—CTAF.

AIRPORT REMARKS: Attended Mon-Fri 1400-2230Z±. Credit card Jet A and

100LL fuel avbl 24 hrs. Pilot lounge key code 1228.

AIRPORT MANAGER: 620-221-9280

WEATHER DATA SOURCES: ASOS 118.025 (620) 221-9121.

COMMUNICATIONS: CTAF/UNICOM 122.8

RCO 122.5 (WICHITA RADIO)

Ⓡ KANSAS CITY CENTER APP/DEP CON 127.8

RADIO AIDS TO NAVIGATION: NOTAM FILE PNC.

PIONEER (VH) (H) VORTACW 113.2 PER Chan 79 N36°44.79'

W97°09.61' 007° 26.0 NM to fld. 1054/6E.

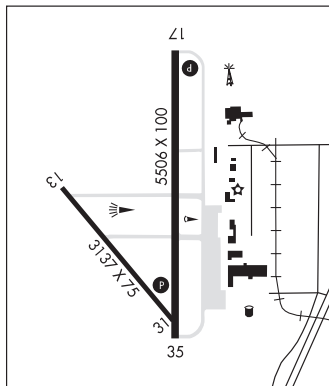
TACAN AZIMUTH unusable:

184°-194° byd 15 NM blo 3,000'

WICHITA

H-6H, L-15D

IAP



YATES CENTER MUNI (3JA) 2 SSW UTC-6(-5DT) N37°51.28' W95°44.87'

1128 NOTAM FILE ICT Not insp.

RWY 18-36: 3000X150 (TURF)

RWY 18: Rgt t/c.

AIRPORT MANAGER: 210-876-0000

COMMUNICATIONS: CTAF 122.9

KANSAS CITY