

**WAYNESVILLE—ST ROBERT RGNL FORNEY FLD** (TBN)(KTBN) MIL/CIV A 0 SW UTC-6(-5DT)

KANSAS CITY

H-5D, L-16G

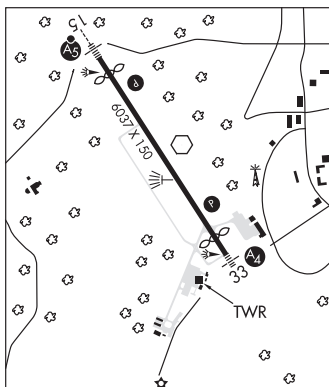
IAP, AD

N37°44.50' W92°08.44'

1160 B Class II, ARFF Index A NOTAM FILE TBN

**RWY 15-33:** H6037X150 (ASPH) PCN 54 F/A/W/T HIRL**RWY 15:** MALSR. REIL. PAPI(P4L)—GA 3.0° TCH 50'. RVR-R Thld dspclcd 502'. Pole.**RWY 33:** MALSR. REIL. PAPI(P4R)—GA 3.0° TCH 36'. RVR-T Thld dspclcd 527'. Road. Rgt tfc.**SERVICE:** **FUEL** 100LL, JET A **LGT** When twr clsd ACTVT MALS Rwy 33; MALSR Rwy 15; REIL Rwy 15 and 33; PAPI Rwy 15 and 33; HIRL Rwy 15-33—CTAF. **MILITARY—FUEL** No Mil Fuel Avbl. CIV: NC A — avbl 1400-2300Z† OT C573-329-4216. 100LL avbl 24 hr with credit card.**AIRPORT REMARKS:** Attended Mon-Fri 1400-2300Z†. Excluding hols.

Surface visibility limited by tree line from east to south to west. Arr and dep lrg acft must use the Alpha Twy int at the SE EOR 15-33 to aces and exit the rwy. Arr and dep lrg acft are required to back-taxi on the rwy.

**MILITARY REMARKS:** Opr 1300-0400Z† Mon-Fri exc hol. **CAUTION** South end of rwy safety zone unprotected when twr clsd. **RSTD** PPR for all transient military acft DSN 581-0165/4819, C573-596-0165/4819. Civ FBO ramp clsd to mil acft. **MISC** Wx svc avbl Mon-Fri exc hol 1300-0400Z†. AN/FMQ-19 automated observing sys in use, augmented by human obsn when necessary during afld hrs. OT remote briefing svc avbl 26 OWS Barksdale AFB DSN 781-4775, C318-456-4775, C866-223-2398 (toll free).**AIRPORT MANAGER:** 573-596-0165**WEATHER DATA SOURCES:** ASOS 118.7. Frequency: 229.4**COMMUNICATIONS:** CTAF 125.4 D-ATIS 118.7 229.4Ⓡ **KANSAS CITY CENTER APP/DEP CON** 128.35 284.675**FORNEY TOWER** 125.4 268.7 (1300-0400Z† Mon-Fri except holidays) **GND CON** 123.75 256.8**FORNEY OPS** 122.95 237.5 **ARRG OPS** 32.125 140.2 245.7**CLEARANCE DELIVERY PHONE:** When ATCT clsd, for CD ctc Kansas City ARTCC at 913-254-8508.**AIRSPACE:** CLASS D svc 1300-0400Z† Mon-Fri exc hol; other times CLASS G.**RADIO AIDS TO NAVIGATION:** NOTAM FILE TBN.**FORNEY (L) VORW** 110.0 TBN N37°44.55' W92°08.34' at fld. 1155/0E. VOR unmonitored when twr clsd.**ILS/DME** 110.9 I-TBN Chan 46 Rwy 15. Unmonitored when twr clsd. ILS classificaton code ie.**WEST PLAINS RGNL** (UNO)(KUNO) 10 NW UTC-6(-5DT) N36°52.71' W91°54.16'

KANSAS CITY

H-6J, L-16G

IAP

1228 B NOTAM FILE UNO

**RWY 18-36:** H5101X75 (ASPH) S-30, D-39 MIRL**RWY 18:** REIL. PAPI(P2L)—GA 3.0° TCH 37'.**RWY 36:** REIL. PAPI(P2L)—GA 3.0° TCH 37'.**SERVICE:** **FUEL** 100LL, JET A **LGT** ACTIVATE MIRL Rwy 18-36, PAPI Rwy 18 and Rwy 36 and REIL Rwy 18 and 36 after 0400Z†—CTAF.**AIRPORT REMARKS:** Attended 1400-2300Z†. For attendant after 2300Z† call 417-257-1539 or 417-274-4043. Helicopter ops on and invof arpt. Ultralights on and in vicinity of arpt.**AIRPORT MANAGER:** 417 372-3997**WEATHER DATA SOURCES:** ASOS 123.825 (417) 257-1313.**COMMUNICATIONS:** CTAF/UNICOM 122.8

RCO 122.4 (COLUMBIA RADIO)

Ⓡ **MEMPHIS CENTER APP/DEP CON** 120.075**CLEARANCE DELIVERY PHONE:** For CD ctc Memphis ARTCC at 901-368-8453/8449.**RADIO AIDS TO NAVIGATION:** NOTAM FILE UNO.**HUTTON (L) DME** 111.6 HUW Chan 53 N36°52.28'

W91°54.00' at fld. 1222.

