

**CHADRON MUNI** (CDR)(KCDR) 4 W UTC-7(-6DT) N42°50.25' W103°05.72'

CHEYENNE

3298 B NOTAM FILE CDR

H-5A, L-12G

**RWY 03-21:** H5998X100 (CONC) S-30, D-55, 2D-90

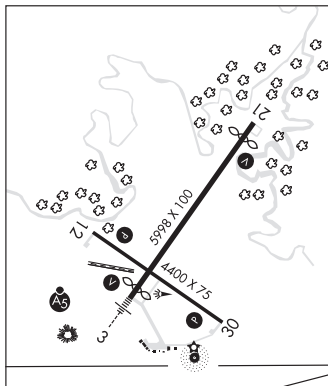
IAP

PCN 12 R/B/W/T HIRL 0.5% up SW

**RWY 03:** MALSR. VASI(V4L)—GA 3.0° TCH 61'. Thld dsplcd 289'.**RWY 21:** REIL. VASI(V4L)—GA 3.0° TCH 41'. Thld dsplcd 498'.  
Brush.**RWY 12-30:** H4400X75 (CONC) S-21, D-30 PCN 10 R/B/W/T MIRL**RWY 12:** PAPI(P4L)—GA 3.0° TCH 29'. Trees.**RWY 30:** REIL. PAPI(P4L)—GA 3.0° TCH 41'. Road.**RUNWAY DECLARED DISTANCE INFORMATION****RWY 03:** TORA-5998 TODA-5998 ASDA-5500 LDA-5211**RWY 12:** TORA-4400 TODA-4400 ASDA-4400 LDA-4400**RWY 21:** TORA-5998 TODA-5998 ASDA-5500 LDA-5500**RWY 30:** TORA-4400 TODA-4400 ASDA-4400 LDA-4400**SERVICE:** S4 FUEL 100LL, JET A LGT ACTIVATE HIRL Rwy 03-21 and  
MIRL Rwy 12-30, REIL Rwy 21 and Rwy 30, PAPI Rwy 12-30, VASI  
Rwy 03-21 and MALSR Rwy 03 —CTAF.**AIRPORT REMARKS:** Attended 1500-2300Z‡.**AIRPORT MANAGER:** 308-432-0505**WEATHER DATA SOURCES:** ASOS 118.05 (308) 432-5574.**COMMUNICATIONS:** CTAF/UNICOM 122.8

RCO 122.5 (COLUMBUS RADIO)

® DENVER CENTER APP/DEP CON 127.95

**CLEARANCE DELIVERY PHONE:** For CD if una to ctc on FSS freq, ctc Denver ARTCC at 303-651-4257.**AIRSPACE:** CLASS E svc 1300-0600Z‡ Mon-Fri, 1500-0600Z‡ Sat-Sun; other times CLASS G.**RADIO AIDS TO NAVIGATION:** NOTAM FILE CDR.**TOADSTOOL (VL) (DH) VOR/DME** 113.4 TST Chan 81 N42°33.53' W103°18.73' 017° 19.3 NM to fld. 4630/13E.**WHITNEY NDB (MHW)** 275 HIN N42°49.73' W103°05.62' at fld. 3308/7E.**DAWES NDB (LOMW)** 362 CD N42°45.31' W103°10.48' 028° 6.1 NM to fld. 3511/7E.**ILS** 110.9 I-CDR Rwy 03. Class IE. LOM DAWES NDB.**CHAPPELL****BILLY G RAY FLD** (CNP)(KCNP) 1 S UTC-7(-6DT) N41°04.65' W102°27.84'

CHEYENNE

3682 B NOTAM FILE OLU

L-10G, 12G

**RWY 12-30:** H4000X55 (ASPH) S-15 PCN 72 F/D/Z/T MIRL

IAP

**RWY 12:** Road.**RWY 30:** Thld dsplcd 130'. Road.**SERVICE:** FUEL 100LL LGT MIRL Rwy 12-30 preset low ints, to  
increase ints ACTIVATE—CTAF.**AIRPORT REMARKS:** Unattended. Rwy 12-30 severe block cracking and FOD  
throughout pvmt.**AIRPORT MANAGER:** 308-874-4350**COMMUNICATIONS:** CTAF 122.9

® DENVER CENTER APP/DEP CON 118.475

**CLEARANCE DELIVERY PHONE:** For CD ctc Denver ARTCC at 303-651-4257.**RADIO AIDS TO NAVIGATION:** NOTAM FILE SNY.**SIDNEY (VH) (DH) VOR/DME** 115.9 SNY Chan 106 N41°05.80'

W102°58.98' 080° 23.6 NM to fld. 4289/13E.

VOR unusable:

160°-165° byd 40 NM

230°-247° byd 40 NM blo 22,000'

248°-260° byd 40 NM

**CHAPPELL NDB (MHW)** 383 CNP N41°04.60'W102°27.53' at fld. 3671/10E. NOTAM FILE OLU.  
unmonitored.