

RANDALL (See MIDDLETOWN on page 219)

RENSSELAER CO (See TROY on page 250)

REPUBLIC (See FARMINGDALE on page 201)

ROCHESTER

FREDERICK DOUGLASS/GREATER ROCHESTER INTL (ROC)(KROC) P (ARNG) 3 SW

DETROIT

UTC-5(-4DT) N43°07.15' W77°40.31'

H-10H, 11C, 12I, L-31E, 32F

559 B TPA—See Remarks AOE Class I, ARFF Index C NOTAM FILE ROC

IAP, AD

RWY 04-22: H8001X150 (ASPH-GRVD) S-126, D-160, 2D-265

PCN 55 R/C/X/T HIRL CL

RWY 04: ALSF2. TDZL. RVR-TR Trees. 0.3% up.

RWY 22: MALS.R. PAPI(P4L)—GA 3.0° TCH 67'. RVR-TR Tree. Rgt tfc. 0.5% down.

RWY 10-28: H6402X150 (ASPH-GRVD) S-126, D-160, 2D-265

PCN 47 R/C/X/T HIRL

RWY 10: REIL. PAPI(P4L)—GA 3.0° TCH 53'. RVR-TR Thld dsplcd 298'. Trees. Rgt tfc.

RWY 28: MALS.R. PAPI(P4L)—GA 3.0° TCH 57'. RVR-TR Thld dsplcd 600'. Trees.

RWY 07-25: H4000X100 (ASPH) S-32, D-42 PCN 95 F/C/X/T MIRL

RWY 07: REIL. Pole. Rgt tfc.

RWY 25: REIL. PAPI(P4R)—GA 3.0° TCH 40'. Tree.

RUNWAY DECLARED DISTANCE INFORMATION

RWY 04: TORA-8001 TODA-8001 ASDA-8001 LDA-8001

RWY 07: TORA-4000 TODA-4000 ASDA-4000 LDA-4000

RWY 10: TORA-6402 TODA-6402 ASDA-5802 LDA-5502

RWY 22: TORA-8001 TODA-8001 ASDA-8001 LDA-8001

RWY 25: TORA-4000 TODA-4000 ASDA-4000 LDA-4000

RWY 28: TORA-6402 TODA-6402 ASDA-6402 LDA-5802

ARRESTING GEAR/SYSTEM

RWY 28: EMAS

SERVICE: S4 FUEL 100LL, JET A, J8 OX 1, 2, 3, 4 LGT REIL Rwy 07, REIL Rwy 10 and Rwy 25 REIL controlled by twr but not monitored. PAPI Rwy 22, PAPI Rwy 10, Rwy 25 and Rwy 28 operate 24 hrs. **MILITARY—A-GEAR** Rwy 28 EMAS 368' x 160'. FUEL J8(Mil) (NC-100LL, A)

AIRPORT REMARKS: Attended continuously. J8 avbl for DoD acct. Birds, deer and coyote on and invof arpt. Be alert during ldg/tkf Rwy 25 and Rwy 28 thlds in close proximity to each other. No practice apchs or maintenance engine run-ups between 0400-1100Z±. +80' obstruction lgtd twr 1250' west of Rwy 04-22 centerline 1000' south of extdd centerline Rwy 10-28. Multiple unshielded lgts in final apch area Rwy 28. Terminal ramp is uncontrolled. Do not call for push/power back. Advise ground control when ready to taxi for departure. Twy F from Twy F1 to Rwy 07 clsd to acct with wingspan greater than 100'. Rwy 07-25 clsd to sked acr ops more than 9 pax seats and non sked acr ops more than 30 pax seats. TPA—1400(841) single engine, 2000(1441) multi-engine/turbojet/jet. Ldg fee. Flight Notification Service (ADCUS) avbl. NOTE: See Special Notices—Arrival Alert.

AIRPORT MANAGER: 585-753-7056

WEATHER DATA SOURCES: ASOS 124.825 (585) 235-7322. WSP.

COMMUNICATIONS: ATIS 124.825 UNICOM 122.95

ROCHESTER RCO 122.6 (BUFFALO RADIO)

Ⓡ APP/DEP CON 119.55 (330°-160°) 123.7 (161°-329°)

TOWER 118.3 GND CON 121.7 CLNC DEL 118.8 PRE TAXI CLNC 118.8

AIRSPACE: CLASS C svc ctc APP CON.

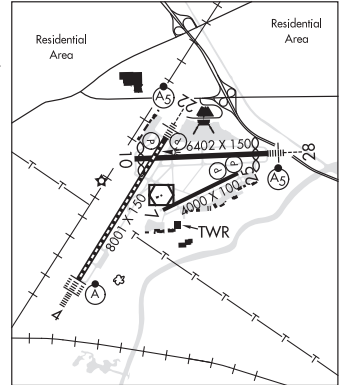
RADIO AIDS TO NAVIGATION: NOTAM FILE ROC.

ROCHESTER (L) (L) VORW/DME 110.0 ROC Chan 37 N43°07.08' W77°40.37' at fld. 545/12W.

ILS 110.7 I-MCU Rwy 04. Class IIE.

ILS 110.7 I-MWD Rwy 22. Class IT.

ILS/DME 109.5 I-ROC Chan 32 Rwy 28. Class IC.



ROCKDALE N42°27.98' W75°14.35' NOTAM FILE BUF.

NEW YORK

(L) (L) VORW/DME 112.6 RKA Chan 73 077° 8.5 NM to Albert S Nader Rgnl. 2032/11W.

H-10I, 11C, 12I, L-32F, 33A