

WASHINGTON DULLES INTL (IAD)(KIAD) 20 W UTC-5(-4DT) N38°56.85' W77°27.60'

WASHINGTON

COPTER

H-10H, 12I, L-29E, 34E, 36I, A IAP, AD

312 B LRA Class I, ARFF Index E NOTAM FILE IAD
RWY 01C-19C: H11500X150 (CONC-GRVD) S-200, D-250, 2D-450, 2D/2D2-875 PCN 81 R/C/W/T HIRL CL
RWY 01C: MALSR. TDZL. PAPI(P4L)—GA 3.0° TCH 70'. RVR-TMR
RWY 19C: ALSF2. TDZL. PAPI(P4R)—GA 3.0° TCH 72'. RVR-TMR
RWY 01R-19L: H11500X150 (CONC-GRVD) S-200, D-250, 2D-450, 2D/2D2-875 PCN 81 R/C/W/T HIRL CL
RWY 01R: ALSF2. TDZL. PAPI(P4R)—GA 3.0° TCH 72'. RVR-TMR
RWY 19L: ALSF2. PAPI(P4L)—GA 3.0° TCH 75'. RVR-TMR Pole. 0.3% up.
RWY 12-30: H10501X150 (CONC-GRVD) S-200, D-250, 2D-450, 2D/2D2-875 PCN 81 R/C/W/T HIRL CL
RWY 12: MALSR. TDZL. PAPI(P4R)—GA 3.0° TCH 66'. RVR-TR 0.3% down.
RWY 30: REIL. PAPI(P4L)—GA 3.0° TCH 84'. RVR-TR
RWY 01L-19R: H9400X150 (CONC-GRVD) S-200, D-250, 2D-450, 2D/2D2-875 PCN 81 R/C/W/T HIRL CL
RWY 01L: ALSF2. TDZL. PAPI(P4L)—GA 3.0° TCH 70'. RVR-TMR 0.3% down.
RWY 19R: ALSF2. TDZL. PAPI(P4L)—GA 3.0° TCH 70'. RVR-TMR

RUNWAY DECLARED DISTANCE INFORMATION

RWY 01C:TORA-11500 TODA-11500 ASDA-11500 LDA-11500
RWY 01L:TORA-9400 TODA-9400 ASDA-9400 LDA-9400
RWY 01R:TORA-11500 TODA-11500 ASDA-11500 LDA-11500
RWY 12: TORA-10501 TODA-10501 ASDA-10501 LDA-10501
RWY 19C:TORA-11500 TODA-11500 ASDA-11500 LDA-11089
RWY 19L:TORA-11500 TODA-11500 ASDA-11500 LDA-11500
RWY 19R:TORA-9400 TODA-9400 ASDA-9400 LDA-9400
RWY 30: TORA-10501 TODA-10501 ASDA-10501 LDA-10501

SERVICE: S4 FUEL 100LL, JET A OX 1, 3 LGT Rwy status lghts are in opn.

AIRPORT REMARKS: Attended continuously. Large flocks of birds on and in/ovf arpt/deer in/ovf arpt. During periods of acft saturation long term parking may not be available. Services for fuel and go only will be available. Fit trng btn 0300-1200Z prohibited. Inrnt acft ctc FBO on 122.95 or 129.77 for svcs. ASDE-X in use. Operate transponders with altitude reporting mode and ADS-B (if equipped) enabled on all airport surfaces. Air carrier push backs and pwr from all apron positions rqr clnc from MAAA Ramp twr. B747-8 rstd to max taxi speed 17 kt (20 MPH) on Twy J. All acft with wingspan exceeding 118' are rstd from using Taxilane A btn Taxilane A1 and A5. Twy E1 rstd to acft with a wingspan less than 79'. Engine run-ups btn 2200L and 0700L rqr prior apvl from arpt ops. Runup blk for Rwy 30 dsgnd as non-movement area. Taxilane C active, pushback clncs on North side of midfld terminal are onto Taxilane D only unless otherwise authorized. All 180° turns out of apron positions shall be made using minimum pwr. Rwy 30 departures use upper antenna for ATC communications. Ldg fee. Flight Notification Service (ADCUS) available.

AIRPORT MANAGER: 703-572-2730

WEATHER DATA SOURCES: ASOS 134.85 (703) 661-2990. TDWR.

COMMUNICATIONS: D-ATIS 134.85 571-323-6374. UNICOM 122.95

Ⓡ **POTOMAC APP CON** 128.525 (091°-240°) 126.1 (331°-090°) 120.45 (241-330°) Air surveillance radar unavbl abv 15,000'.

TOWER 120.1 (Rwy 01R-19L) 120.25 (Rwy 01C-19C) 134.425 (Rwy 01L-19R, Rwy 12-30)

MIDFIELD RAMP CON 129.55

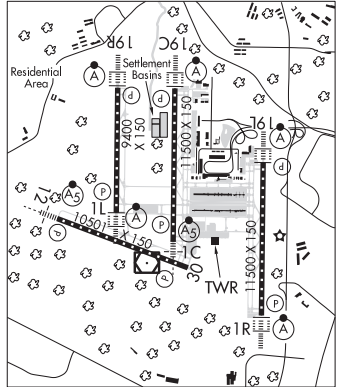
GND CON 121.625 (West) 121.9 (East) **CLNC DEL** 135.7

Ⓡ **POTOMAC DEP CON** 126.65 (190°-300°) 125.05 (300°-010°) Air surveillance radar unavbl abv 15,000'.

CPDLC (LOGON KUSA)

PDC

AIRSPACE: CLASS B See VFR Terminal Area Chart.



CONTINUED ON NEXT PAGE

DISTRICT OF COLUMBIA
CONTINUED FROM PRECEDING PAGE

RADIO AIDS TO NAVIGATION: NOTAM FILE IAD.

ARMEL (L) (L) VORW/DME 113.5 AML Chan 82 N38°56.08' W77°28.00' at fld. 296/8W.

VOR unusable:

055°-092° blo 4,500'

093°-115°

116°-210° blo 4,500'

DME unusable:

055°-210° byd 28 NM blo 2,500'

211°-230° byd 30 NM blo 3,000'

ILS 111.3 I-OSZ Rwy 01C. Class IIE.

ILS/DME 110.75 I-OIU Chan 44(Y) Rwy 01L. Class IIIE. LOC unusable byd 25° left of course.

ILS/DME 110.1 I-IAD Chan 38 Rwy 01R. Class IIIE.

ILS 109.3 I-AJU Rwy 12. Class IE.

ILS 111.3 I-DLX Rwy 19C. Class IIIE.

ILS/DME 110.1 I-SGC Chan 38 Rwy 19L. Class IIE.

ILS/DME 110.75 I-ISU Chan 44(Y) Rwy 19R. Class IIIE.
