

GREAT FALLS INTL (GTF)(KGTF) P (ANG) 3 SW UTC-7(-6DT)

N47°28.94' W111°22.22'

GREAT FALLS
H-1E, L-13C
IAP, AD

3680 B AOE ARFF Index—See Remarks NOTAM FILE GTF

RWY 03-21: H10502X150 (ASPH-GRVD) S-116, D-225, 2S-175,

2D-424, 2D/D1-555, 2D/2D2-915 PCN 58 F/B/X/T HIRL CL

RWY 03: ALSF2. TDZL. PAPI(P4L)—GA 3.0° TCH 70'. RVR-TMR Road.**RWY 21:** REIL. PAPI(P4R)—GA 3.0° TCH 75'. RVR-TMR 0.3% up.**RWY 17-35:** H6030X150 (ASPH-GRVD) S-87, D-140, 2D-245,

2D/2D2-245 PCN 30 F/B/X/T MIRL

RWY 17: PAPI(P4L)—GA 3.0° TCH 47'. Thld dsplcd 230'. Road.**RWY 35:** PAPI(P4L)—GA 3.0° TCH 48'.**RUNWAY DECLARED DISTANCE INFORMATION****RWY 03:** TORA-10502 TODA-10502 ASDA-10502 LDA-10502**RWY 17:** TORA-6030 TODA-6030 ASDA-6030 LDA-5800**RWY 21:** TORA-10502 TODA-10502 ASDA-10502 LDA-10502**RWY 35:** TORA-5400 TODA-5400 ASDA-5400 LDA-5400**SERVICE:** S4 **FUEL** 100LL, JET A OX 1, 2, 3, 4 **LGT** Rwy 21 REIL opr continuously when rwy lgts are on. Rwy lgts controlled by twr. **RWY 03** PAPI UNUSBL BYD 9 DEGS right of CNTRLN. **MILITARY— JASU** 7(MD-3) 3(MC-1) 20(MC-11) 9(MD-4M0) 2(M32A-60A) **FUEL** A++(ANG) A(C406-453-7613) (NC-100LL) **FLUID SP PRESAIR OIL** O-128-133-148-156(Mil) **TRAN ALERT** Ltd tran svc only avbl for acft participating in ANG Ops with Prior Coordination (PPR).**AIRPORT REMARKS:** Attended continuously. Birds on and invof arpt. Class I, ARFF Index B. Index level C ARFF capability is available at all times. Twy C unrstd weight and avbl for taxiing acft. Flight Notification Service (ADCUS) avbl.**AIRPORT MANAGER:** 406-727-3404**WEATHER DATA SOURCES:** ASOS 126.6 (406) 454-7551.**COMMUNICATIONS:** ATIS 126.6 UNICOM 122.95

RCO 122.3 (GREAT FALLS RADIO)

Ⓡ APP/DEP CON 128.6

TOWER 118.7 GND CON 121.7 CLNC DEL 121.7

AIRSPACE: CLASS D.

TRSA svc ctc APP CON 128.6

RADIO AIDS TO NAVIGATION: NOTAM FILE GTF.

(VH) (H) VORTACW 115.1 GTF Chan 98 N47°27.00' W111°24.73' 025° 2.6 NM to fld. 3672/16E.

VOR unusable:

060°-171° byd 40 NM

072°-084° byd 40 NM blo 18,000'

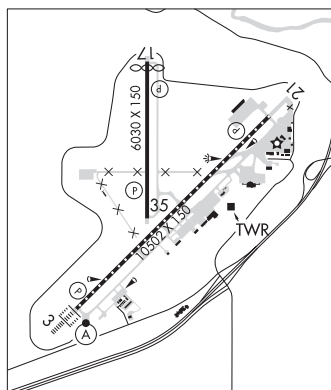
092°-111° byd 40 NM blo 13,000'

092°-111° byd 71 NM

112°-119° byd 40 NM blo 18,000'

120°-147° byd 40 NM

ILS/DME 111.3 I-SMR Chan 50 Rwy 03. Class IIIE.

**HAMILTON****RAVALLI CO** (HRF)(KHRF) 1 E UTC-7(-6DT) N46°15.43' W114°07.43'**GREAT FALLS**
H-1D, L-13C
IAP

3636 B TPA-4436(800) NOTAM FILE GTF

RWY 17-35: H5200X75 (ASPH) S-40, D-53 PCN 15 F/D/Y/U MIRL**RWY 17:** PAPI(P2L)—GA 3.0° TCH 35'.**RWY 35:** PAPI(P2L)—GA 3.0° TCH 35'.**SERVICE:** S4 **FUEL** 100LL, JET A, A+ **LGT** ACTVT PAPI Rwy 17, 35; MIRL Rwy 17-35—CTAF. For MIRL Rwy 17-35 drg dalgt hrs ctc ap mgr 406-375-9149.**AIRPORT REMARKS:** Unattended. Ultralight activity on and invof arpt. Rwy 17-35 is ltd by the arpt opr to acft max gwt tkof 40000 lbs SW and 53000 lbs DW w/o PPR. Lndg Fee: Ldg fee for acft ovr 17000 lbs.**AIRPORT MANAGER:** 406-375-9149**WEATHER DATA SOURCES:** AWOS-3P 119.825 (406) 375-9149. press *3**COMMUNICATIONS:** CTAF/UNICOM 122.8

Ⓡ SALT LAKE CENTER APP/DEP CON 132.4

CLEARANCE DELIVERY PHONE: For CD ctc Salt Lake ARTCC at 801-320-2568.