

PENDLETON

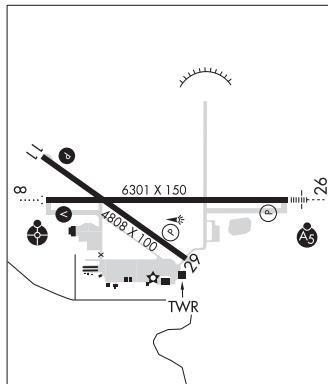
EASTERN OREGON RGNL AT PENDLETON (PDT)(KPDPT) P (ARNG) 3 NW UTC-8(-7DT) N45°41.71' SEATTLE
 W118°50.60' H-1C, L-13A
 1494 B NOTAM FILE PDT IAP, AD

RWY 08-26: H6301X150 (ASPH-PFC) S-115, D-132, 2D-210
 PCN 34 F/B/Y/U HIRL
RWY 08: ODALS. VASI(V4R)—GA 3.0° TCH 35'. RVR-R Ground.
RWY 26: MALSR. PAPI(P4L)—GA 3.0° TCH 48'. RVR-T
RWY 11-29: H4808X100 (ASPH-GRVD) S-70, D-120, 2S-152,
 2D-122 PCN 18 F/B/Y/U MIRL
RWY 11: REIL. PAPI(P4L)—GA 3.0° TCH 46'.
RWY 29: REIL. PAPI(P4R)—GA 3.0° TCH 48'.

RUNWAY DECLARED DISTANCE INFORMATION

RWY 08: TORA-6301 TODA-6301 ASDA-6301 LDA-6301
RWY 11: TORA-4808 TODA-4808 ASDA-4808 LDA-4808
RWY 26: TORA-6301 TODA-6301 ASDA-6301 LDA-6301
RWY 29: TORA-4808 TODA-4808 ASDA-4808 LDA-4808

SERVICE: S4 FUEL 100LL, JET A1+, MOGAS LGT When ATCT clsd
 ACTVT MALSR Rwy 26; ODALS Rwy 08; REIL Rwy 11 & 29; VASI
 Rwy 08, PAPI Rwy 11; HIRL Rwy 08-26; MIRL Rwy 11-29—CTAF.
 Rwy 11-29 PCL for hi instnt 5 clicks only. PAPI Rwy 29 opr consly.
 REIL Rwy 11 OTS. REIL Rwy 29 OTS. **MILITARY— FUEL** (NC-100LL,
 A1+ - Self svc avbl H24.)



AIRPORT REMARKS: Attended 1400-0400Z†. Svcs avbl from FBO btn 0400-1400Z† by phone call 541-276-3313 or 541-310-9542. Self fueling cardlocks avbl 24 hrs. Clsd to unscheduled air carrier ops with more than 30 pax seats exc PPR 4 hrs call 541-276-4411. Deer on and invof arpt Apr and Aug especially mornings and evenings. Thld Rwy 29 nstd marking, portion of rwy to function as twy. Twy B clsd south of Twy A. Int of ramp and Rwy 29 north end of terminal bldg, area obstructed from view of twr by terminal bldg. Rwy 08-26 surface condition unmonitored 1400-0400Z†. Rwy 11-29 surface condition unmonitored 1400-0400Z†. Fqt dly UAS activity (lge and small) inside and invof the CDAS.

AIRPORT MANAGER: 541-276-7754

WEATHER DATA SOURCES: ASOS 118.325 (541) 278-2329.

COMMUNICATIONS: CTAF 119.7 UNICOM 122.95

PENDLETON RCO 122.2 (MC MINNVILLE RADIO)

Ⓡ SPOKANE APP/DEP CON 133.15 (1400-0600Z†) other times ctc

Ⓡ SEATTLE CENTER 132.6

TOWER 119.7 (1400-0400Z†) GND CON 121.9

CLEARANCE DELIVERY PHONE: When Apch clsd, for CD ctc Seattle ARTCC at 253-351-3694

AIRSPACE: CLASS D svc 1400-0400Z†; other times CLASS E.

RADIO AIDS TO NAVIGATION: NOTAM FILE PDT.

PENDLETON (VH) (H) VORTACW 114.7 PDT Chan 94 N45°41.91' W118°56.32' 079° 4.0 NM to fld. 1575/14E.

VOR unusable:

- 057°-066° byd 40 NM
- 067°-078° byd 40 NM blo 29,000'
- 096°-106° byd 40 NM blo 8,300'
- 096°-106° byd 48 NM blo 18,000'
- 107°-117° byd 40 NM
- 118°-128° byd 40 NM blo 12,000'
- 118°-128° byd 75 NM
- 129°-207° byd 40 NM

ILS 110.3 I-PDT Rwy 26. Class IE. LOC and glideslope unmonitored when twr clsd.

COMM/NAV/WEATHER REMARKS: Emerg freq 121.5 not avbl at twr.

PINEHURST STATE (24S) 1 SW UTC-8(-7DT) N42°06.61' W122°22.99'

KLAMATH FALLS

3643 NOTAM FILE MMV

RWY 04-22: H2800X30 (ASPH) 2.0% up SW

RWY 04: Trees.

RWY 22: Trees.

AIRPORT REMARKS: Unattended. Surface conditions not reported. Irregular winter maintenance. Arpt may be clsd by snow.

Strong winds from any direction will likely cause low-level turbulence. Rwy 04-22 12 ft trees wi 25 feet of cntrn full len.

Rwy 22 slopes up to the SW, with abrupt 4% rise on SW half of rwy. Owner advises contact Oregon Dept. of Aviation

503-378-4880 prior to use.

AIRPORT MANAGER: 503-378-4880

COMMUNICATIONS: CTAF 122.9

CLEARANCE DELIVERY PHONE: For CD ctc Seattle ARTCC at 253-351-3694.

PITTSBURG LANDING (See IMNAHA on page 178)