

**PULLMAN/MOSCOW RGNL** (PUW)(KPUW) 3 NE UTC-8(-7DT) N46°44.50' W117°06.70'

SEATTLE  
H-1C, L-13B  
IAP, AD

2567 B Class I, ARFF Index B NOTAM FILE PUW

**RWY 05-23:** H7100X150 (ASPH-GRVD) S-120, D-239, 2D-385

PCN 68 F/C/X/T HIRL

**RWY 05:** MALSR. PAPI(P4L)—GA 3.0° TCH 49'. RVR-T Fence.

**RWY 23:** REIL. PAPI(P4R)—GA 3.4° TCH 58'. RVR-R Ground.

**RUNWAY DECLARED DISTANCE INFORMATION**

**RWY 05:** TORA-7100 TODA-7100 ASDA-7100 LDA-7100

**RWY 23:** TORA-7100 TODA-7100 ASDA-7100 LDA-7100

**SERVICE:** S4 FUEL 100LL, JET A LGT ACTIVATE MALSR Rwy 05; REIL Rwy 23; PAPI Rwy 05 and 23; HIRL Rwy 05-23—CTAF.

**AIRPORT REMARKS:** Attended 1600-0200Z. CLOSED to unscheduled air carrier ops with more than 30 pax seats exc PPR call arpt mgr 509-338-3223. Parachute Jumping. Non-paved areas soft. No parking between rwy and twy and within 30' of twy to the northwest. No non-paved acft ops auth. Ldg fee for all coml acft and all itinerant acft over 7,000 lbs.

**AIRPORT MANAGER:** 509-338-3223

**WEATHER DATA SOURCES:** ASOS 135.675 (509) 334-3222.

**COMMUNICATIONS:** CTAF/UNICOM 122.8

RCO 122.6 (SEATTLE RADIO)

Ⓡ SEATTLE CENTER APP/DEP CON 123.95

**CLEARANCE DELIVERY PHONE:** For CD if una to ctc on FSS freq, ctc Seattle ARTCC at 253-351-3694.

**AIRSPACE:** CLASS E svc 1400-0600Z Mon-Fri, 1700-0000Z Sat, 1900-0600Z Sun; other times CLASS G.

**RADIO AIDS TO NAVIGATION:** NOTAM FILE PUW.

(VL) (L) VORW/DME 117.15 PUW Chan 118(Y) N46°40.45' W117°13.41' 029° 6.1 NM to fld. 2772/20E. DME unmonitored.

DME unusable:

040°-045° byd 35 NM blo 8,000'

065°-070° byd 30 NM blo 7,000'

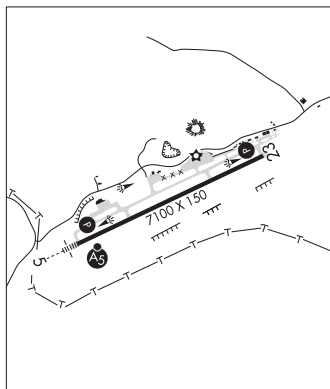
090°-095° byd 35 NM blo 7,000'

VOR unusable:

032°-100° byd 40 NM

155°-195° byd 40 NM

ILS/DME 110.35 I-PUW Chan 40(Y) Rwy 05. Class IE.



## PUYALLUP

**PIERCE CO - THUN FLD** (PLU)(KPLU) 5 S UTC-8(-7DT) N47°06.24' W122°17.23'

SEATTLE  
L-1D  
IAP

538 B NOTAM FILE PLU

**RWY 17-35:** H3651X60 (ASPH) MIRL

**RWY 17:** REIL. PAPI(P4L)—GA 4.0° TCH 53'. Trees.

**RWY 35:** REIL. PAPI(P4R)—GA 4.0° TCH 53'. Road.

**SERVICE:** S4 FUEL 100LL OX 4 LGT ACTVT REIL Rwys 17 and 35;

PAPI Rwys 17 and 35 and MIRL Rwy 17-35—CTAF.

**NOISE:** Noise sensitive all quadrants.

**AIRPORT REMARKS:** Attended 1600-2200Z. Fuel avbl 24 hrs with credit card. Ultralights prohibited.

**AIRPORT MANAGER:** 253-798-3779

**WEATHER DATA SOURCES:** AWOS-3 128.575 (253) 848-2748.

**COMMUNICATIONS:** CTAF/UNICOM 122.7

Ⓡ SEATTLE APP/DEP CON 126.5

CLNC DEL 121.85

**CLEARANCE DELIVERY PHONE:** For CD ctc Seattle Apch at 206-214-4723.

**RADIO AIDS TO NAVIGATION:** NOTAM FILE TCM.

MCCHORD (T) TACAN Chan 33 TCM (109.6) N47°08.86'

W122°28.50' 094° 8.1 NM to fld. 283/15E.

No NOTAM MP 0800-2300Z. Wed

