

SWANSON (See EATONVILLE on page 233)

TACOMA NARROWS (TIW)(KTIW) 4 W UTC-8(-7DT) N47°16.08' W122°34.69'

SEATTLE
H-1B, L-1D
IAP, AD

295 B TPA-1295(1000) LRA NOTAM FILE TIW MON Airport

RWY 17-35: H5002X100 (ASPH-GRVD) S-50, D-80, 2S-102, 2D-80, 2D/2D2-150 MIRL

RWY 17: MALSR. PAPI(P4R)—GA 3.0° TCH 52'.

RWY 35: REIL. PAPI(P4L)—GA 3.0° TCH 45'. Rgt tfc.

SERVICE: S4 FUEL 100LL, JET A OX4 LGT When ATCT clsd, ACTVT MALSR Rwy 17; REIL Rwy 35; PAPI Rwy 17 and 35; MIRL Rwy 17-35—CTAF. Rwy 35 PAPI unusbl byd 5.0 degrees left of cntrln.

NOISE: Noise sensitive arpt; for NS ABTMT and tfc procedures call arpt office 253-798-8550.

AIRPORT REMARKS: Attended 1500-0000Z†. Deer on and invof arpt. For customs call 253-593-6338 ext #2.

AIRPORT MANAGER: 253-798-8550

WEATHER DATA SOURCES: ASOS (253) 858-6507 LAWRS.

COMMUNICATIONS: CTAF 118.5 ATIS 124.05 UNICOM 122.95

Ⓡ SEATTLE APP/DEP CON 120.1

TOWER 118.5 (1600-0400Z†) **GND CON** 121.8

CLEARANCE DELIVERY PHONE: For CD when ATCT is clsd ctc Seattle Apch at 206-214-4723.

AIRSPACE: CLASS D svc 1600-0400Z†; other times CLASS E.

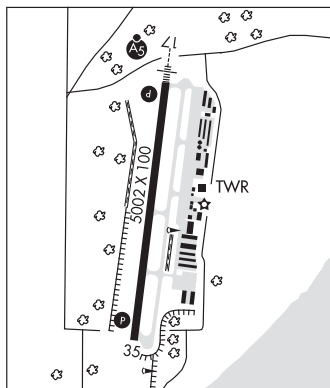
RADIO AIDS TO NAVIGATION: NOTAM FILE TCM.

MCCORD (T) TACAN Chan 33 TCM (109.6) N47°08.86' W122°28.50' 315° 8.4 NM to fld. 283/15E.

No NOTAM MP 0800-2300Z† Wed

ILS 109.1 I-TIW Rwy 17. Class IA. Unmonitored when ATCT clsd.

COMM/NAV/WEATHER REMARKS: Emerg freq 121.5 not avbl at twr.



TATOOSH N48°17.99' W124°37.62' NOTAM FILE SEA.

SEATTLE
H-1B, L-1D

(VH) (H) VORTACW 112.2 TOU Chan 59 151° 22.0 NM to Quillayute. 1650/22E.

VOR unusable:

020°-025° byd 40 NM

085°-090° byd 40 NM

091°-101° byd 40 NM blo 15,000'

091°-101° byd 58 NM

103°-109° byd 40 NM

356°-360° byd 40 NM

RCO 122.5 (SEATTLE RADIO)

TEKOA

WILLARD FLD (73S) 2 NE UTC-8(-7DT) N47°14.13' W117°02.62'

SEATTLE

2520 B NOTAM FILE SEA

RWY 04-22: H2261X40 (ASPH) MIRL

RWY 04: Thld dsplcd 190'. Trees.

RWY 22: Thld dsplcd 240'.

SERVICE: S4 FUEL 100LL LGT ACTIVATE MIRL Rwy 04-22-122.8.

AIRPORT REMARKS: Unattended. Self svc fuel with credit card. Parachute Jumping. Grass areas not avbl for acft ops.

AIRPORT MANAGER: 509-322-8643

COMMUNICATIONS: CTAF 122.9

CLEARANCE DELIVERY PHONE: For CD ctc Seattle ARTCC at 253-351-3694.

TIETON STATE (See RIMROCK on page 269)