

BUFFALO

JOHNSON CO (BYG)(KBYG) 3 NW UTC-7(-6DT) N44°22.87' W106°43.31'

4970 B NOTAM FILE BYG

RWY 13-31: H6143X75 (ASPH) S-12.5 PCN 24 F/D/X/T MIRL

1.1% up NW

RWY 13: PAPI(P4L)—GA 3.0° TCH 51'.

RWY 31: REIL. PAPI(P4L)—GA 3.0° TCH 42'.

SERVICE: S4 FUEL 100LL, JET A LGT ACTIVATE MIRL Rwy 13-31, PAPI Rwys 13 and Rwy 31 and REIL Rwy 31—122.8.

AIRPORT REMARKS: Attended Mon-Fri 1500-0000Z†, Sat 1500-1900Z†. For svc after hrs call 307-217-2060 or 210-287-1548. 100LL avbl self svc credit card. For Jet A after hrs phone 307-217-2060 or 210-287-1548. Deer on and invof arpt. Terrain drops off both sides of Rwy 13-31. Rwy 31 +250' drop 170' left first 417'.

AIRPORT MANAGER: 307-684-9672

WEATHER DATA SOURCES: ASOS 135.425 (307) 684-2558.

COMMUNICATIONS: CTAF/UNICOM 122.8

CRAZY WOMAN RCO 122.2 (CASPER RADIO)

Ⓡ SALT LAKE CENTER APP/DEP CON 127.75

CLEARANCE DELIVERY PHONE: For CD ctc Salt Lake ARTCC at 801-320-2568.

RADIO AIDS TO NAVIGATION: NOTAM FILE CPR.

CRAZY WOMAN (VH) (DH) VORW/DME 117.3 CZI Chan 120

N43°59.98' W106°26.14' 319° 26.0 NM to fld.

4800/13E.

VOR unusable:

225°-230° byd 40 NM

231°-241° byd 40 NM blo 18,000'

242°-254° byd 40 NM

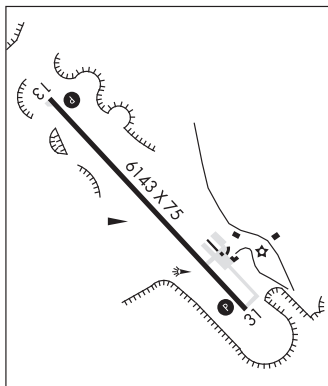
255°-265° byd 40 NM blo 25,000'

266°-300° byd 40 NM

CHEYENNE

H-1E, 2G, L-13D

IAP



CAMP GUERNSEY (See GUERNSEY on page 308)

CASPER

CASPER/NATRONA CO INTL (CPR)(KCPR) 7 NW UTC-7(-6DT)

5344 B LRA Class I, ARFF Index B NOTAM FILE CPR

RWY 03-21: H10165X150 (ASPH-GRVD) S-130, D-170, 2D-270

PCN 46 F/B/X/T HIRL

RWY 03: MALSR. PAPI(P4R)—GA 3.0° TCH 50'. RVR-T

RWY 21: REIL. VASI(V4L)—GA 3.0° TCH 56'. RVR-R

RWY 08-26: H8679X150 (ASPH-GRVD) S-85, D-140, 2D-260

PCN 44 F/B/X/T HIRL

RWY 08: MALSR. VASI(V4R)—GA 3.0° TCH 103'. RVR-T

RWY 26: REIL. PAPI(P4R)—GA 3.0° TCH 50'. RVR-R 0.4% up.

RUNWAY DECLARED DISTANCE INFORMATION

RWY 03: TORA-10165 TODA-10165 ASDA-10165 LDA-10165

RWY 08: TORA-8679 TODA-8679 ASDA-8679 LDA-8679

RWY 21: TORA-10165 TODA-10165 ASDA-10165 LDA-10165

RWY 26: TORA-8679 TODA-8679 ASDA-8679 LDA-8679

SERVICE: S4 FUEL 100LL, JET A OX 1, 2, 3, 4 LGT ATC-CTL. When ATCT clsd ACTVT MALSR Rwy 03 and 08; REIL Rwy 21; PAPI Rwy 03 and 26; HIRL Rwy 03-21 and Rwy 08-26; twy lghts—CTAF.

AIRPORT REMARKS: Attended continuously. Emerg pwr avbl Rwy 08-26 and Rwy 03-21. Rwy 08-26 and Rwy 03-21 have lgt distance remaining signs. Rwys clsd to FSL, TGL, and PLA aircraft more than 250,000 lbs except for 4 hrs PPR 307-995-3949. 225 ft crane 1 NM northeast of arpt. Flight Notification Service (ADCUS) available.

AIRPORT MANAGER: 307-472-6688

WEATHER DATA SOURCES: ASOS (307) 472-8960 LAWRS 1200-0400Z†.

COMMUNICATIONS: CTAF 118.3 ATIS 126.15 UNICOM 122.95

RCO 122.6 (CASPER RADIO)

Ⓡ APP/DEP CON 120.65 (1200-0400Z†)

Ⓡ DENVER CENTER APP/DEP CON 135.6 (0400-1200Z†)

TOWER 118.3 (1200-0400Z†) GND CON 121.9 CLNC DEL 121.9

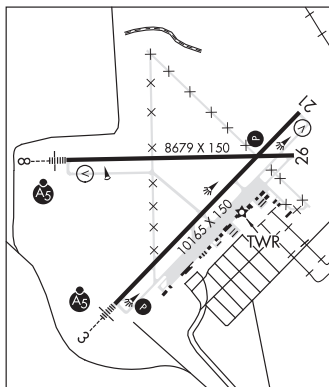
CLEARANCE DELIVERY PHONE: For CD ctc Casper Apch at 307-472-8940, when Apch clsd ctc Denver ARTCC at 303-651-4257.

N42°54.35' W106°27.82'

CHEYENNE

H-3F, 5A, L-11E, 12F

IAP, AD



CONTINUED ON NEXT PAGE

NW, 11 JUL 2024 to 5 SEP 2024

CONTINUED FROM PRECEDING PAGE

AIRSPACE: CLASS D svc 1200-0400Z; other times CLASS E.

RADIO AIDS TO NAVIGATION: NOTAM FILE CPR.

MUDDY MOUNTAIN (VH) (DH) VOR/DME 116.2 DDD Chan 109 N43°05.45' W106°16.62' 205° 13.8 NM to fld.
5863/12E.

VOR unusable:

- 132°-142° byd 40 NM blo 18,000'
- 143°-153° byd 40 NM
- 154°-164° byd 40 NM blo 10,800'
- 154°-164° byd 81 NM
- 165°-180° byd 40 NM

ILS 111.3 I-SYD Rwy 03. Class IB. SYD LOC is unmonitored from 0400-1200Z daily.

COMM/NAV/WEATHER REMARKS: Emerg freq 121.5 not avbl at twr.

IRWINS SKY RANCH (HAD)(KHAD) 5 N UTC-7(-6DT) N42°55.46' W106°18.57' CHEYENNE

5370 NOTAM FILE CPR

RWY 07-25: 3810X30 (DIRT)

RWY 07: Bldg.

AIRPORT REMARKS: Unattended. Antelope on and invof arpt. Line of sight problem btn Rwy 07 and Rwy 25, Rwy 25 slopes uphill first 510'. Abandoned arpt 1.5 miles west.

AIRPORT MANAGER: 307-262-0606

COMMUNICATIONS: CTAF 122.9

CLEARANCE DELIVERY PHONE: For CD ctc Casper Apch at 307-472-8940, when Apch clsd ctc Denver ARTCC at 303-651-4257.

CASPER N43°07.52' W106°20.43' CHEYENNE
RCD 122.6 (CASPER RADIO) L-11E, 12F

CENTRAL WYOMING RGNL (See RIVERTON on page 319)

CHEROKEE N41°45.34' W107°34.92' NOTAM FILE CPR. CHEYENNE
(VH) (H) VORW/DME 115.0 CKW Chan 97 065° 17.4 NM to Rawlins Muni/Harvey Fld. 7050/15E. H-3E, L-11E

VOR unusable:

- 000°-015° byd 40 NM
- 082°-085° byd 40 NM
- 114°-116° byd 40 NM
- 125°-135° byd 40 NM

RCD 122.4 (CASPER RADIO)