

PATTERSON

HARRY P WILLIAMS MEML (PTN)(KPTN) 2 NW UTC-6(-5DT) N29°42.57' W91°20.34'

HOUSTON

9 B LRA NOTAM FILE PTN

H-7D, L-21B, 22F, GOMC
IAF

RWY 06-24: H5399X150 (ASPH) S-32 MIRL

RWY 06: REIL. PAPI(P2L)—GA 3.0° TCH 50'. Thld dspcd 394'. Trees.

RWY 24: MALSR. PAPI(P2L)—GA 3.0° TCH 50'. Rgt tfc.

SERVICE: S4 FUEL 100LL, JET A LGT Actvt MALSR Rwy 24; MIRL Rwy 06-24 preset med instst, to incr instst—CTAF.

AIRPORT REMARKS: Attended continuously. 4500' by 100' waterwy hdg 04-22 lctd 1100' south of conc rwy. Dual land/sea operation.

AIRPORT MANAGER: 337-828-4100

WEATHER DATA SOURCES: AWOS-3PT 134.575 (985) 395-6735.

COMMUNICATIONS: CTAF/UNICOM 122.8

PATTERSON RCO 122.5 (DE RIDDER RADIO)

Ⓡ NEW ORLEANS APP/DEP CON 124.3

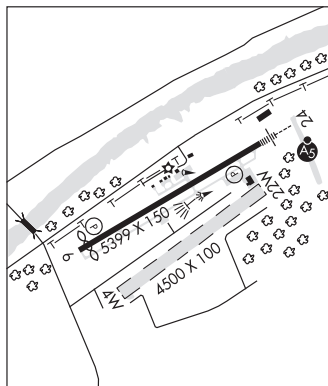
CLNC DEL 124.3

CLEARANCE DELIVERY PHONE: For CD ctc New Orleans Apch at 504-471-4350 or 124.3.

RADIO AIDS TO NAVIGATION: NOTAM FILE DRI.

TIBBY (L) VOR/DME 117.15 TBD Chan 118(Y) N29°39.86' W90°49.75' 274° 26.8 NM to fld. 10/2E.

ILS/DME 108.3 I-PTN Chan 20 Rwy 24. Class IA. ILS mnt by FBO durg NMI oprg hrs.



WATERWAY 04W-22W: 4500X100 (WATER)

WATERWAY 04W: Road. Rgt tfc.

PETE ANTIE MUNI HELIPORT (See MELVILLE on page 111)

PINEVILLE MUNI (2LØ) 2 N UTC-6(-5DT) N31°20.53' W92°26.61'

HOUSTON

100 B TPA—See Remarks NOTAM FILE DRI

L-21B, 22E

RWY 18-36: H3000X75 (ASPH) S-15.5 MIRL 0.5% up N

RWY 18: REIL. PAPI(P2L)—GA 4.0° TCH 68'. Trees.

RWY 36: REIL. PAPI(P2R)—GA 3.0° TCH 49'. Trees.

SERVICE: S4 FUEL 100LL, MOGAS OX 1, 2 LGT MIRL Rwy 18-36, REIL Rwy 18 and Rwy 36 preset low ints dusk-dawn. To increase ints ACTIVATE—CTAF. REILS OTS approach end Rwy 18. REILS OTS approach end Rwy 36.

AIRPORT REMARKS: Attended Mon-Fri 1400-0000Z±, Sat 1500-2000Z±.

Fuel avbl 24/7 with credit card. Rwy 18 drop off 95' from end of rwy. Rwy 36 lake 96' from end of rwy. TPA-780 (700) actf for water Rwy 05W-23W, 1100 (1000) fixed wing for Rwy 18-36. All Rwy 18-36 safety areas NSTD. Rwy 18 and Rwy 36, rwy markings faded.

AIRPORT MANAGER: 318-449-5679

COMMUNICATIONS: CTAF/UNICOM 122.8

CLEARANCE DELIVERY PHONE: For CD ctc Polk Apch at 337-531-2352.

RADIO AIDS TO NAVIGATION: NOTAM FILE AEX.

ALEXANDRIA (H) VORTACW 116.1 AEX Chan 108 N31°15.40' W92°30.06' 027° 5.9 NM to fld. 76/3E.

VOR unusable:

035°-065° blo 2,000'

066°-094° byd 35 NM blo 3,000'

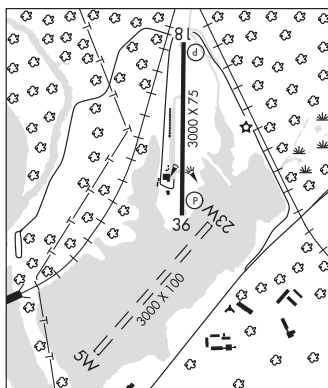
185°-200° byd 35 NM blo 3,000'

201°-214° byd 35 NM blo 2,000'

215°-260° blo 2,000'

261°-285° byd 35 NM blo 2,000'

357°-034° byd 35 NM blo 3,000'



WATERWAY 05W-23W: 3000X100 (WATER)

WATERWAY 23W: Rgt tfc.

SEAPLANE REMARKS: Waterway elevation 80'.