

**AMARILLO**

**BUFFALO** (1E7) 9 S UTC-6(-5DT) N35°03.83' W101°52.66'

DALLAS-FT WORTH

3640 B NOTAM FILE FTW

**RWY 02-20:** 6200X150 (TURF) LIRL

**RWY 02:** Fence.

**RWY 20:** Tree. Rgt tfc.

**RWY 08-26:** 1600X102 (TURF) LIRL(NSTD)

**RWY 08:** P-line.

**RWY 26:** Road.

**SERVICE:** LGT Rwy 08-26 nstd solar LIRL.

**AIRPORT REMARKS:** Attended irregularly.

**AIRPORT MANAGER:** 720-412-1132

**COMMUNICATIONS:** CTAF/UNICOM 122.8

**CLEARANCE DELIVERY PHONE:** For CD ctc Albuquerque ARTCC at 505-856-4861.

**PALO DURO** (1E4) 3 S UTC-6(-5DT) N35°08.62' W101°50.35'

DALLAS-FT WORTH

3639 NOTAM FILE FTW

**RWY 17-35:** 3700X50 (TURF-GRVL)

**RWY 17:** P-line.

**RWY 35:** Fence.

**AIRPORT REMARKS:** Unattended. Arpt fenced, gates locked, no aces. Rwy not suitable for acft. Arpt hazardous for tsnts; rwy not mkd or defined; 63 ft mkd/lgt'd transmission line acrs Rwy 17 end. Rwy 17-35 soft when wet on S end; loose grvl on rwy, vegetation on rwy.

**AIRPORT MANAGER:** 806-376-5853

**COMMUNICATIONS:** CTAF 122.9

**CLEARANCE DELIVERY PHONE:** For CD ctc Albuquerque ARTCC at 505-856-4861.

**RICK HUSBAND AMARILLO INTL** (AMA)(KAMA) 7 E UTC-6(-5DT) N35°13.16' W101°42.36'

DALLAS-FT WORTH

3607 B TPA—See Remarks LRA ARFF Index—See Remarks NOTAM FILE AMA

H-6G, L-15B

**RWY 04-22:** H13502X200 (CONC-GRVD) S-100, D-200, 2S-175,

IAP, AD

2D-400 PCN 176R/C/W/T HIRL(NSTD)

**RWY 04:** MALSR. PAPI(P4L)—GA 3.0° TCH 61'. RVR-T

**RWY 22:** MALSR. PAPI(P4L)—GA 3.0° TCH 77'. RVR-R

**RWY 13-31:** H7901X150 (CONC-GRVD) S-100, D-200, 2S-175,

2D-400 PCN 89 R/B/W/T HIRL

**RWY 13:** REIL. PAPI(P4L)—GA 3.0° TCH 52'.

**RWY 31:** PAPI(P4L)—GA 3.0° TCH 52'.

**RUNWAY DECLARED DISTANCE INFORMATION**

**RWY 04:** TORA-13502 TODA-13502 ASDA-13502 LDA-13502

**RWY 13:** TORA-7901 TODA-7901 ASDA-7901 LDA-7901

**RWY 22:** TORA-13502 TODA-13502 ASDA-13502 LDA-13502

**RWY 31:** TORA-7901 TODA-7901 ASDA-7901 LDA-7901

**SERVICE:** S4 FUEL 100LL, JET A1+ OX 2, 4 LGT When ATCT clsd, to

incr intst and ACTVT MALSR Rwys 04 and 22; REIL Rwy 13; HIRL

Rwys 04-22, 13-31; all twys—CTAF.

**AIRPORT REMARKS:** Attended continuously. Tiltrotor acft activity invof arpt.

Class I, ARFF Index B. Index C equip avbl upon req. TPA for propeller

acft 4502 (895), turbojet acft 5002 (1395), overhead 5502 (1895).

Rwy 04-22 center 130' grvd full length. RWY 04 RVR AVBL

1200-0600Z± CTC TWR. Rwy 04-22 NSTD HIRL due to spacing. HIRL 50 ft from rwy edge, NSTD dstc fm

cntrln—pavement outside rwy edge stripes may not be full strength and depth perception problems may exist during periods of darkness. Flight Notification Service (ADCUS) available. Lndg fee.

**AIRPORT MANAGER:** 806-354-7721

**WEATHER DATA SOURCES:** ASOS 118.85 (806) 335-1060.

**COMMUNICATIONS:** CTAF 118.3 ATIS 118.85 UNICOM 122.95

AMARILLO RCO 122.3 (FORT WORTH RADIO) (0600-1200Z±)

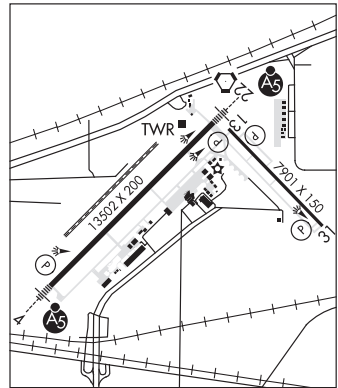
Ⓡ APP/DEP CON 119.5 (1200-0600Z±)

Ⓡ ALBUQUERQUE CENTER APP/DEP CON 127.85 (0600-1200Z±)

TOWER 118.3 (1200-0600Z±) GND CON 121.9 CLNC DEL 121.65

**CLEARANCE DELIVERY PHONE:** For CD if una to ctc on FSS freq, ctc Albuquerque ARTCC at 505-856-4561.

**AIRSPACE:** CLASS C svc ctc APP CON svc 1200-0600Z±; other times CLASS E.



CONTINUED ON NEXT PAGE

**RADIO AIDS TO NAVIGATION:** NOTAM FILE FTW.

**PANHANDLE (H) (H) VORTACW** 116.6 PNH Chan 113 N35°14.10' W101°41.94' at fld. 3595/8E.

**PANDE NDB (LOWW)** 251 AM N35°08.79' W101°48.33' 040° 6.6 NM to fld. 3609/8E. NOTAM FILE AMA.

NDB unmonitored when ATCT clsd.

**ILS 110.3** I-AMA Rwy 04. Class IB. LOM PANDE NDB. Unmonitored when ATCT clsd.

**LDA/DME 111.1** I-RIQ Chan 48 Rwy 22.

**ASR (1200-0600Z)**

**RIVER FALLS (H81)** 9 SE UTC-6(-5DT) N35°04.89' W101°45.35'

**DALLAS-FT WORTH**

3585 B NOTAM FILE H81

H-6G, L-15B

**RWY 17-35:** H6015X60 (ASPH) MIRL

**RWY 17:** Thld dspcd 151'. Road.

**RWY 35:** Rgt tfc.

**RWY 04-22:** 3200X70 (TURF)

**RWY 04:** Rgt tfc.

**SERVICE:** S2 FUEL 100LL, JET A1+ OX4 LGT ACTVT MIRL Rwy 17-35—CTAF. Click PTT slowly, no more than once per second.

**AIRPORT REMARKS:** Attended 1300-0100Z. For fuel call 806-340-6790. Rwy 17 dspcd thr at 415 ft, not lgtd. Day len 6015 ft, night len 5000 ft.

**AIRPORT MANAGER:** 806-206-6525

**COMMUNICATIONS:** CTAF/UNICOM 122.725

**CLEARANCE DELIVERY PHONE:** For CD ctc Albuquerque ARTCC at 505-856-4861.

**RADIO AIDS TO NAVIGATION:** NOTAM FILE FTW.

**PANHANDLE (H) (H) VORTACW** 116.6 PNH Chan 113 N35°14.10' W101°41.94' 189° 9.6 NM to fld. 3595/8E.

**TRADEWIND (TDW)(KTDW)** 3 SE UTC-6(-5DT) N35°10.19' W101°49.55'

**DALLAS-FT WORTH**

3649 B NOTAM FILE FTW

H-6G, L-15B

**RWY 17-35:** H5098X60 (ASPH) S-16 MIRL

IAP

**RWY 17:** REIL. Thld dspcd 290'. Tree. Rgt tfc.

**RWY 35:** REIL. Thld dspcd 289'. Trees.

**RWY 05-23:** H3000X60 (ASPH) S-20 MIRL 0.5% up SW

**RWY 05:** Fence.

**RWY 23:** Pole. Rgt tfc.

**SERVICE:** S4 FUEL 100LL, JET A1+ OX3 LGT MIRL Rwy 17-35

SS-SR preset low. To incr instst and ACTVT REIL Rwy 17, 35; MIRL

Rwy 05-23—CTAF.

**AIRPORT REMARKS:** Attended 1300-0400Z. Aft hrs svc 806-376-1008.

Rwy 05-23 no mkg.

**AIRPORT MANAGER:** 806-376-1008

**WEATHER DATA SOURCES:** AWOS-AV 118.475 (806) 350-7407.

**COMMUNICATIONS:** CTAF/UNICOM 122.8

Ⓡ AMARILLO APP/DEP CON 119.5 (1200-0600Z)

Ⓡ ALBUQUERQUE CENTER APP/DEP CON 127.85 (0600-1200Z)

CLNC DEL 125.4

**CLEARANCE DELIVERY PHONE:** For CD ctc Albuquerque ARTCC at 505-856-4861.

**RADIO AIDS TO NAVIGATION:** NOTAM FILE FTW.

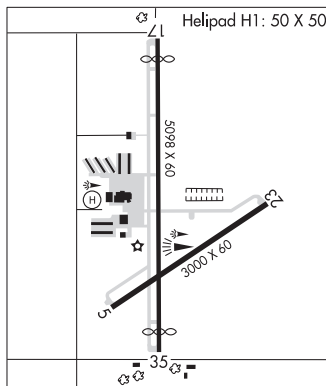
**PANHANDLE (H) (H) VORTACW** 116.6 PNH Chan 113 N35°14.10' W101°41.94' 230° 7.4 NM to fld. 3595/8E.

**PANDE NDB (LOWW)** 251 AM N35°08.79' W101°48.33' 317° 1.7 NM to fld. 3609/8E. NOTAM FILE AMA.

NDB unmonitored when ATCT clsd.

• • • • •

**HELIPAD H1:** H50X50 (ASPH)



**AMASON** N31°49.97' W94°09.23' NOTAM FILE CXO.

**HOUSTON**

**NDB (MHW)** 341 CZJ at Center Muni. 329/4E.

L-19E

**AMBASSADOR** N32°35.13' W95°06.79' NOTAM FILE FTW.

**DALLAS-FT. WORTH**

**NDB (MHW)** 404 ABG 424/7E. (VFR only).