

BROWNFIELD

TERRY CO (BFE)(KBFE) 4 E UTC-6(-5DT) N33°10.39' W102°11.58'

ALBUQUERQUE

- 3265 B NOTAM FILE FTW
- RWY 02-20:** H5218X75 (ASPH) S-50, D-65 MIRL
- RWY 02:** PAPI(P2L)—GA 3.0° TCH 43'.
- RWY 20:** PAPI(P2L)—GA 3.0° TCH 41'. Trees.
- RWY 13-31:** H2765X75 (ASPH) S-12 0.4% up NW
- RWY 13:** P-line.
- RWY 31:** Road.

H-6G, L-6H
IAP

SERVICE: FUEL 100LL, JET A LGT MIRL Rwy 02-20 preset low intensity, to increase intensity **ACTIVATE**—CTAF.
AIRPORT REMARKS: Unattended. Birds and wildlife on and invof arpt. 100LL fuel self svc 24 hrs. Rwy 02-20 parl twy poor, extsv cracks.

AIRPORT MANAGER: (806) 543-9840

COMMUNICATIONS: CTAF/UNICOM 122.8

Ⓡ **LUBBOCK APP/DEP CON** 119.2 119.9

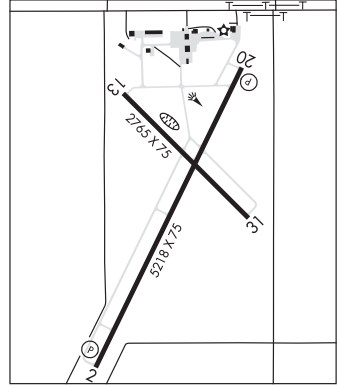
CLEARANCE DELIVERY PHONE: For CD ctc Fort Worth ARTCC at 817-858-7584.

RADIO AIDS TO NAVIGATION: NOTAM FILE LBB.

LUBBOCK (L) (L) VORTACW 109.2 LBB Chan 29 N33°42.30' W101°54.84' 193° 34.8 NM to fld. 3310/11E.

VOR unusable:

- 040°-050° byd 38 NM blo 5,300'
- 210°-260° byd 25 NM blo 6,000'



BROWNSVILLE/SOUTH PADRE ISLAND INTL (BRO)(KBRO) 4 E UTC-6(-5DT) N25°54.37'

BROWNSVILLE

W97°25.56' 22 B AOE ARFF Index—See Remarks NOTAM FILE BRO

H-7C, L-20H, 21A
IAP, AD

- RWY 13-31:** H7399X150 (ASPH-GRVD) S-75, D-170, 2S-175, 2D-240 PCN 67 R/D/X/T HIRL
- RWY 13:** MALSR. RVR-T Tree.
- RWY 31:** PAPI(P4L)—GA 3.0° TCH 68'. RVR-R Tree.
- RWY 18-36:** H6000X150 (ASPH-GRVD) S-75, D-144, 2S-175, 2D-150 PCN 7 F/C/X/T MIRL
- RWY 18:** PAPI(P4L)—GA 3.0° TCH 50'. Thld dspcd 190'. Tree.
- RWY 36:** VASI(V4L)—GA 3.0° TCH 51'. Tree.

RUNWAY DECLARED DISTANCE INFORMATION

- RWY 13:** TORA-7399 TODA-7399 ASDA-7399 LDA-7399
- RWY 18:** TORA-6000 TODA-6000 ASDA-6000 LDA-5810
- RWY 31:** TORA-7399 TODA-7399 ASDA-7399 LDA-7399
- RWY 36:** TORA-5532 TODA-5532 ASDA-5532 LDA-5532

SERVICE: S4 FUEL 100LL, JET A OX 1, 3 LGT When ATCT clsd ACTVT MALSR Rwy 13—CTAF.

AIRPORT REMARKS: Attended continuously. Birds on and invof arpt. For acct svc call 956-542-5852 or 956-542-9111. Lgtd oil derricks lctn aprxly 5 NM NE max 500 ft AGL. Class I, ARFF Index B. When ATCT clsd req ARFF assistance thru Houston ARTCC or fit svc. PPR 24 hrs for unsked acr opns with more than 30 psgr seats call AMGR. Txy J north of Txy H open to tfc under 12500 lbs. Landing fee. For cust and bdr protection svcs ctc: 956-547-5760 dly 1400-0600Z†; kbro.gap@cbp.dhs.gov. Aft hrs: 956-983-5704, 956-982-3653; brownsvilleopscenter@cbp.dhs.gov. Flight Notification Service (ADCUS) available.

AIRPORT MANAGER: 956-459-1227

WEATHER DATA SOURCES: ASOS 128.55 (956) 546-4540.

COMMUNICATIONS: CTAF 118.9 ATIS 128.55 UNICOM 122.95

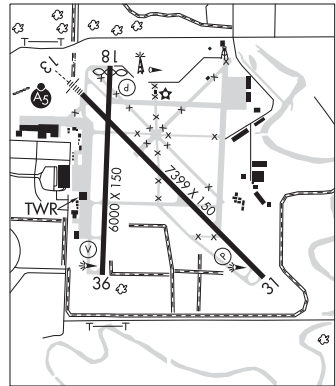
RCO 122.3 (SAN ANGELO RADIO)

Ⓡ **VALLEY APP/DEP CON** 119.5

TOWER 118.9 (1200-0600Z†) **GND CON** 121.9

CLEARANCE DELIVERY PHONE: For CD when ATCT is clsd ctc crp Apch at 361-299-4230.

AIRSPACE: CLASS D svc 1200-0600Z†; other times CLASS E.



CONTINUED ON NEXT PAGE

CONTINUED FROM PRECEDING PAGE

RADIO AIDS TO NAVIGATION: NOTAM FILE BRO.(H) (H) **VORTAC** 116.3 BRO Chan 110 N25°55.44' W97°22.52' 240° 2.9 NM to fld. 10/9E.

TACAN AZIMUTH unusable:

360°-290° byd 24 NM

DME unusable:

360°-290° byd 24 NM

VOR unusable:

271°-290° byd 20 NM

320°-335°

360°-270° byd 24 NM

DEPOO NDB (LOMW) 393 BR N25°59.02' W97°30.55' 133° 6.5 NM to fld. 29/3E.**ILS/DME** 110.3 I-BRO Chan 40 Rwy 13. Class IE. LOM DEPOO NDB. Unmonitored when ATCT closed.**BROWNWOOD RGNL** (BWD)(KBWD) 5 N UTC-6(-5DT) N31°47.62' W98°57.39'

1387 B NOTAM FILE BWD MON Airport

RWY 17-35: H5599X100 (ASPH) S-30 MIRL 0.3% up N**RWY 17:** MALS. PAPI(P4L)—GA 3.0° TCH 55'. Trees.**RWY 35:** PAPI(P4L)—GA 3.0° TCH 48'. Trees.**RWY 13-31:** H4608X101 (ASPH) S-25 MIRL**RWY 31:** Trees.**SERVICE:** S4 **FUEL** 100LL, JET A **LGT** ACTVT MALS Rwy 17; MIRL Rwy 13-31 and Rwy 17-35—CTAF.**AIRPORT REMARKS:** Attended Mon-Fri 1300-2300Z, Sat-Sun 1300-2100Z. Fuel avbl 24 hrs self svc. For fuel svc when arpt unatndd call 325-642-1026 or 325-643-1482. Airframe repairs on call 325-647-1876.**AIRPORT MANAGER:** 325-643-1482**WEATHER DATA SOURCES:** AWOS-3 118.325 (888) 297-9399.**COMMUNICATIONS:** CTAF/UNICOM 122.8

RCO 122.5 (FORT WORTH RADIO)

® FORT WORTH CENTER APP/DEP CON 127.45

CLEARANCE DELIVERY PHONE: For CD if una to ctc on FSS freq, ctc Fort Worth ARTCC at 817-858-7584.**RADIO AIDS TO NAVIGATION:** NOTAM FILE BWD.(VL) (L) **VOR/DME** 113.55 BWD Chan 82(Y) N31°53.55'

W98°57.45' 172° 5.9 NM to fld. 1574/8E.

VOR unusable:

010°-084° byd 40 NM

050°-080° byd 35 NM blo 5,500'

085°-099° byd 40 NM blo 5,000'

085°-099° byd 49 NM

DME unusable:

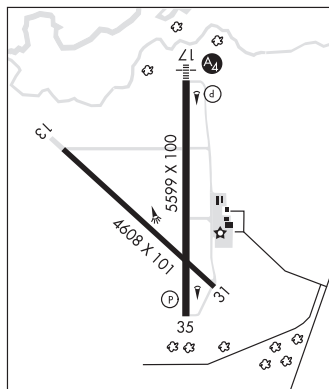
050°-080° byd 35 NM blo 5,500'

LOC 109.1 I-BWD Rwy 17. LOC unmonitored.

SAN ANTONIO

H-6H, L-19C

IAP

**BRUCE FLD** (See BALLINGER on page 256)