

MCKINNEY NTL (TKI)(KTKI) 32 N UTC-6(-5DT) N33°10.62' W96°35.33'

589 B NOTAM FILE TKI

RWY 18-36: H7002X150 (CONC) S-75, D-150, 2D-450 HIRL

RWY 18: MALSR. PAPI(P4L)—GA 3.0° TCH 50'.

RWY 36: MALS. PAPI(P4L)—GA 3.0° TCH 50'. Rgt tfc.

SERVICE: S4 **FUEL** 100LL, JET A1+ **OX** 3 **LGT** When ATCT clsd actvt
MALSR Rwy 18; MALS Rwy 36; PAPI Rwy 18 and 36; HIRL Rwy
18-36—CTAF.

AIRPORT REMARKS: Attended 1200-0400Z†. Bird activity invof arpt. Arpt
admin 972-562-4053. NOTE: See Special Notices—Arrival Alert.

AIRPORT MANAGER: 972-547-3401

WEATHER DATA SOURCES: ASOS (972) 548-8525 ASOS broadcast over ATIS
119.925 mhz

COMMUNICATIONS: CTAF 118.825 **UNICOM** 122.95 **ATIS** 119.925

Ⓡ **REGIONAL APP/DEP CON** 124.3

TOWER 118.825 (1200-0400Z†) **GND CON** 121.875 **CLNC DEL** 121.35
(when twr clsd)

AIRSPACE: CLASS D svc 1200-0400Z†; other times CLASS G.

RADIO AIDS TO NAVIGATION: NOTAM FILE FTW.

COWBOY (VH) (DH) VORW/DME 116.2 CVE Chan 109 N32°53.42'
W96°54.24' 037° 23.4 NM to fld. 443/6E.

VOR unusable:

030°-035° byd 40 NM

055°-060° byd 40 NM

130°-140° byd 40 NM

ILS/DME 109.35 I-EFE Chan 30(Y) Rwy 18. Unmonitored when ATCT clsd.

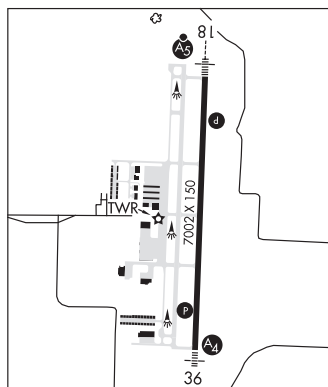
COMM/NAV/WEATHER REMARKS: ASOS broadcast over ATIS 119.925 mhz.

DALLAS-FT WORTH

COPTER

H-6H, L-17C, A

IAP, AD



DALLAS SOUTH PORT (See PALMER on page 397)