

**SAN ANTONIO INTL** (SAT)(KSAT) 7 N UTC-6(-5DT) N29°32.04' W98°28.14'

809 B LRA ARFF Index—See Remarks NOTAM FILE SAT

**RWY 04-22:** H8505X150 (CONC-GRVD) S-95, D-190, 2S-175,  
2D-270 PCN 91 R/B/W/T HIRL CL

**RWY 04:** MALS. PAPI(P4R)—GA 3.0° TCH 79'. RVR-T Pole.  
0.3% down.

**RWY 22:** REIL. PAPI(P4L)—GA 3.0° TCH 85'. RVR-R 0.5% up.

**RWY 13R-31L:** H8502X150 (CONC-GRVD) S-95, D-190, 2D-270  
PCN 86 R/B/W/T HIRL CL

**RWY 13R:** ALSF2. TDZL. PAPI(P4L)—GA 3.0° TCH 75'. RVR-TMR

**RWY 31L:** MALS.R. PAPI(P4L)—GA 3.0° TCH 82'. RVR-TMR Bldg.

**RWY 13L-31R:** H5519X100 (ASPH) S-59, D-120 PCN 61 F/C/W/T  
MIRL

**RWY 13L:** REIL. PAPI(P4L)—GA 3.0° TCH 40'.

**RWY 31R:** REIL. PAPI(P4L)—GA 3.0° TCH 60'.

**RUNWAY DECLARED DISTANCE INFORMATION**

**RWY 04:** TORA-8505 TODA-8505 ASDA-8505 LDA-8505

**RWY 13L:** TORA-5519 TODA-5519 ASDA-5519 LDA-5519

**RWY 13R:** TORA-8502 TODA-8502 ASDA-8502 LDA-8502

**RWY 22:** TORA-8505 TODA-8505 ASDA-8505 LDA-8505

**RWY 31L:** TORA-8502 TODA-8502 ASDA-8502 LDA-8502

**RWY 31R:** TORA-5519 TODA-5519 ASDA-5519 LDA-5519

**SERVICE:** S4 FUEL 100LL, JET A OX 1, 2, 3, 4

**NOISE:** Noise sensitive areas exist on all sides of arpt, at pilots discretion climb as quickly and quietly as safely possible on departure and use consideration when flying over populated areas by minimizing flt and high pwr settings. Military aircraft: Departing and arriving aircraft will use minimum power settings consistent with aircraft flight manuals, afterburner takeoff is prohibited unless required for safety of flight. Engine run-ups are permitted bwn 1200-0500Z.

**AIRPORT REMARKS:** Attended continuously. Numerous flocks of birds invof arpt. Glider/soaring ops aprx 17 miles northwest of arpt dur VFR. Rwy 13L-31R CLSD for const. Class I, ARFF Index C. SAT is ARFF Index C; ARFF Index D avbl with PPR. Rwy 13L-31R not avbl part 121 for air carrier ops. Foreign mil acct with wingspans less than 100' must report to general aviation ramp federal inspection station for cstms processing, etc arpt mgmt at 210-207-3433. Arpt restricted to acct with wingspan greater than 171', PPR with 24hr OPS 210-207-3433. Required for authorization. PPR with arpt ops for acct powering back from terminal gates. Acft taxiing on Rwy 04 northeast bound look for hold short to Rwy 31L. Acft taxiing on Twy N southwest bound look for hold short to Rwy 31R. Apron East Cargo Ramp intersection of Rwy 04-22 and Twy D aircraft are requested to apply the minimum thrust when crossing the rwy to avoid damage due to jet blast. The following twys are not avbl for acct 59000 lbs or over: Twy A, Twy M, Twy H northwest of Twy Z and Twy E east of Rwy 04-22. Inner ramp taxilane north of Terminal A and B is clsd to acct with wingspan greater than 135'. Acft at Terminal A and B advise gnd ctl prior to push. Twy L clsd northbound. Twys L and B clsd to acct with wingspans greater than 118' exiting Rwy 31L. Twy S bwn apch end Rwy 13L and Rwy 13R-31L clsd to acct wingspan more than 100'. Twy R between apch end Rwy 13L and Twy D clsd to acct wingspan more than 100'. Twy Z clsd to acct with wingspan greater than 118'. Gnd run-up enclosure avbl 24 hrs. Terminal Gates A1, A2, A6, A7 and A8, A15 & A17 use only with PPR call ops 210-207-3433. C130 and C17 type acct must park on west ramp to clear cstms. All intl general aviation clear U.S. Cstms at North Fixed Base Operator Ramp east side, call U.S. CSTMS 210-821-6965 upon arr. Flight Notification Service (ADCUS) available.

**AIRPORT MANAGER:** 210-207-3444

**WEATHER DATA SOURCES:** ASOS (210) 805-5583 WSP.

**COMMUNICATIONS:** D-ATIS 118.9 (210-805-5515) UNICOM 122.95

RCO 122.3 (SAN ANGELO RADIO)

Ⓡ APP CON 128.05 (091-140 SAT) 125.1 (271-359 SAT) 124.45 (360-090 SAT) 118.05 (141-270 SAT) 121.375

TOWER 119.8 GND CON 121.9 CLNC DEL 126.7

Ⓡ DEP CON 128.05 (091-140 SAT) 125.1 (271-359 SAT) 124.45 (360-090 SAT) 118.05 (141-270 SAT)

CDPCL (LOGON KUSA)

PDC

**AIRSPACE:** CLASS C svc ctc APP CON.

**VOR TEST FACILITY (VOT)** 110.4

**RADIO AIDS TO NAVIGATION:** NOTAM FILE SAT.

(VH) (H) VORTACW 116.8 SAT Chan 115 N29°38.64' W98°27.68' 176° 6.6 NM to fld. 1159/8E.

VOR unusable:

018°-022° byd 40 NM

028°-032° byd 40 NM

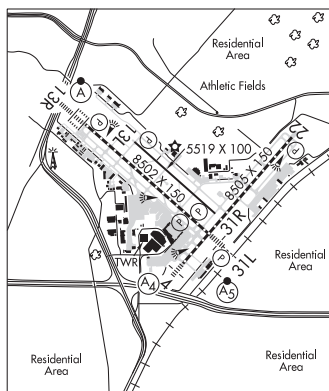
342°-347° byd 40 NM

355°-002° byd 40 NM blo 18,000'

ILS/DME 109.7 I-SAT Chan 34 Rwy 04. Class IE. Unmonitored.

ILS/DME 110.9 I-ANT Chan 46 Rwy 13R. Class IIE. DME also serves Rwy 31L.

ILS/DME 110.9 I-IZR Chan 46 Rwy 31L. Class IE. DME also serves Rwy 13R.



**SAN ANTONIO**  
**H-7B, L-19C**  
**IAP, AD**