

**TSTC WACO** (CNW)(KCNW) 8 NE UTC-6(-5DT) N31°38.27' W97°04.45'

470 B NOTAM FILE FTW MON Airport

**RWY 17L-35R:** H8600X150 (ASPH) S-50, D-200, 2S-175, 2D-450

MIRL

**RWY 17L:** MALSR. PAPI(P4R)—GA 3.0° TCH 52'.

**RWY 35R:** PAPI(P4L)—GA 3.0° TCH 41'. Trees. Rgt tfc.

**RWY 17R-35L:** H6291X75 (CONC) S-25, D-76, 2S-96, 2D-140

**RWY 17R:** Rgt tfc.

**RWY 35L:** Trees.

**SERVICE:** S2 **FUEL** 100LL, JET A **LGT** When ATCT clsd MIRL Rwy

17L-35R preset low intst; to incr intst and ACTVT MALSR Rwy 17L;

PAPI Rwy 17L and Rwy 35R—121.7.

**AIRPORT REMARKS:** Attended Mon-Fri 1200-0000Z†. Extv flt trng in arpt tfc area sfc to 3000 ft AGL. APU avbl for jet acft. Rwy 17R-35L no lights. Used primarily for, but not limited to, taxiing and helicopter ops during non-daylight hours. Rwy 17R-35L green cntrln reflectors alg full len of rwy.

**AIRPORT MANAGER:** 254-867-2280

**WEATHER DATA SOURCES:** AWOS-3PT 134.225 (254) 867-3880. LAWRS.

**COMMUNICATIONS:** CTAF 124.0 UNICOM 122.95

**WACO RCO** 122.15 (FORT WORTH RADIO)

Ⓡ **WACO APP CON** 127.65 **DEP CON** 126.125 (1200-0600Z†)

Ⓡ **FORT WORTH CENTER APP/DEP CON** 133.3 (0600-1200Z†)

**TOWER** 124.0 (1300-0500Z†) **GND CON** 121.7

**AIRSPACE:** CLASS D svc 1300-0500Z†; other times CLASS E.

**RADIO AIDS TO NAVIGATION:** NOTAM FILE ACT.

**WACO (VH) (H) VORTACW** 115.3 ACT Chan 100 N31°39.73' W97°16.14' 089° 10.1 NM to fld. 507/9E.

VOR unusable:

125°-149° byd 40 NM

149°-159° byd 47 NM

159°-187° byd 40 NM

188°-198° byd 40 NM blo 12,000'

199°-234° byd 40 NM

235°-245° byd 50 NM

246°-256° byd 40 NM blo 18,000'

246°-256° byd 52 NM

257°-267° byd 58 NM

268°-282° byd 40 NM

270°-335° byd 35 NM blo 4,000'

283°-293° byd 40 NM blo 6,000'

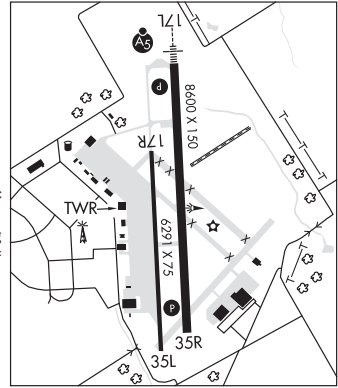
283°-293° byd 58 NM

294°-330° byd 40 NM

**ROBINSON NDB (MHW)** 400 ROB N31°30.23' W97°04.18' 355° 8.0 NM to fld. 392/3E. NOTAM FILE FTW.

**ILS** 110.7 I-CNW Rwy 17L. Unmonitored.

**ASR** (1200-0600Z†)



SAN ANTONIO

H-6H, L-19D, A

IAP, AD