

ST AUGUSTINE

NORTHEAST FLORIDA RGNL (SGJ)(KSGJ) 4 N UTC-5(-4DT) N29°57.56' W81°20.38'

JACKSONVILLE
H-8H, L-21D, 24G
IAP, AD

10 B ARFF Index—See Remarks NOTAM FILE SGJ

RWY 13-31: H8001X150 (ASPH-GRVD) S-100, D-280, 2D-560, 2D/2D2-1120 PCN 126F/AW/T HIRL CL

RWY 13: VASI(V4L)—GA 3.0° TCH 44'. Thld dspcd 1056'. Road.

RWY 31: MALSR. PAPI(P4L)—GA 3.0° TCH 54'. Thld dspcd 806'.

RWY 06-24: H2701X60 (ASPH) S-46.5, D-85 PCN 19 F/A/X/T MIRL

RWY 06: PAPI(P2L)—GA 3.25° TCH 47'. Trees.

RWY 02-20: H2609X75 (ASPH) S-100, D-203.5 PCN 53 F/A/X/T MIRL

RWY 02: Trees.

RUNWAY DECLARED DISTANCE INFORMATION

RWY 02: TORA-2610 TODA-2610 ASDA-2610 LDA-2610

RWY 06: TORA-2701 TODA-2701 ASDA-2701 LDA-2701

RWY 13: TORA-8001 TODA-8001 ASDA-7202 LDA-6144

RWY 20: TORA-2610 TODA-2610 ASDA-2610 LDA-2610

RWY 24: TORA-2701 TODA-2701 ASDA-2701 LDA-2701

RWY 31: TORA-8001 TODA-8001 ASDA-6730 LDA-5925

SERVICE: S4 FUEL 100LL, JET A OX 3, 4 LGT Actvt MALSR Rwy 31; HIRL Rwy 13-31; MIRL Rwy 06-24 & 02-20—CTAF. PAPI Rwy 06 & 31 and VASI Rwy 13 opr consly.

AIRPORT REMARKS: Attended 1100-0300Z. FICON not mntd

0200-1200Z. Aerobatic act E side of Rwy 13-31 ctc twr for tfc and GNV Radio for times. Jet single point refueling avbl. Self svc fuel avbl 24 hrs with credit card. Class I, ARFF Index A. ARFF avbl wkdays 1200-2100Z, req svc on CTAF. ARFF Index Rwy 06-24, Rwy 02-20, Rwy 12W-30W, Rwy 17W-35W, and Rwy 18W-36W CLOSED to acr ops. PPR 24 hrs for unskd acr ops with more than 30 pax seats call amgr 904-209-0090. Rwy 06/24, 02/20, 12W/30W, 17W/35W & 18W/36W not avbl for sked acr ops with more than 9 pax seats or unskd acr at least 31 pax seats. ARFF avbl Mon-Thu 1200-2100Z. User fee arprt: Intl LRA. User fee ctc U.S. CUSTOMS on arprt 904-209-0099.

AIRPORT MANAGER: 904-209-0090

WEATHER DATA SOURCES: AWOS-3PT 119.625 (904) 824-7084.

COMMUNICATIONS: CTAF 127.625 ATIS 119.625 UNICOM 122.95

ST AUGUSTINE RCO 122.3 (GAINESVILLE RADIO)

® JACKSONVILLE APP/DEP CON 120.75

ST AUGUSTINE TOWER 127.625 (1200-0200Z) GND CON 121.175

CLEARANCE DELIVERY PHONE: For CD if una to ctc on FSS freq, ctc Jacksonville Apch at 904-741-0284.

AIRSPACE: CLASS D svc 1200-0200Z; other times CLASS G.

RADIO AIDS TO NAVIGATION: NOTAM FILE SGJ.

ST AUGUSTINE (T) VORW/DME 109.4 SGJ Chan 31 N29°57.40' W81°19.81' at fld. 6/6W.

ILS/DME 111.1 I-GUH Chan 48 Rwy 31. Class IT. Glideslope unusable byd 5° either side of LOC ctrln.

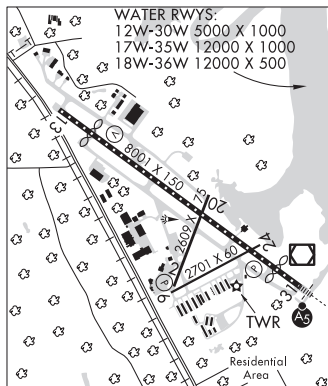
Unmonitored when ATCT clsd.

WATERWAY 17W-35W: 12000X1000 (WATER)

WATERWAY 18W-36W: 12000X500 (WATER)

WATERWAY 12W-30W: 5000X1000 (WATER)

SEAPLANE REMARKS: Waterway 12-30, 17-35, 18-36 CLOSED to air carrier ops.



ST CLOUD SPB (3FL) 1 N UTC-5(-4DT) N28°16.46' W81°17.10'

JACKSONVILLE

54 NOTAM FILE Not insp.

WATERWAY 09W-27W: 3000X200 (WATER)

AIRPORT REMARKS: Unattended. Call arprt mgr for prkg rqn.

AIRPORT MANAGER: 407-534-4712

COMMUNICATIONS: CTAF 122.9

ST GEORGE ISLAND (See APALACHICOLA on page 83)

ST PETE-CLEARWATER INTL (See ST PETERSBURG-CLEARWATER on page 167)