

## LEXINGTON

**DAVIDSON CO EXEC** (EXX)(KEXX) 3 SW UTC-5(-4DT) N35°46.87' W80°18.23'

CHARLOTTE

733 B NOTAM FILE EXX

H-9B, 12H, L-25D, 36F

**RWY 06-24:** H5004X100 (ASPH) S-17, D-60 MIRL 0.6% up SW

**RWY 06:** MALSR. PAPI(P2L)—GA 4.0° TCH 28'. Trees.

**RWY 24:** REIL. PAPI(P2L)—GA 3.0° TCH 30'. Trees.

**SERVICE:** S4 FUEL 100LL, JET A+ LGT Actvt MALSR Rwy 06; REILs Rwy 24; PAPI Rwy 06 & 24; MIRL Rwy 06-24—CTAF.

**AIRPORT REMARKS:** Attended 1300-0100Z†. For svc aft hrs call 336-847-2983. Unatndd July 4th, Thanksgiving, Christmas, New Years Day. Wildlife on and invof arpt. 100LL 24 hr self svc with credit card. Follow twy cntrln to prkg. Max ramp wt 30,000 lbs single wheel, 60,000 lbs dual wheel. Twy A fm Rwy 24 to Twy A3 has drop-off up to 60 ft 20 ft fm pavement edge.

**AIRPORT MANAGER:** 336-956-7774

**WEATHER DATA SOURCES:** AWOS-3 119.825 (336) 956-2967.

**COMMUNICATIONS:** CTAF/UNICOM 122.8

Ⓡ **GREENSBORO APP/DEP CON** 126.6

**GCO** 135.075 (GREENSBORO CLNC and FLIGHT SERVICES)

**CLEARANCE DELIVERY PHONE:** For CD ctc Greensboro Apch at 743-222-6129. for CD if una via GCO ctc Atlanta ARTCC at 770-210-7692.

**RADIO AIDS TO NAVIGATION:** NOTAM FILE GSO.

**GREENSBORO (VH) (H) VORTAC** 116.2 GSO Chan 109 N36°02.74' W79°58.58' 228° 22.5 NM to fld. 908/3W.

TACAN AZIMUTH unusable:

255°-290° byd 10 NM blo 6,000'

VOR unusable:

010°-015° byd 40 NM

072°-076° byd 40 NM

083°-093° byd 40 NM blo 6,000'

083°-093° byd 93 NM

107°-111° byd 40 NM

118°-156° byd 40 NM

157°-167° byd 40 NM blo 3,600'

157°-167° byd 48 NM

168°-180° byd 40 NM

196°-199° byd 40 NM

240°-250° byd 40 NM

260°-276° byd 40 NM

277°-288° byd 40 NM blo 3,500'

277°-288° byd 47 NM blo 6,000'

277°-288° byd 56 NM

289°-302° byd 40 NM blo 5,000'

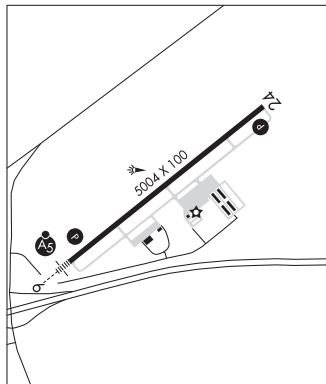
289°-302° byd 55 NM

303°-317° byd 40 NM blo 5,200'

303°-317° byd 55 NM

318°-354° byd 40 NM

**ILS/DME** 108.75 I-EXX Chan 24(Y) Rwy 06. Class IB.



## LIBERTY

**HINSHAW (GREENACRES)** (N61) 3 NE UTC-5(-4DT) N35°52.42' W79°31.65'

CHARLOTTE

750 NOTAM FILE RDU

**RWY 03-21:** 1400X100 (TURF)

**RWY 03:** Trees.

**RWY 21:** Trees.

**AIRPORT REMARKS:** Unattended. Livestock and wildlife on and invof rwy. Ultralight act on and invof arpt. 4' fence end of Rwy 3 and alg both sides of rwy in prim sfc. Pond 50' fm thr Rwy 21. Rwy 03-21 width 50' mntnd rgrly. Arpt in tfc pat of Causey Arpt (2A5), 4 miles east, CTAF 122.8.

**AIRPORT MANAGER:** 336-622-4405

**COMMUNICATIONS:** CTAF 122.9

**CLEARANCE DELIVERY PHONE:** For CD ctc Washington ARTCC at 703-771-3587.

**LIBERTY** N35°48.70' W79°36.76' NOTAM FILE RDU.

CHARLOTTE

(VL) (L) **VORTAC** 113.0 LIB Chan 77 828/3W.

H-9C, 12H, L-25E, 36F

**RCO** 122.1R 113.0T (RALEIGH RADIO)