

**CHATTANOOGA**

**LOVELL FLD** (CHA)(KCHA) P (ARNG) 5 E UTC-5(-4DT) N35°02.11' W85°12.21'

**ATLANTA**  
H-9A, 12G, L-25A  
IAP, AD

683 B LRA ARFF Index—See Remarks NOTAM FILE CHA

**RWY 02-20:** H7400X150 (ASPH-GRVD) S-120, D-164, 2S-175, 2D-265 PCN 42 F/A/X/U HIRL CL

**RWY 02:** MALSR. PAPI(P4R)—GA 3.0° TCH 71'. RVR-TR

**RWY 20:** ALSF2. TDZL. RVR-TR Railroad.

**RWY 15-33:** H575X150 (ASPH-GRVD) S-120, D-164, 2S-175, 2D-265 PCN 14 F/A/Y/U MIRL

**RWY 15:** PAPI(P4L)—GA 3.0° TCH 45'. Thld dspcd 106'. Trees.

**RWY 33:** PAPI(P4L)—GA 3.0° TCH 40'. Thld dspcd 575'. Trees.

**RUNWAY DECLARED DISTANCE INFORMATION**

**RWY 02:** TORA-7400 TODA-7400 ASDA-7100 LDA-7100

**RWY 15:** TORA-5575 TODA-5575 ASDA-5575 LDA-5470

**RWY 20:** TORA-7400 TODA-7400 ASDA-7400 LDA-7400

**RWY 33:** TORA-5470 TODA-5470 ASDA-5470 LDA-5000

**SERVICE:** S4 FUEL 100LL, JET A OX 3, 4 LGT Actvt MALSR Rwy 02;

TDZL Rwy 20; cntrln lgts Rwy 02-20; HIRL Rwy 02-20—CTAF.

MIRL Rwy 15-33 unavbl when ATCT clsd. **MILITARY—FUEL A+**

(C423-855-2299. 30 min PN rqr. ) (NC-100LL, A)

**AIRPORT REMARKS:** Attended continuously. Birds invof arpt. Tnst acft avoid scy zone w/ 300 ft of trml bldg. Hold short instr read back rqr. Class I, ARFF Index B. ARFF Index C avbl O/R. Flight Notification Service (ADCUS) available.

**AIRPORT MANAGER:** 423-855-2200

**WEATHER DATA SOURCES:** ASOS 119.85 (423) 499-5973. LLWAS.

**COMMUNICATIONS:** CTAF 118.3 ATIS 119.85 UNICOM 122.95

**CHATTANOOGA RCO 122.2 (NASHVILLE RADIO)**

Ⓡ **CHATTANOOGA APP/DEP CON 125.1 (Class C) (1100-0450Z‡)**

**ATLANTA CENTER APP/DEP CON 132.05 (0450-1100Z‡)**

**CHATTANOOGA TOWER 118.3 (1100-0450Z‡) GND CON 121.7 CLNC DEL 120.95**

**CLEARANCE DELIVERY PHONE:** For CD if una to ctc on FSS freq, ctc Chattanooga Apch at 423-855-6478, when Apch clsd ctc Atlanta ARTCC at 770-210-7692.

**AIRSPACE:** CLASS C svc ctc APP CON svc 1100-0450Z‡; other times CLASS E.

**RADIO AIDS TO NAVIGATION:** NOTAM FILE CHA.

**CHOO CHOO (H) DME 115.8 GQO Chan 105 N34°57.68' W85°09.20' 331° 5.1 NM to fld. 1014.**

DME unusable:

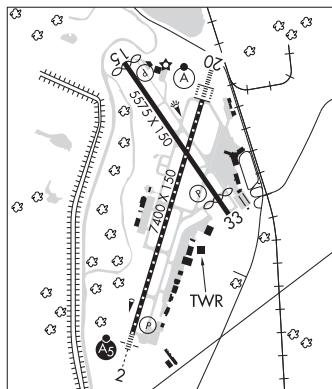
260°-290°

**DAISY NDB (HW) 341 CQN N35°09.99' W85°09.44' 198° 8.2 NM to fld. 936/2W. NDB unmonitored when ATCT closed.**

**ILS 108.3 I-CGW Rwy 02. Class IB. ILS unmntd when ATCT clsd. Glideslope unusable byd 4° left of course; byd 7° right of course.**

**ILS 109.5 I-CHA Rwy 20. Class IIE. Unmonitored when ATCT closed.**

**ASR (1100-0450Z‡)**



**CHATTANOOGA** N35°02.12' W85°12.23'  
RCO 122.2 (NASHVILLE RADIO)

**ATLANTA**  
L-25A

**CHILHOWEE** (See BENTON on page 413)