

TUSCALOOSA NTL (TCL)(KTCL) 3 NW UTC-6(-5DT) N33°13.24' W87°36.68'

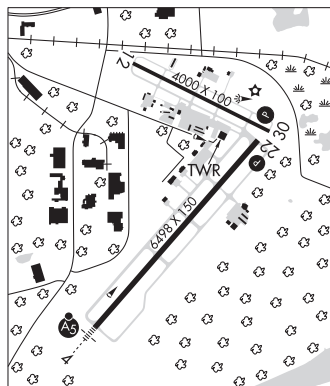
170 B ARFF Index—See Remarks NOTAM FILE TCL

RWY 04-22: H6498X150 (ASPH-GRVD) S-120, D-250, 2D-450,

2D/2D2-972 PCN 50 F/D/X/T HIRL

RWY 04: MALSR.**RWY 22:** PAPI(P4L)—GA 3.0° TCH 50'. Tree.**RWY 12-30:** H4000X100 (ASPH) S-15 PCN 50 F/C/X/T MIRL**RWY 12:** Tree.**RWY 30:** PAPI(P4R)—GA 3.0° TCH 73'. Trees.**SERVICE:** S4 **FUEL** 100LL, JET A **OX2** **LGT** When twr CLSD, ACTVT MALSR Rwy 04; PAPI Rwy 22 and Rwy 30; HIRL Rwy 04-22 med intst only; twy lgts—CTAF.**AIRPORT REMARKS:** Attended 1100-0400Z†. Birds and deer on and invof arpt. Rwy 12-30 NA when twr clsd; lgtd as a visual rwy. Class IV, ARFF Index A. Index B ARFF capability avbl H24. 24 hr PPR rqr for unskd acr opns gtr than 30 pax seats 0330-1100Z†—ctc amgr. Rwy 12-30 not avbl for sked opns with more than 9 psgr seats or unskd acr at least 31 psgr seats. Twy D clsd btdn Twy D5 and Twy D6 when twr clsd. Rwy 12-30 edge mrkgs obsc.**AIRPORT MANAGER:** 205-454-9939**WEATHER DATA SOURCES:** ASOS 132.825 (205) 750-8940.**COMMUNICATIONS:** CTAF 126.3 UNICOM 122.95**TUSCALOOSA RCO** 122.2 (ANNISTON RADIO)Ⓡ **BIRMINGHAM APP/DEP CON** 120.15**TOWER** 126.3 (1300-0200Z†) **GND CON** 121.8 **CLNC DEL** 120.775**CLEARANCE DELIVERY PHONE:** For CD when twr clsd, ctc Birmingham Apch at 205-769-3890.**AIRSPACE:** CLASS D svc 1300-0200Z†; other times CLASS G.**RADIO AIDS TO NAVIGATION:** NOTAM FILE ANB.**CRIMSON (H) TACAN** Chan 125 LDK (117.8) N33°15.53' W87°32.21' 242° 4.4 NM to fld. 365/3W.**TACAN AZIMUTH** unusable:

100°-170°

ILS/DME 109.1 I-TCL Chan 28 Rwy 04. Class IB. Unmonitored when ATCT clsd.

ATLANTA

H-6K, 9A, L-18H

IAP, AD

TUSKEGEE**MOTON FLD MUNI** (Ø6A) 3 N UTC-6(-5DT) N32°27.63' W85°40.80'

264 B NOTAM FILE ANB

RWY 13-31: H5005X100 (ASPH) S-28.5 MIRL**RWY 13:** PAPI(P2L)—GA 3.0° TCH 30'. Trees.**RWY 31:** PAPI(P2L)—GA 3.0° TCH 30'. Trees.**SERVICE:** **FUEL** 100LL, JET A+ **LGT** Actvt MIRL Rwy 13-31—CTAF.

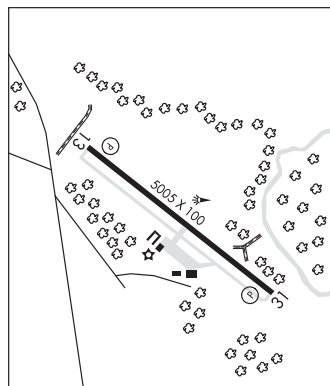
Parl twy lgtd full len. Rwy 13 and Rwy 31 PAPI OTS.

AIRPORT REMARKS: Attended 1300-2300Z†. Aft hrs—334-421-4266.

Parachute Jumping. Wildlife on and invof arpt.

AIRPORT MANAGER: 334-724-0208**COMMUNICATIONS:** CTAF/UNICOM 122.8Ⓡ **ATLANTA APP/DEP CON** 125.5 126.55 (1115-0400Z†)**CLNC DEL** 134.25**ATLANTA CENTER APP/DEP CON** 120.45 (0400-1115Z†)**CLEARANCE DELIVERY PHONE:** For CD ctc Atlanta Apch at 678-364-6132, when Apch clsd ctc Atlanta ARTCC at 770-210-7692.**RADIO AIDS TO NAVIGATION:** NOTAM FILE ANB.**TUSKEGEE (L) DME** 117.3 TGE Chan 120 N32°29.09'

W85°40.16' 200° 1.6 NM to fld. 488.



ATLANTA

H-9A, 12F, L-18I

IAP