

MISSION BAY N32°46.93' W117°13.53' NOTAM FILE SAN.

(VH) (H) **VORTACW** 117.8 MZB Chan 125 050° 4.8 NM to Montgomery-Gibbs Exec. 10/15E.

LOS ANGELES

H-41, L-4H

VOR unusable:

026°-088° byd 40 NM
 090°-100° byd 28 NM
 100°-130° byd 17 NM
 130°-190° byd 14 NM
 190°-219° byd 20 NM
 215°-241° byd 40 NM
 242°-252° byd 40 NM blo 8,000'
 242°-252° byd 55 NM blo 18,000'
 253°-288° byd 40 NM
 289°-299° byd 40 NM blo 4,500'
 289°-299° byd 49 NM
 300°-333° byd 40 NM
 308°-350° byd 20 NM blo 8,000'
 347°-351° byd 40 NM
 352°-002° byd 40 NM blo 7,000'
 352°-002° byd 52 NM

TACAN AZIMUTH unusable:

310°-350° byd 15 NM blo 6,000'
 310°-350° byd 30 NM blo 10,000'

DME unusable:

310°-350° byd 20 NM blo 6,000'
 310°-350° byd 30 NM blo 10,000'

MODESTO CITY-COUNTY-HARRY SHAM FLD (MOD)(KMOD) 2 SE UTC-8(-7DT) N37°37.55'

SAN FRANCISCO

W120°57.27'

99 B NOTAM FILE MOD

H-3B, L-2F, 3B

IAP, AD

RWY 10L-28R: H5904X150 (ASPH-GRVD) S-60, D-200, 2S-175,
 2D-400 PCN 38 F/C/X/T HIRL 0.3% up W

RWY 10L: REIL. VASI(V4L)—GA 3.0° TCH 50'. Tree.

RWY 28R: MALSR. Road. Rgt tfc.

RWY 10R-28L: H3464X100 (ASPH) S-30 PCN 8 F/C/X/T MIRL
 0.4% up W

RWY 10R: PAPI(P2L)—GA 3.5° TCH 40'. Tree. Rgt tfc.

RWY 28L: PAPI(P2L)—GA 3.0° TCH 29'. Tree.

RUNWAY DECLARED DISTANCE INFORMATION

RWY 10L:TORA-5904 TODA-5904 ASDA-5904 LDA-5904

RWY 10R:TORA-3464 TODA-3464 ASDA-3464 LDA-3464

RWY 28L:TORA-3464 TODA-3464 ASDA-3464 LDA-3464

RWY 28R:TORA-5904 TODA-5904 ASDA-5904 LDA-5904

SERVICE: S4 FUEL 100LL, JET A, A1+ OX 1, 2 LGT When twr clsd,
 ACTIVATE MALSR Rwy 28R, REIL Rwy 10L, HIRL Rwy
 10L-28R—CTAF. PAPI Rwy 10R and Rwy 28L and MIRL Rwy
 10R-28L unavailable when twr clsd.

NOISE: For NS ABTMT turbojets discontinue ops 0800-1300Z† and park
 on NE ramp. NS ABTMT procedures, pilots are reqd to use lgt d rwy only.

AIRPORT REMARKS: Attended Mon-Fri 1600-0030Z†. Rwy 10R-28L CLOSED to acct over 12,500 lbs GWT. Birds and small
 mammals on and in/ov arpt. Ponding along north edge of Twy B dur and after wet wx. PPR 72 hrs for air carrier ops with
 more than 30 pax seats 1600-0100Z† wkdays call arpt mgr 209-577-5318. All pure jet and large acct ltd to parking
 and svc at NE ramp only. Rwy 10R-28L not certificated in accordance with FAR-139. Overgrt tiedown fee.

AIRPORT MANAGER: 209-577-5318

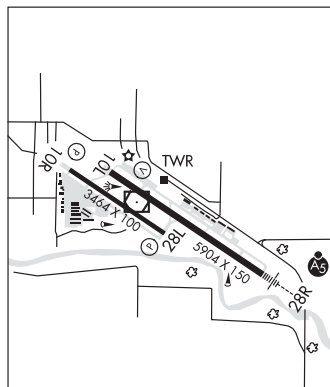
WEATHER DATA SOURCES: ASOS 127.7 (209) 572-0914. ASOS oper 0500-1500Z†. LAWRS (1500-0500Z†).

COMMUNICATIONS: CTAF 125.3 ATIS 127.7 UNICOM 122.95

RCO 122.1R 114.6T (RANCHO MURIETA RADIO)

TOWER 125.3 (1500-0500Z†) GND CON 121.7

CLEARANCE DELIVERY PHONE: For CD when ATCT clsd ctc NorCal Apch at 916-361-0516.



CONTINUED ON NEXT PAGE

CONTINUED FROM PRECEDING PAGE

AIRSPACE: CLASS D svc 1500-0500Z†; other times CLASS G.

RADIO AIDS TO NAVIGATION: NOTAM FILE MOD.

(VH) (DH) VOR/DME 114.6 MOD Chan 93 N37°37.64' W120°57.47' at fld. 93/17E.

Aerobatic acft wi an area defined as .5 NM rds of MOD 032028 (7.5 NM SW 022), blo 4800', avoidance advised dly SR-SS

VOR unusable:

- 005°-009° byd 40 NM
- 028°-083° byd 40 NM
- 092°-097° byd 40 NM
- 112°-121° byd 40 NM
- 130°-145° byd 40 NM blo 4,000'
- 130°-145° byd 62 NM
- 146°-156° byd 40 NM
- 170°-185° byd 40 NM
- 186°-196° byd 40 NM blo 5,000'
- 186°-196° byd 49 NM
- 197°-338° byd 40 NM

ILS 111.9 I-MOD Rwy 28R. Class IA. Unmonitored when ATCT closed. Autocoupled approaches NA blo 1,080' MSL (2.8 NM fm thld).

COMM/NAV/WEATHER REMARKS: Aviation wx avbl when twr opr, call 209-526-4555.

MOFFETT FEDERAL AIRFIELD (See MOUNTAIN VIEW on page 212)

MOJAVE AIR & SPACE PORT/RUTAN FLD (MHV)(KMHV) 1 E UTC-8(-7DT) N35°03.54'

LOS ANGELES

W118°09.04'

H-4I, L-3D, 7-C

2801 B TPA—See Remarks NOTAM FILE MHV

IAP, AD

RWY 12-30: H12503X200 (ASPH) S-120, D-150, 2D-450 HIRL

RWY 12: REIL. PAPI(P4L)—GA 3.5° TCH 82'. Thld dsplcd 600'. 1.0% down.

RWY 30: REIL. PAPI(P4L)—GA 3.0° TCH 62'. Thld dsplcd 900'. Rgt tfc. 1.0% up.

RWY 08-26: H7049X100 (ASPH) S-40, D-60, 2D-88 MIRL 0.6% up W

RWY 08: PAPI(P2L)—GA 4.0° TCH 55'.

RWY 26: PAPI(P2L)—GA 3.0° TCH 52'. Rgt tfc.

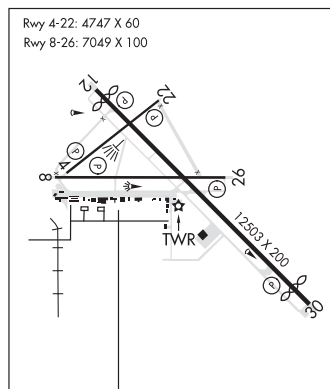
RWY 04-22: H4747X60 (ASPH) S-40, D-60, 2D-60 MIRL

RWY 04: PAPI(P2L)—GA 4.0° TCH 39'. Pole.

RWY 22: PAPI(P2L)—GA 3.0° TCH 40'. Rgt tfc.

SERVICE: S4 FUEL 100LL, JET A, A+ LGT Actvt REIL Rwys 12 and 30; MIRL Rwys 08-26 and 04-22; HIRL Rwy 12-30—CTAF. Rwy 12 PAPI unusbl byd 2.5 nm.

AIRPORT REMARKS: Attended continuously. 100LL and A+ fuel avbl 1500-0100Z†, Mon-Sat. Otr times ctc arpt security on CTAF or call 661-824-2434; fee charged. Be alert to high speed activity invof arpt. Fee charged. TPA—CAT C/D and all turbojet acft TPA 4301' MSL (1500' AGL); CAT A/B acft TPA 3801' MSL (1000' AGL). Helicopter TPA 3301' MSL (500' AGL) and use south entry and departure. Twy F is clsd west of Twy A. Due to rapidly rising terrain west and northwest of the arpt CAT/C/D and all turbojet acft ldg Rwy 08 must remain at or above 4301' MSL until commencing base leg turn and at or above 3800' MSL until established on A 2.25 NM final. Rwy 08-26 300' paved overrun east of rwy; 300' paved overrun west end of rwy.



AIRPORT MANAGER: 661-824-2433

WEATHER DATA SOURCES: AWOS-3 132.225 (661) 824-5218. SAWRS.

COMMUNICATIONS: CTAF 127.6

JOSHUA APP/DEP CON 133.65

TOWER 127.6 (1500-0100Z† Mon-Fri) GND CON 123.9

AIRSPACE: CLASS D svc 1500-0100Z† Mon-Fri; other times CLASS G.

RADIO AIDS TO NAVIGATION: NOTAM FILE EDW.

EDWARDS (T) (T) VORTACW 116.4 EDW Chan 111 N34°58.94' W117°43.96' 271° 21.1 NM to fld. 2378/12E.

TACAN AZIMUTH unusable:

098°-158° byd 19 NM blo 7,900'

DME unusable:

107°-158° byd 19 NM

VOR unusable:

098°-158° byd 19 NM blo 7,900'